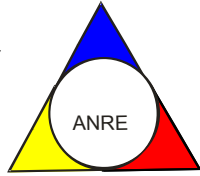




ROMANIAN ENERGY REGULATORY AUTHORITY
ELECTRICITY MARKET DEPARTMENT



REPORT ON MONITORING RESULTS OF THE
ELECTRICITY MARKET
NOVEMBER 2008

- This document represents an unauthorised translation of the Romanian document -

ANRE makes all the necessary efforts to present within the hereabove mentioned document, as accurately and concisely as possible, the data based on the legal entities reports. This document published by **ANRE** is for information purpose only. **ANRE** is not and will not be under any circumstances legal responsible for any inadvertences regarding the information presented within the document or for the improper way the information is used

TABLE OF CONTENTS

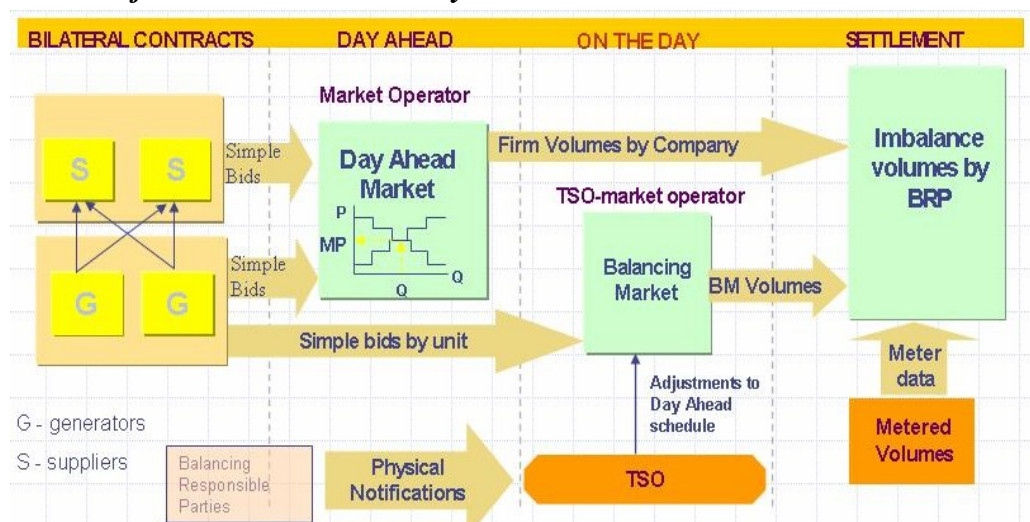
<u>I.MAIN EVENTS IN THE DEVELOPMENT OF THE ROMANIAN ELECTRICITY MARKET</u>	<u>3</u>
<u>II.WHOLESALE ELECTRICITY MARKET</u>	<u>3</u>
<u>1.Structure of the wholesale electricity market</u>	<u>3</u>
<u>2.Participants on the wholesale electricity market</u>	<u>4</u>
<u>3.Generation structure of National Energy System on resources types</u>	<u>5</u>
<u>4.Transactions' structure on the wholesale electricity market</u>	<u>6</u>
<u>5.Trading structure on the wholesale electricity market of different participant categories</u>	<u>10</u>
<u>Generators</u>	<u>10</u>
<u>Suppliers</u>	<u>11</u>
<u>Main distribution operators</u>	<u>13</u>
<u>6.Concentration indicators on the wholesale electricity market and its components</u>	<u>13</u>
<u>7.Price evolution on wholesale electricity market</u>	<u>15</u>
<u>III.RETAIL ELECTRICITY MARKET</u>	<u>19</u>
<u>1. Structure of the retail electricity market</u>	<u>19</u>
<u>2.Steps in the opening process of the electricity market</u>	<u>19</u>
<u>3.Electricity market opening degree</u>	<u>19</u>
<u>4.Market shares of the electricity suppliers</u>	<u>20</u>
<u>5.Concentration indicators of the competitive retail electricity market</u>	<u>21</u>
<u>6.Evolution of consumers' number and of the electricity delivered</u>	<u>22</u>
<u>IV.TRANSMISSION AND SYSTEM OPERATOR C.N. TRANSELECTRICA S.A.</u>	<u>25</u>
<u>V.EVOLUTION OF MARKET RULES IN NOVEMBER 2008</u>	<u>26</u>
<u>VI.EXPLANATIONS AND ABBREVIATION</u>	<u>26</u>

I. MAIN EVENTS IN THE DEVELOPMENT OF THE ROMANIAN ELECTRICITY MARKET

- **GD 365/1998** – vertically integrated monopol – RENEL – was split in. Separated distribution and supply companies (SC Electrica SA) and generation companies (SC Termoelectrica SA and SC Hidroelectrica SA) were established within a new company - CONEL SA. Two other electricity generators (SN Nuclearelectrica SA and RAAN) were separately established;
- transmission, system services and market administration were separately organised, within CONEL SA;
- the relationships between parties within the electricity sector were settled based on contracts;
- **GD 122/2000** – electricity market opens at 10%;
- **GD 627/2000** – CONEL holding is dissolved;
- **September 2000** – launch of the compulsory electricity spot market in Romania, administrated by OPCOM and organized based on pool model;
- **GD 1342/2001** – SC Electrica SA splits in 8 subsidiaries for electricity distribution and supply;
- **GD 1524/2002** – SC Termoelectrica SA reorganizes in several separate legal entities for generation;
- **July 2005** – launch of the new market model, based on:
 - voluntary spot market, with both sides offers and bilateral settlement;
 - compulsory balancing market, with TSO as single counterparty;
 - financial responsibilities of the balancing are allocated to the BRP;
- **GD 644/2005** – electricity market opens at 83.5%;
- **November 2005** – launch of the green certificates market;
- **December 2005** – launch of the centralized market for bilateral contracts;
- **March 2007** – launch of the centralized market for partially standardized bilateral contracts with continuous negotiation;
- **GD 638/2007** – fully opening of electricity and gas markets;
- **July 2007** – rules for capacity market have been established.
- **July 2008** – launch of the mechanism of direct debit and guarantee for electricity transactions on the day-ahead market (OPCOM as central counterparty).

II. WHOLESALE ELECTRICITY MARKET

1. Structure of the wholesale electricity market



2. Participants on the wholesale electricity market

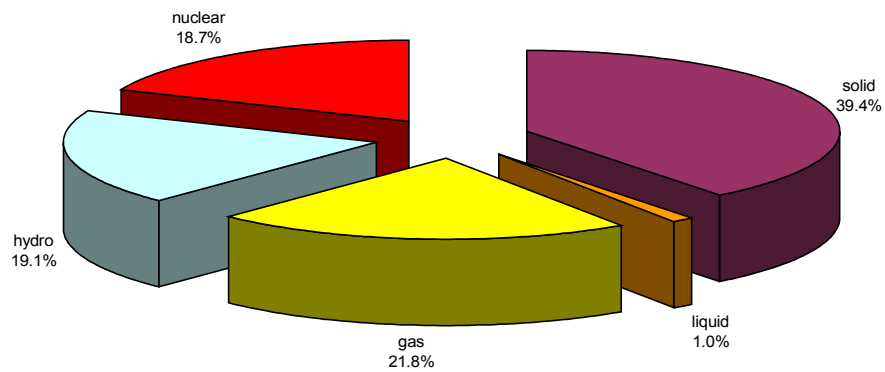
The market participants* in November 2008 are presented below split into categories:

No.	Name	Comments
A Electricity generators operating dispatching units		
1	SC CET Bacău SA	
2	SC CET Braşov SA	
3	SC CET Govora SA	
4	SC CET Iaşi SA	
5	SC CET Oradea SA	
6	SC Electrocentrale Bucureşti SA	
7	SC Electrocentrale Galaţi SA	
8	SC Dalkia Termo Prahova SRL	
9	SNP Petrom Sucursala Petrobrazi	
10	SC Termica SA Suceava	
11	SC Termoelectrica SA	
12	SC Termoficare 2000 SA Piteşti	
13	SC Termon Oneşti SA	
14	SC Uzina Termică Giurgiu SA	
15	SN Nuclearelectrica SA	
16	SC CE Rovinari SA	
17	SC CE Turceni SA	
18	SC CE Craiova SA	
19	SC CET Arad SA	
20	SC Electrocentrale Deva SA	
21	SC Hidroelectrica SA	
22	RAAN	
B Transmission System Operator		
1	CN TRANSELECTRICA SA	Balancing Market Operator
C DAM Operator		
1	SC OPCOM SA	Operator of the Green Certificates Market, Bilateral Contracts Market and Settlement Administrator
D Distribution network operators		
1	SC CEZ Distribuţie SA	
2	SC ENEL Distribuţie Banat SA	
3	SC ENEL Distribuţie Dobrogea SA	
4	SC E.ON Moldova Distribuţie SA	
5	SC ENEL Distribuţie Muntenia SA	
6	SC FDEE Electrica Distribuţie Muntenia Nord SA	
7	SC FDEE Electrica Distribuţie Transilvania Sud SA	
8	SC FDEE Electrica Distribuţie Transilvania Nord SA	
E Incumbent suppliers		
1	SC CEZ Vanzare SA	
2	SC ENEL Energie SA	
3	SC E.ON Moldova Furnizare SA	
4	SC ENEL Energie Muntenia SA	
5	SC FFEE Electrica Furnizare Muntenia Nord SA	
6	SC FFEE Electrica Furnizare Transilvania Sud SA	
7	SC FFEE Electrica Furnizare Transilvania Nord SA	
F Electricity Suppliers acting exclusively on the wholesale market		
1	SC Atel Energy Romania SRL	
2	SC CEZ Trade Romania SRL	
3	SC EFT Romania SRL	
4	SC Electrabel Romania SRL	
5	SC Encaz SRL	
6	SC Energy Market Consulting SRL	
7	SC E.ON Energy Trading AG	
8	SC Ezpada SRL	
9	SC Grivco SA	
10	SC Inteltra SRL	
11	SC Jas Budapest Zrt	
12	SC Korlea Invest SRL	
13	SC Re Energie SRL	
14	SC Romelectro SA	
15	SC Rudnap SRL	
16	SC RBS Sempra Energy Europe Ltd	
17	SC Statkraft Romania SRL	
G Electricity Suppliers		
1	SC Alro SA	
2	SC Also Energ SA	
3	SC Arelco Distribuţie SRL	
4	SC Beny Alex SRL	
5	SC Biol Energy SRL	
6	SC Buzmann Industries SRL	
7	SC EFE Energy SRL	
8	SC EGL Gas & Power Romania SA	
9	SC Ehol Distribution SRL	
10	SC Elcomex EN SRL	
11	SC Electrica SA	
12	SC Electricom SA	
13	SC Electromagnetica SA	
14	SC Energy Holding SRL	
15	SC Energy Network SRL	
16	SC Enex SRL	
17	SC Ennet Grup SRL	
18	SC Enol Grup SA	
19	SC EURO-PEC SA	
20	SC Fidelis Energy SRL	
21	SC General Com Invest SRL	
22	SC Gevco SRL	
23	SC Green Energy SRL	
24	SC Hidroconstructia SA	
25	SC ICCO Electric SRL	
26	SC ICPE Electrocond Technologies SA	
27	SC Interagro SA	
28	SC Luxten LC SA	
29	SC Petprod SRL	
30	SC Tinmar Ind SA	
31	SC Total Electric Oltenia SA	
32	SC Transenergo Com SA	
33	SC UCM Energy SRL	

*) The electricity market participants report to ANRE technical/commercial data according to the *Methodology of wholesale electricity market monitoring for assessing the competition level on market and preventing the abuse of dominant position*, approved by ANRE Order no. 35/2006. The table does not include the Balancing Responsible Parties (BRP). The BRP updated list is published on the Balancing Market Operator website - www.ope.ro.

3. Generation structure of National Energy System on resources types

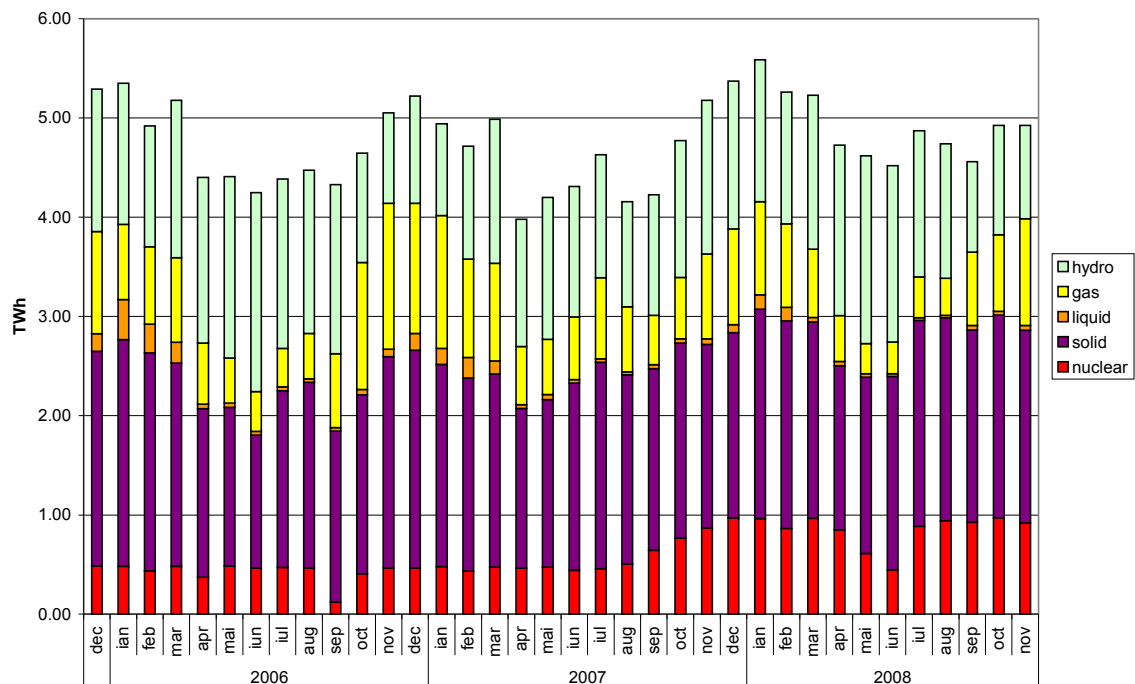
Electricity structure by primary sources (delivered by generators with dispatchable units)
November 2008



Source: Monthly reports of generators – processed by MG

The evolution of delivered electricity structure, starting with December 2005, is the following:

Evolution of electricity delivered by generators with dispatchable units by primary sources



Source: Monthly reports of generators – processed by MG

The following table presents the main data regarding the physical balance of electricity for November 2008 and January- November 2008, compared with data for similar period of time of 2007:

No.	Indicator	UM	November 2007	November 2008	%	Jan-Nov 2007	Jan-Nov 2008	%
0	1	2	3	4	$5=4/3*100$	6	7	$8=7/6*100$
1	Generated electricity	TWh	5.66	5.38	95.10	54.64	58.44	106.96
2	Delivered electricity	TWh	5.18	4.92	95.12	50.08	53.95*	107.72
3	Import	TWh	0.04	0.07	176.90	1.23	0.80	64.75
4	Export	TWh	0.37	0.41	112.76	2.98	4.85	162.84
5	Internal consumption	TWh	4.85	4.58	94.45	48.33	49.89	103.22
6	Electricity supplied on the regulated market	TWh	1.92**	1.96	102.1	20.52**	21.26	103.6
6.1	<i>Of which electricity supplied to households</i>	<i>TWh</i>	<i>0.80</i>	<i>0.91</i>	<i>113.8</i>	<i>8.67</i>	<i>9.38</i>	<i>108.2</i>
7	Electricity supplied on the competitive market	TWh	1.98	174	0.88	20.41	20.89	102.4
8	Transmission – Injection component	TWh	5.10	485	95.00	49.70	53.05	106.73
9	Transmission – Extraction component	TWh	5.14	490	95.40	50.03	53.75	107.44
10	System services	TWh	5.14	490	95.40	50.37	53.75	106.71
11	Actual transmission grid losses	TWh	0.08	008	96.56	0.81	0.91	111.82
12	Heat generated for delivery	Tcal	2484.57	2090.99	84.16	16053.54	15994.86	99.63
13	Heat in co-generation	Tcal	1941.02	1827.79	94.17	12970.21	13095.98	100.97

Note: 1. Data shown in the table neither include the energy produced by the generators who do not own dispatchable units (positions 1 & 2) nor the energy delivered to the consumers directly connected to the power plants (positions 6 & 7).

2. The imported/exported quantities do not comprise the unscheduled crossborder exchange with neighbor countries for ensuring the balance of the national energy system.

3. The electricity considered for transmission tariff – injection component include neither the electricity sold by generators for covering the transmission losses nor the electricity imported by competitive suppliers and used for the same purpose by Transelectrica, due to the exceptions applied for G payment obligations.

*The values of delivered electricity for July-October 2008 were modified corresponding to some metering corrections made by SC Electrocentrale Bucuresti SA.

**Because of several corrections made by E.ON Moldova in November and December 2007 reports (due to errors which occurred in their database system) the consumers consumption on regulated market for the analyzed time period of 2007 was recalculated.

4. Transactions' structure on the wholesale electricity market

The size of wholesale market depends on the sum of all transactions performed by the market players, exceeding the quantities physically transmitted from generation to consumption; the total transactions include also resale transactions made in order to match the contractual obligations and to obtain financial benefit.

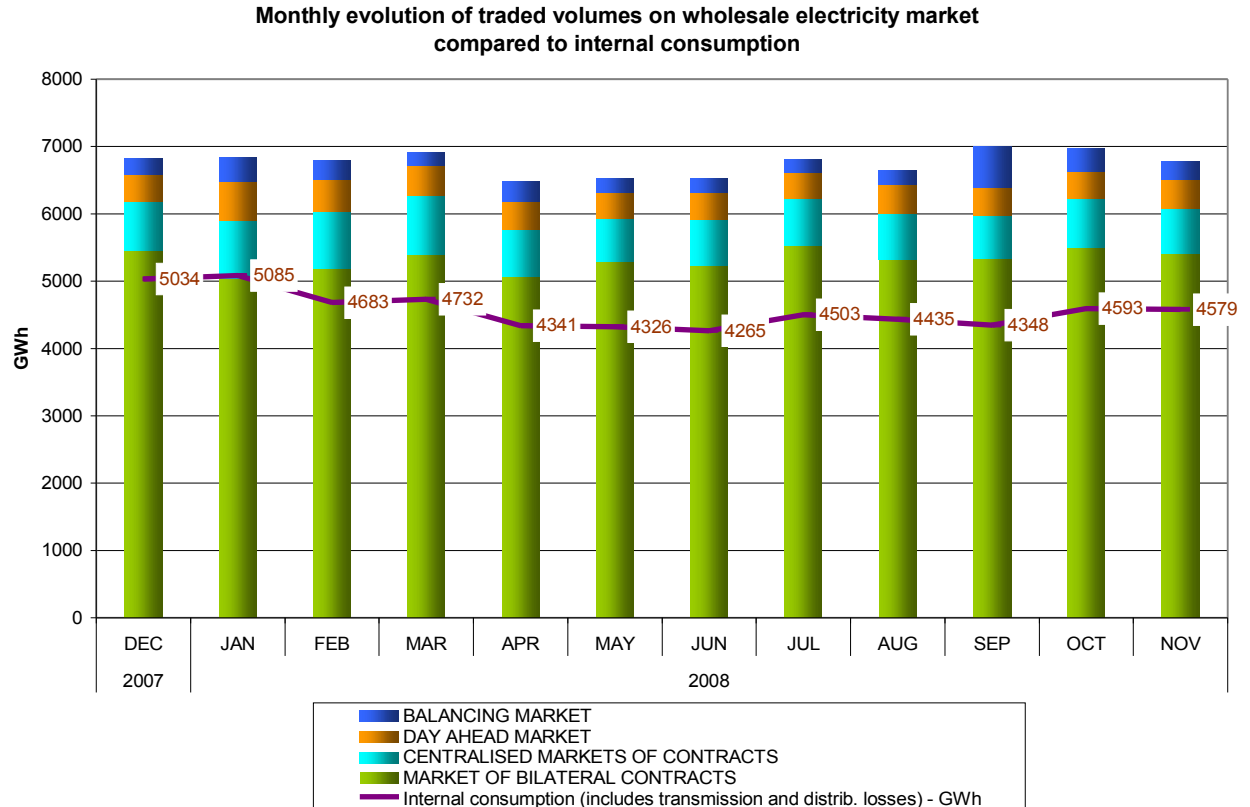
Therefore, the wholesale electricity market includes: regulated contracts and bilateral negotiated contracts between generators and suppliers, regulated contracts for covering the network losses, bilateral negotiated contracts generator-generator and supplier-supplier, as well as contracts concluded on centralized markets: CMBC (centralized market of bilateral contracts), CMBC-CN (centralized market of partially standardised bilateral contracts, with continuous negotiation) and on the Power floor of RCE (Romanian Commodities Exchange), transactions on DAM (day-ahead market) and on BM (Balancing Market).

The volumes traded on each type of contracts and on the main components of the wholesale market are presented in the table below for November 2008 compared to the volumes of November 2007:

TRANSACTIONS ON THE WHOLESALE MARKET	UM	November 2007	November 2008
0	1	2	3
1. BILATERAL CONTRACTS' MARKET	GWh	5769	5830
1.1. Sales on regulated contracts	GWh	2685	2629
1.2. Sales on negotiated contracts *	GWh	2717	2786
1.3. Export	GWh	367	414
2. CONTRACTS ON CENTRALISED MARKETS	GWh	671	658
3. DAY AHEAD MARKET	GWh	395	425
4. BALANCING MARKET (all the transactions)	GWh	292	282
4.1. Upward	GWh	171	203
4.2. Downward	GWh	121	79
INTERNAL CONSUMPTION (includes distribution and transmission losses)	GWh	4848	4579

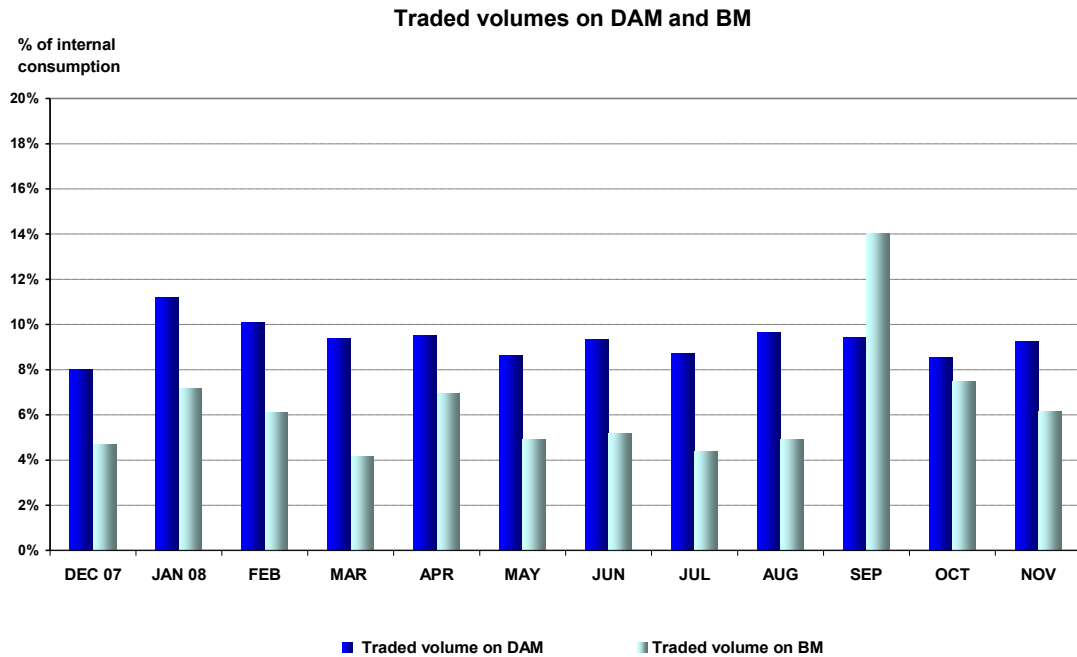
* sales to final consumers are not included

The evolution of the relation between the volumes sold on each market and the estimated internal consumption, for December 2007 – November 2008, is presented below:



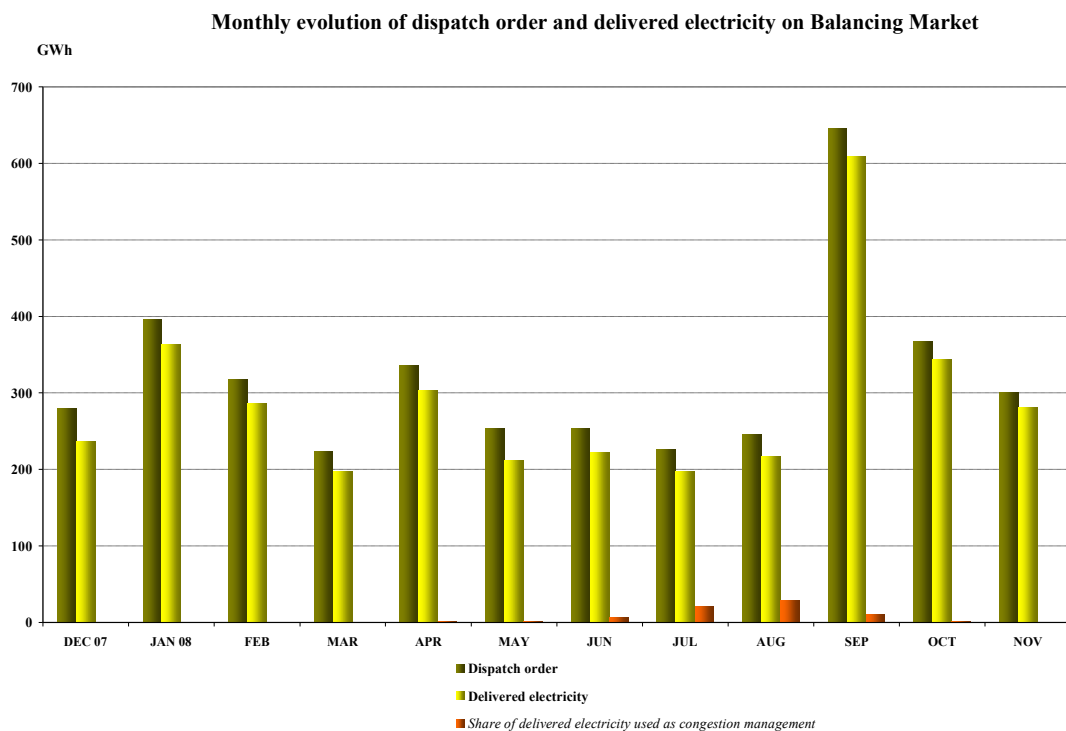
Source: Monthly reports of wholesale market participants, SC Opcom SA and CN Transelectrica SA – processed by MG

The following graph presents the evolution on 12 month-period of volumes traded on DAM, compared to volumes traded on BM (expressed as percentages from the internal consumption) in order to evaluate the relationship between those two types of traded volumes.



Source: Monthly reports of SC Opcom SA and CN Transelectrica SA – processed by MG

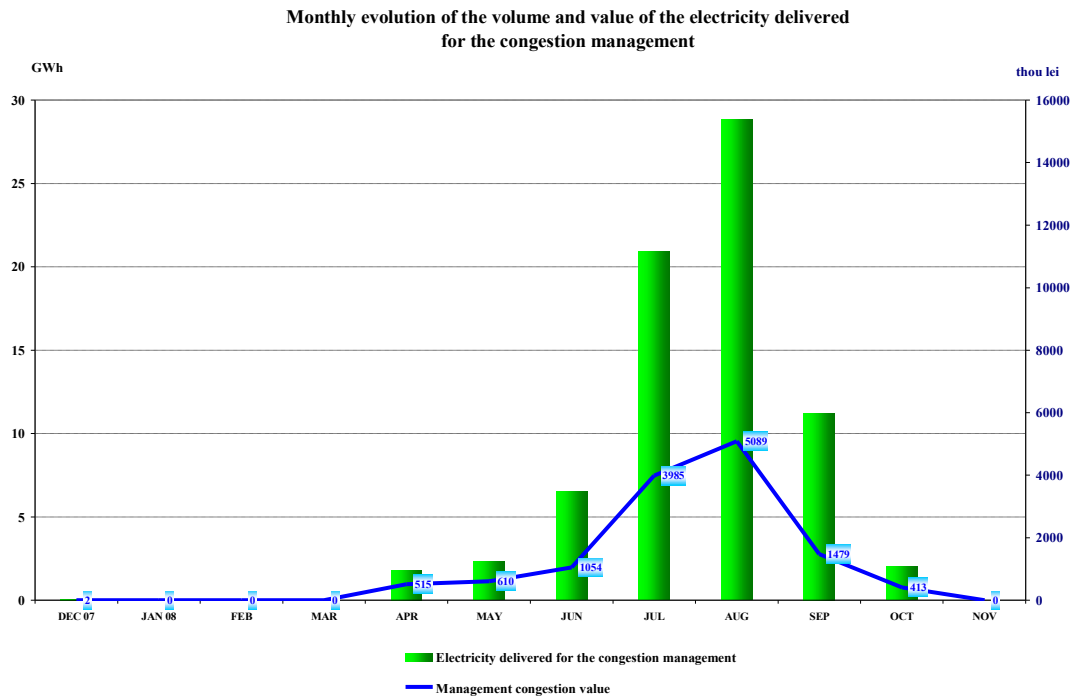
Balancing electricity is determined by the dispatch orders (accepted offers) received by generators. After settlement, the actual electricity delivered by generators on the balancing market is determined based on the measured (approved) values; the relation between the accepted and delivered electricity during December 2007 – November 2008 is presented in the following graph:



Source: Monthly reports of CN Transelectrica SA – processed by MG

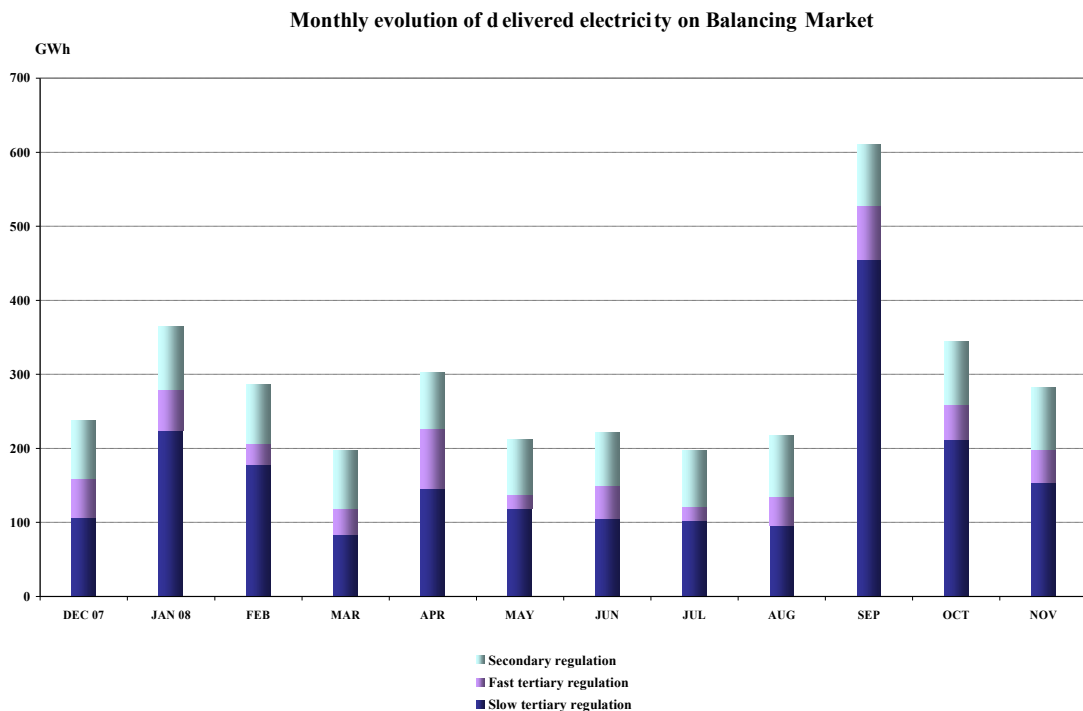
The above graph also presents the energy used for congestion management compared to the volumes traded on BM; this energy represents the quantity purchased by the transmission operator on the balancing market in order to solve the congestions appeared in the transmission network.

The following graph presents the monthly evolution and the values of transactions made by CN Transelectrica SA for the electricity used for congestion management, starting with December 2007.



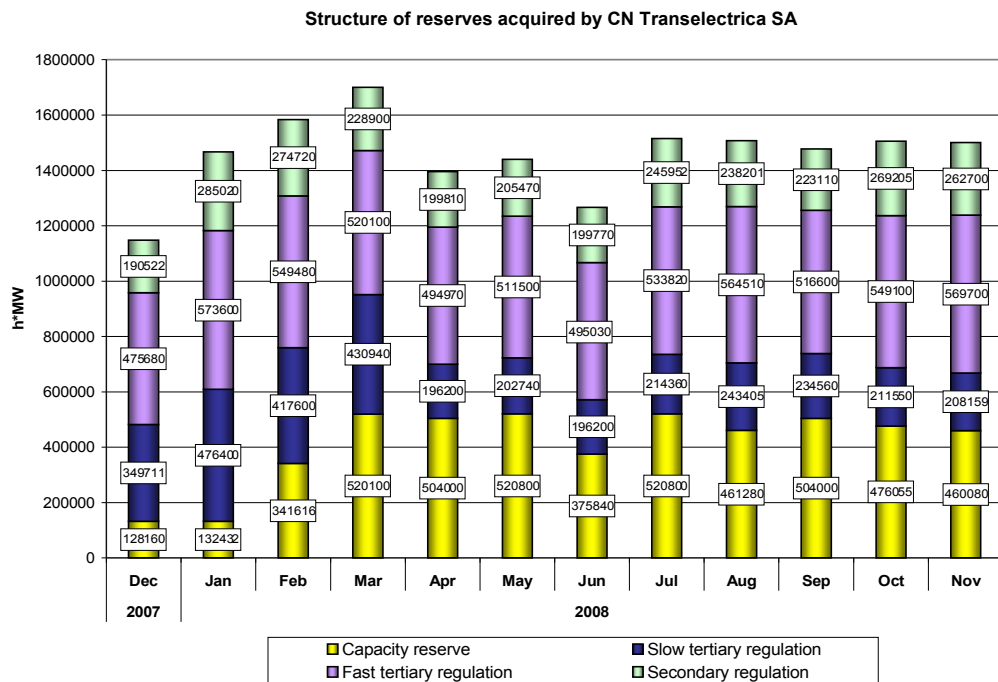
Source: Monthly reports of CN Transelectrica SA – processed by MG

The structure of balancing electricity delivered in the system on each type of regulation for the period December 2007 – November 2008 is presented in the graph below:



Source: Monthly reports of CN Transelectrica SA – processed by MG

For comparison, the following graph presents the evolution of reserves (ancillary services, i.e. obligations of generators to maintain their contracted capacities available for dispatching/offering on BM) acquired/paid by CN Transelectrica SA during December 2007- November 2008:



Source: Monthly reports of CN Transelectrica SA – processed by MG

5. Trading structure on the wholesale electricity market of different participant categories

Generators

In November 2008, the structure of electricity sales obligations contracted before delivery day by the electricity generators with dispatchable units was the following:

Transaction type	MU	November 2007	November 2008
0	1	2	3
Regulated to incumbents, thermal generators	GWh	1158.09	1232.85
Regulated to incumbents, hydro generator	GWh	160.75	167.74
Regulated to incumbents, nuclear generator	GWh	576.76	489.87
Regulated for distribution losses, thermal generators	GWh	472.75	308.92
Regulated for distribution losses, hydro generator	GWh	72.42	60.48
Regulated for distribution losses, nuclear generator	GWh	115.97	143.39
Regulated for transmission losses, thermal generator	GWh	39.80	82.97
Regulated, to other generators (with the obligation of return, within a year)	GWh	44.86	142.86
Regulated to other generators, activated on request, with option premium	GWh	0.00	0.00
Negotiated, to incumbents	GWh	38.16	19.20

Negotiated, to distributors	GWh	0.00	0.00
Negotiated. to other generators	GWh	78.20	282.81
Negotiated, to competitive suppliers	GWh	1399.68	1132.21
Contracts concluded on centralized markets (CMBC, CMBC-NC, RCE)	GWh	613.18	658.20
Supply to consumers (negotiated + auction on centralized markets)	GWh	222.86	255.99
Export	GWh	124.40	124.98
DAM	GWh	210.48	147.77
Total	GWh	5328.34	5250.23

Source: Monthly reports of generators – processed by MG

Suppliers

In November 2008, 57 companies having as main activity the supply of electricity concluded transactions on the electricity market; 17 suppliers out of 57 traded electricity exclusively on the wholesale market (WEM) and 40 suppliers traded electricity on the retail market as well (REM), including the 7 incumbent suppliers trading electricity both on competitive and regulated markets.

Suppliers acting exclusively on WEM

The following table shows the activity for November 2008 compared to November 2007 of the suppliers acting exclusively on WEM, acquisitions and sales being split by categories of markets/participants:

- GWh -

Transactions' structure of suppliers acting exclusively on WEM	November 2007	November 2008
Acquisitions		
Import	31.48	28.93
Negotiated contracts with suppliers	388.05	545.14
Negotiated contracts with generators	207.37	244.49
Contracts concluded on centralized markets	112.04	187.72
DAM	14.06	53.48
Sales		
Export	166.88	279.36
Negotiated contracts with suppliers	497.70	619.80
Negotiated contracts with generators	25.20	31.20
Contracts concluded on centralized markets	-	-
DAM	20.21	128.24

Active suppliers on REM (the incumbent suppliers are not included)

The following table presents aggregated information on acquisitions volume and structure for suppliers providing electricity to final consumers, on the competitive market, for November 2008 and November 2007.

- GWh -

Acquisition structure of suppliers providing electricity to final consumers (the incumbent suppliers are not included)	November 2007	November 2008
Import	36.83	-
Negotiated contracts with suppliers	585.38	599.46
Negotiated contracts with generators	1192.48	887.65
Contracts concluded on centralized markets	377.54	419.43
DAM	105.19	53.67

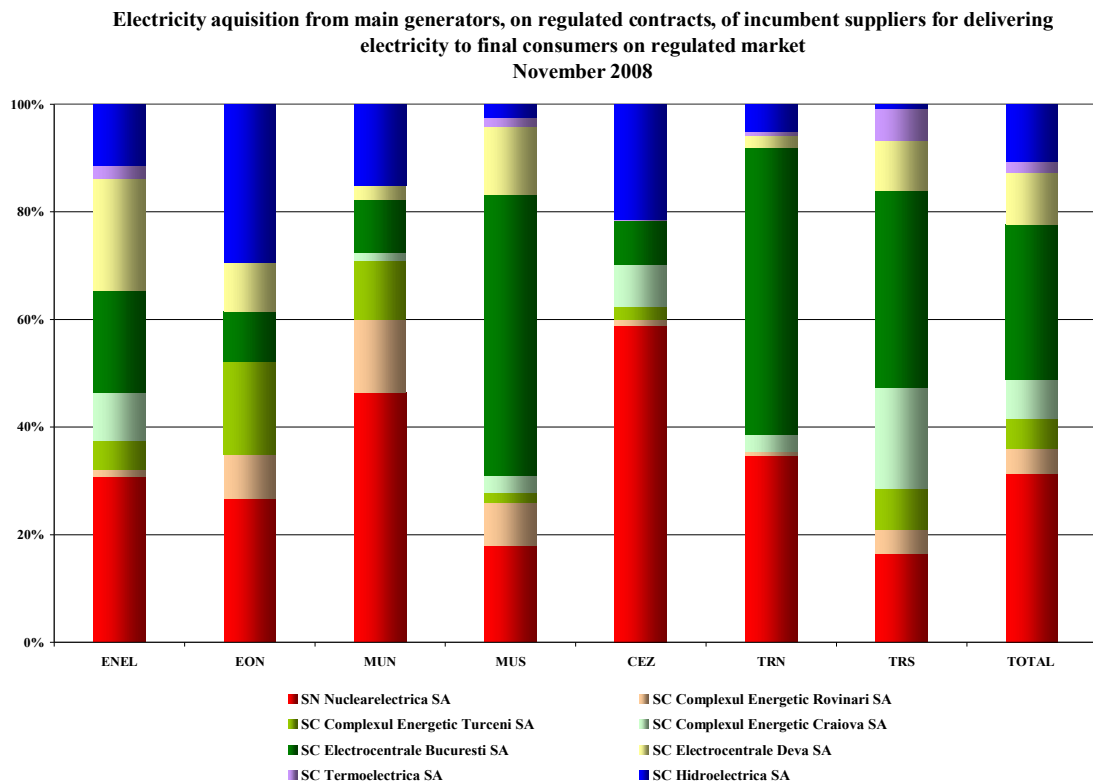
Incumbent suppliers

Electricity acquisition structure of incumbent suppliers (before the delivery day), for supplying the regulated market consumers, is presented in the table below, for November 2008 compared to the situation of November 2007:

- GWh -

Acquisition structure of incumbent suppliers for regulated REM component	November 2007	November 2008
Regulated contracts	1947.14	1926.90
Negotiated contracts	36.55	8.05
Contracts concluded on centralized markets		-
DAM	38.77	57.05

The structure of the electricity purchased by the incumbent suppliers from the main generators on regulated contracts is presented in the following graph for November 2008:



Source: Monthly reports of the incumbent suppliers – processed by MG

Likewise to the situation presented for the regulated REM, the table below presents the acquisition structure of incumbent suppliers (before the delivery day), corresponding to the competitive REM (energy supplied at negotiated prices to the consumers who renounced to regulated tariffs) for November 2008 compared to November 2007:

- GWh -

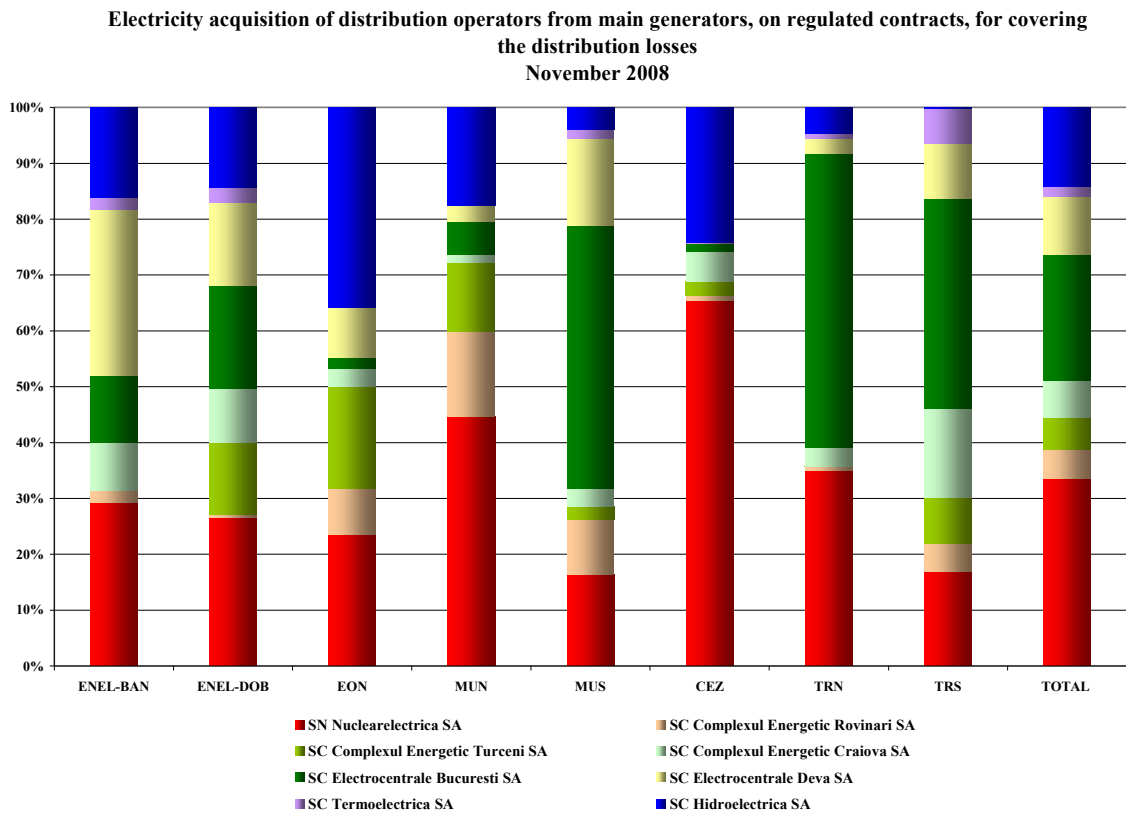
Acquisition structure of incumbent suppliers for competitive REM component	November 2007	November 2008
Import	-	39.88
Negotiated contracts with suppliers	142.99	163.62
Negotiated contracts with generators	38.16	19.20
Contracts concluded on centralized markets	171.65	50.40
DAM	58.10	87.80

Main distribution operators

The following table shows the electricity acquisition structure of main distribution operators (before the delivery day), for covering the distribution network losses, for November 2008 compared to November 2007:

Acquisition structure	- GWh -	
	November 2007	November 2008
Regulated contracts	662.09	512.80
Negotiated contracts	19.55	4.44
Contracts concluded on centralized markets		-
DAM	62.02	146.26

The electricity purchased by the 8 distribution operators from the main generators on regulated contracts, for covering their network losses is presented in detail in the following graph, for November 2008:



6. Concentration indicators on the wholesale electricity market and its components

According to the economic theory and the EU documents, the following market concentration indicators may be defined:

- HHI, Herfindahl-Hirschman Index = sum of square market shares of participants (%):

The indicator values signify:

HHI < 1000	unconcentrated market;
1000 < HHI < 1800	moderately concentrated market;
HHI > 1800	highly concentrated market.

- C3 = sum of market shares of the main three participants in the market:

The indicator values signify:

40% < C3 < 70% moderately concentrated market;
 C3 > 70% highly concentrated market.

These concentration indicators may be defined for the wholesale market (electricity market or ancillary services market) or for each of its components where direct competition takes place.

Concentration indicators and market shares of the electricity generators

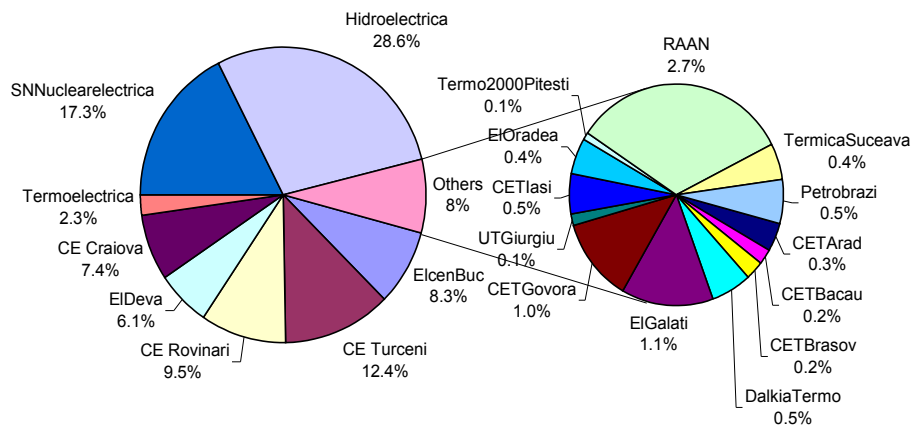
The market structure regarding the electricity generation offers an initial basis for analyzing the possible competitiveness level of the electricity market.

The following table presents the concentration indicators of electricity generation for November 2008, calculated based on electricity delivered into the networks by the generators with dispatchable units.

Indicator	C1	C3	HHI
Value	19%	53%	1289

The market shares of the electricity generators, taking into account all components of the wholesale electricity market, are presented in the following graph, for eleven months of 2008. These market shares are calculated based on the electricity delivered into networks.

**Market shares of dispatchable generators by delivered electricity
 January - November 2008**



Source: Monthly reports of generators – processed by MG

A component of the WEM where direct competition between generators exists is the BM. The values of concentration indicators on this market for November 2008 are determined based on effectively delivered electricity, for each type of regulation defined within the Commercial Code, and they are presented in the following table:

Structure/ concentration indicators of BM	Regulation					
	Secondary		Fast tertiary		Slow tertiary	
	upward	downward	upward	downward	upward	downward
C1 (%)	70	68	55	32	26	26
C3 (%)	70	68	78	86	66	67
HHI	5178	4969	3490	2527	2053	1886

The competition between generators is also present when speaking about the ensuring the reserves necessary for security of supply in the NES. Due to the fact that the generators have different levels of capabilities for ensuring this type of service, this market has a regulated component.

The relationship between regulated and competitive components on the ancillary services market as well as the main concentration indicators on each type of reserve (secondary, fast tertiary and slow tertiary) are presented in the following table for November 2008:

Concentration indicators on ancillary services market		Secondary reserve	Fast tertiary reserve	Slow tertiary reserve	Capacity reserve
regulated component	contracted quantity (h*MW)	262700	569700	181889	-
	C1 (%)	85.5	83.8	78.3	-
	C3 (%)	97.9	92.2	100	-
competitive component	contracted quantity (h*MW)	0	0	26270	460080
	C1 (%)	0	0	56.6	72.6
	C3 (%)	0	0	100	100
	HHI	0	0	5087	5650

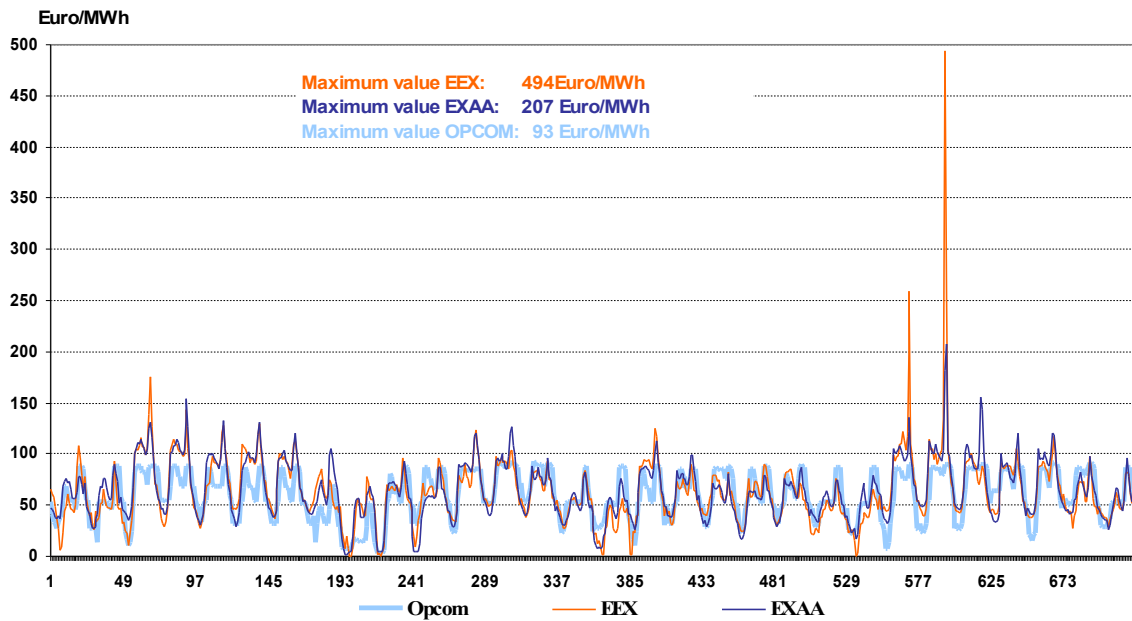
7. Price evolution on wholesale electricity market

SC Opcom SA is the administrator of DAM. The MCP on DAM represents a reference value for the prices on the bilateral contracts. The evolution of hourly and daily average prices on DAM in November 2008 is presented in the followings graphs, along with the prices on EEX and EXXA.

For comparison with prices on the European power exchanges, the spot price on SC Opcom SA is denominated in EUR, taking into consideration the daily exchange rates Euro/leu communicated by the National Bank of Romania.

HOURLY SPOT PRICES

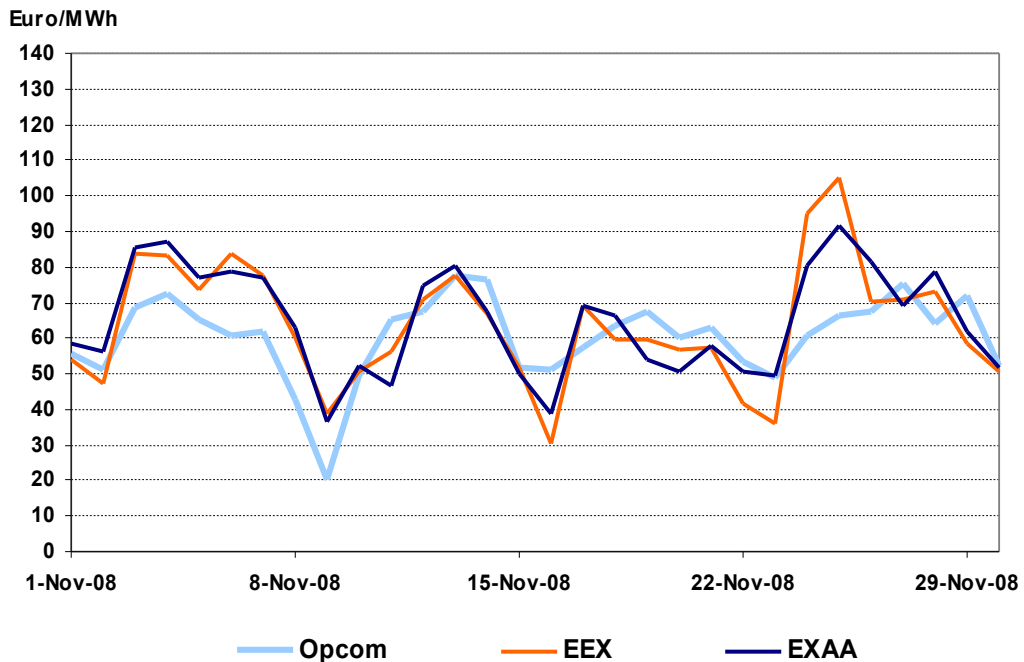
November 2008



Source: Daily reports of SC Opcom SA and published data of EXAA and EEX
 – processed by MG

DAILY AVERAGE SPOT PRICES

November 2008

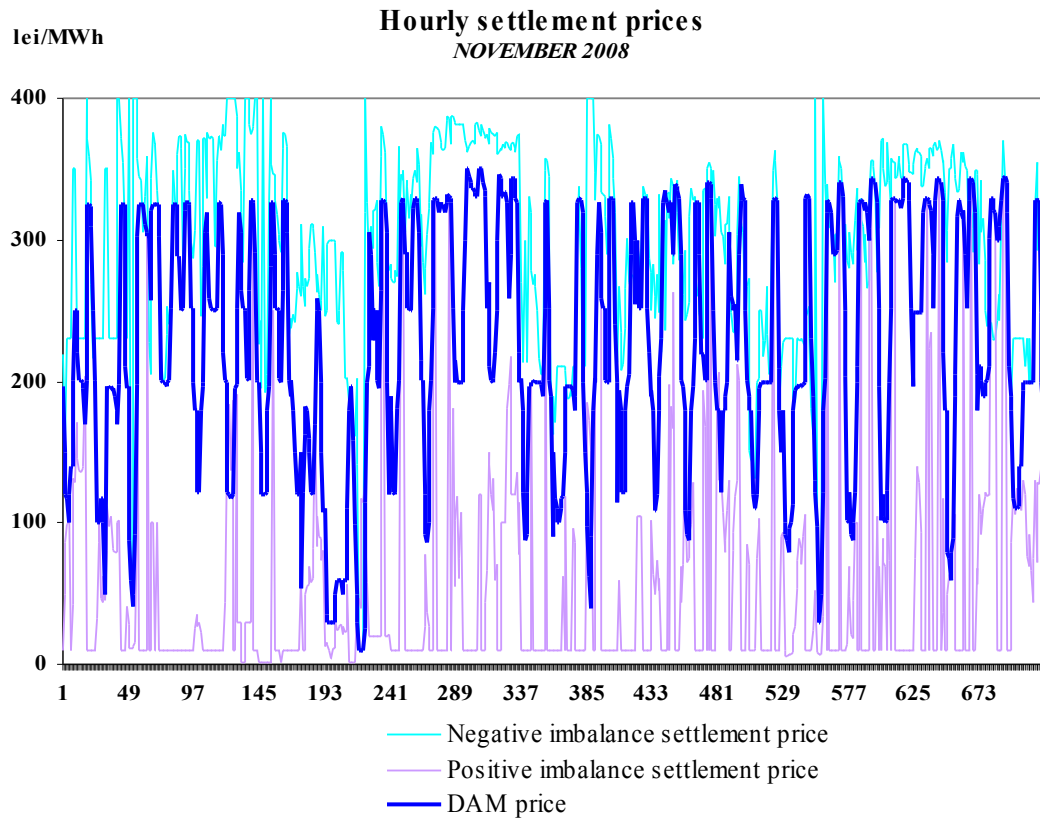


Source: Daily reports of SC Opcom SA and published data of EXAA and EEX
 – processed by MG

In order to cover the differences between planned/contracted amounts of consumption/ generation and the real time consumption, the system operator (CN Tranelectrica SA) operates the BM by buying or "selling" electricity at prices determined by the merit order of dispatchable generators' offers. The participants who generate the imbalances, grouped in BRPs, have to bear the imbalances costs. For the negative imbalances, they have to pay the settlement price resulting

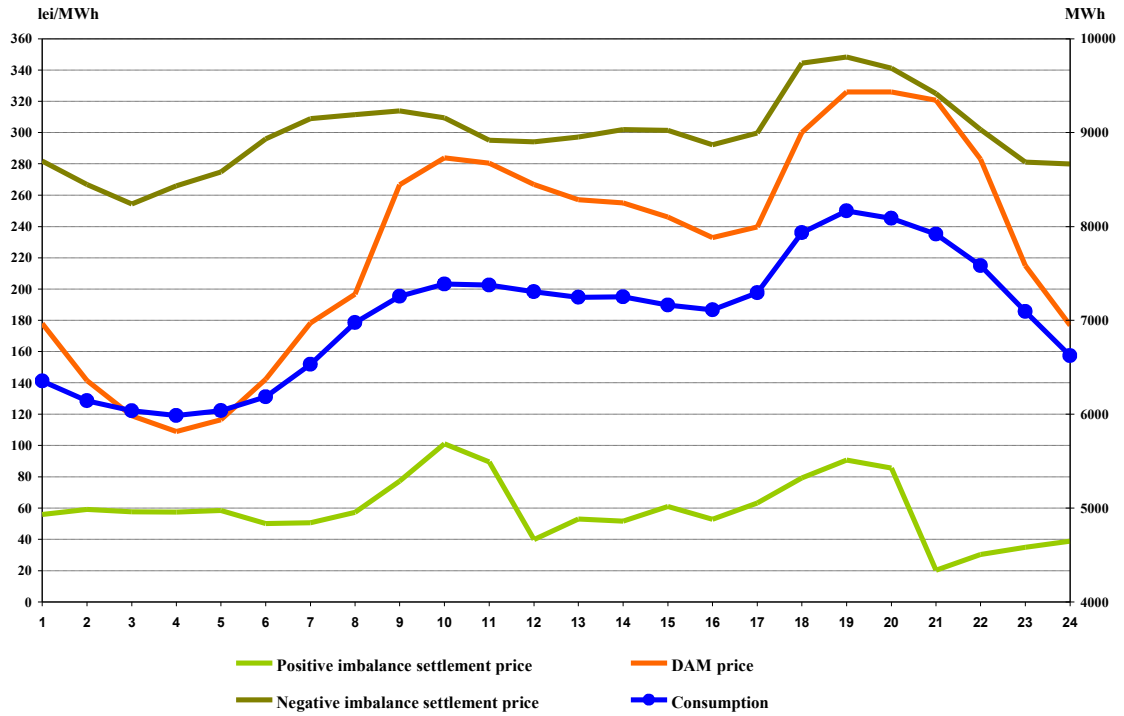
from the upward bids accepted on the BM, while for the positive imbalances they receive the settlement price resulting from the downward bids accepted on the BM.

The settlement prices (MCP on DAM, negative imbalance settlement price and positive imbalance settlement price) are represented on the same graph, showing the two markets correlation degree. In the first graph the prices are expressed in hourly values, in the second graph in hourly average values compared to internal consumption, and in the last graph in average monthly values.



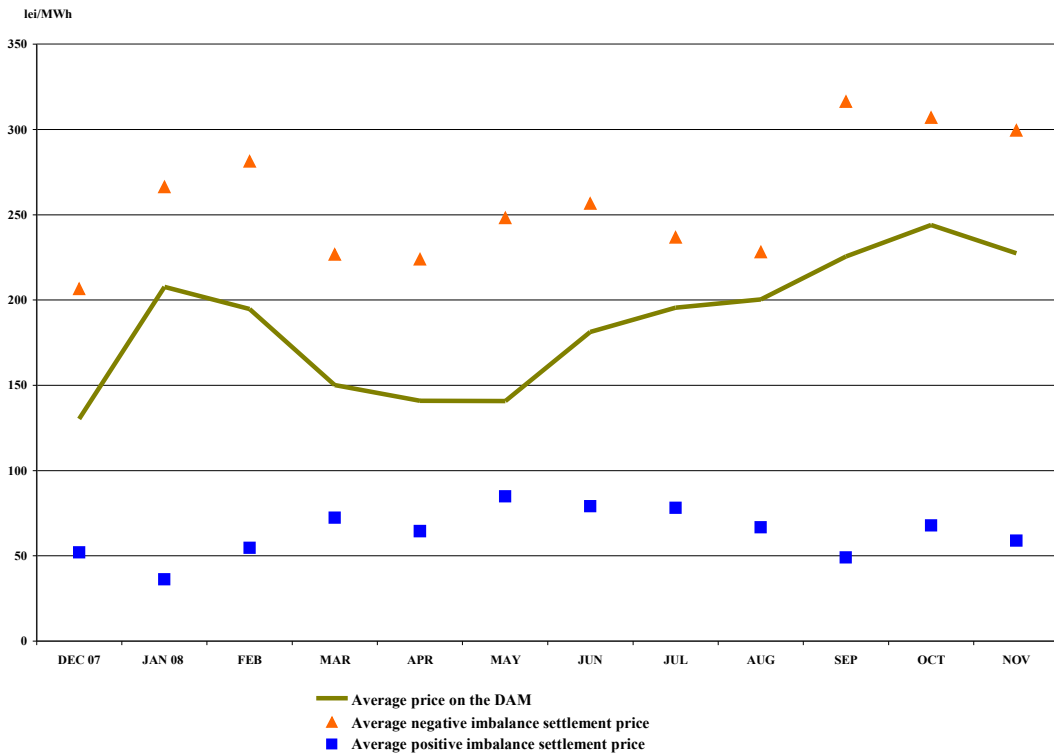
Source: Daily/monthly reports of SC Opcom SA – processed by MG

Hourly average settlement prices and internal consumption
November 2008



Source: Monthly reports of SC Opcom SA and CN Transelectrica SA – processed by MG

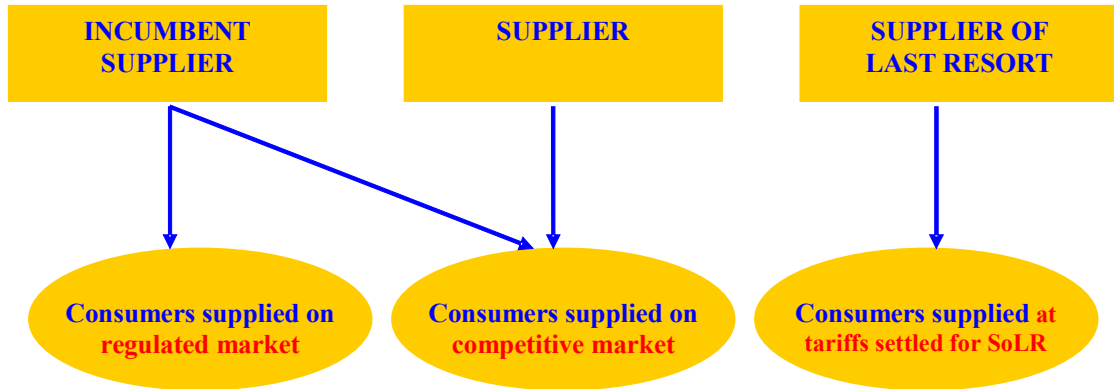
Monthly average prices on DAM and BM
- December 2007 - November 2008 -



Source: Monthly/daily reports of SC Opcom SA – processed by MG

III. RETAIL ELECTRICITY MARKET

1. Structure of the retail electricity market



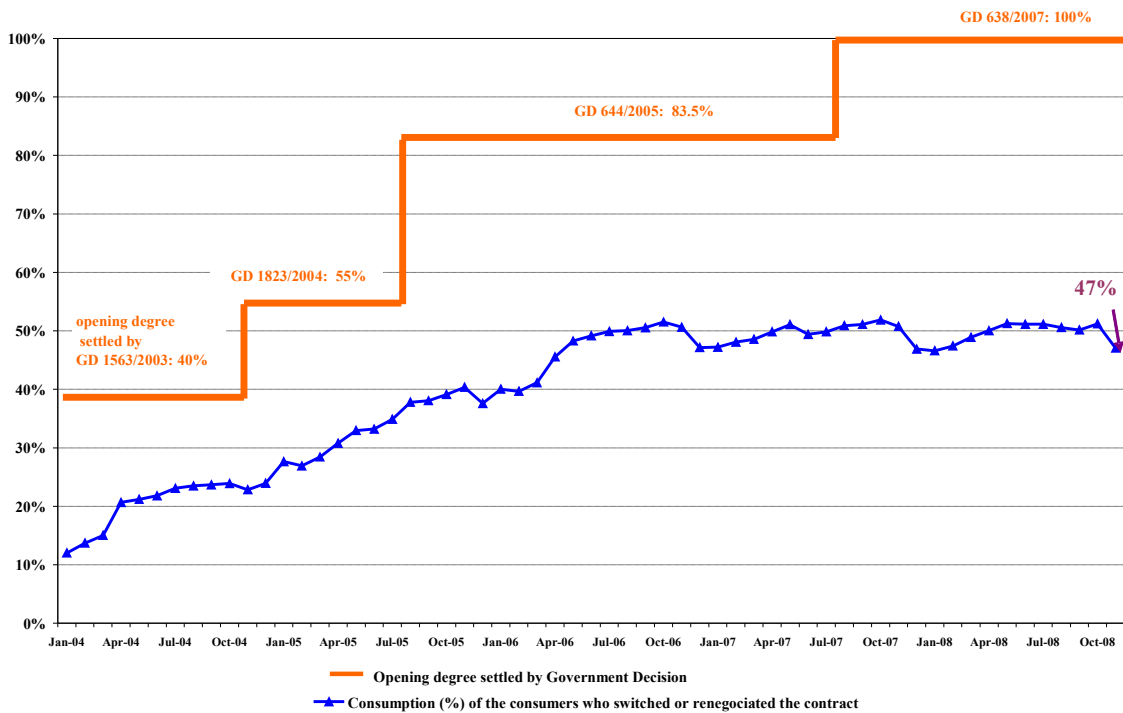
2. Steps in the opening process of the electricity market

Government Decision	Opening degree %	Annual consumption threshold GWh/year
No. 122/2000, published in O.G. 77/21.02.2000	10	100
No. 982/2000, published in O.G. 529/27.10.2000	15	100
No. 1272/2001, published in O.G. 832/21.12.2001	25	40
No. 48/2002, published in O.G. 71/31.01.2002	33	40
No. 1563/2003, published in O.G. 22/12.01.2004	40	20
No. 1823/2004, published in O.G. 1062/16.11.2004	55	1
No. 644/2005, published in O.G. 684/29.07.2005	83.5	-
No. 638/2007, published in O.G. 427/27.06.2007	100	-

3. Electricity market opening degree

The following graph contains the quota of the consumption from total consumption, of the consumers who switched their supplier or renegotiated their contracts with the suppliers operating on the regulated market, during January 2004 – November 2008. The values presented are cumulated from the beginning of the opening process and are presented monthly.

Opening degree evolution for electricity market
January 2004 - November 2008



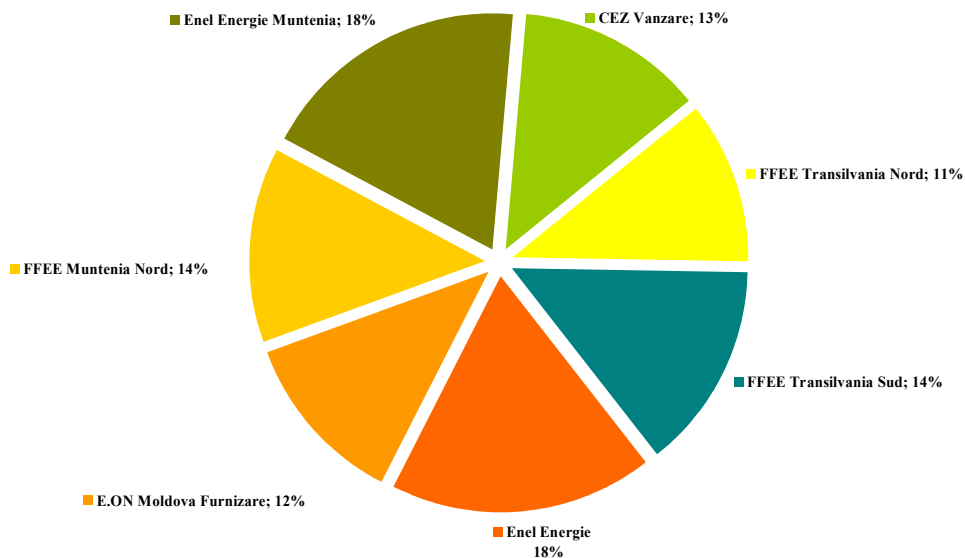
Source: Monthly reports of the final consumers' suppliers – processed by MG

4. Market shares of the electricity suppliers

In the following two graphs there are presented the market shares of electricity suppliers on the retail market, calculated:

- a) for incumbent suppliers - based on the electricity supplied for the consumers at regulated tariffs,

Market shares of incumbent suppliers on regulated market
- January - November 2008 -



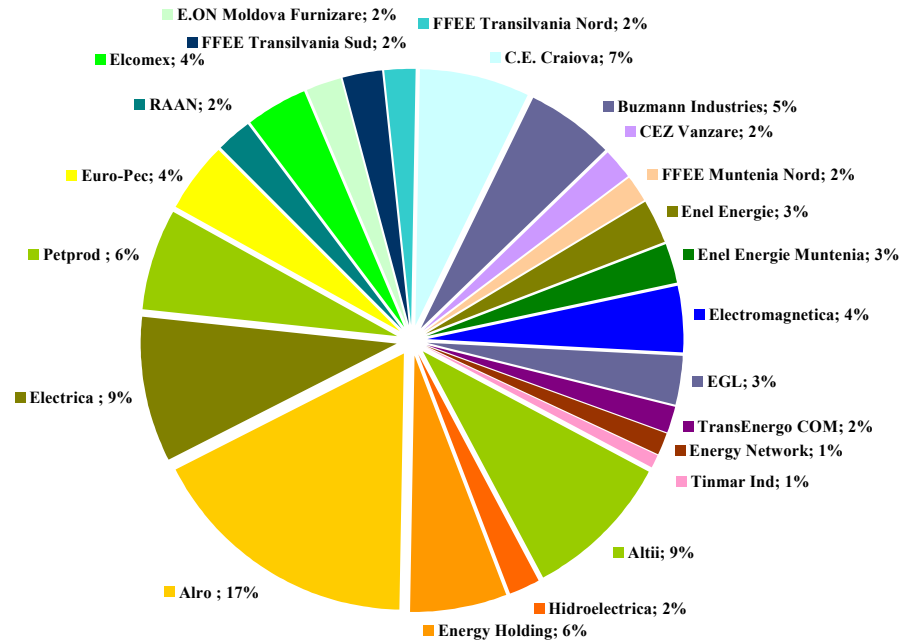
Consumption of consumers supplied at regulated tariffs: 21264 GWh

Source: Monthly reports of the incumbent suppliers – processed by MG

And

b) for all suppliers (including the incumbents) based on the electricity supplied for the consumers at negotiated prices on competitive component of REM:

Market shares of suppliers delivering electricity on the competitive market
- January - November 2008 -



Consumption on competitive market: 20895 GWh

Structure indicators:

HHI - 657

C3 - 33%; C1 - 17%

Category "Others" includes 26 suppliers with individual market share less than 1%

Source: Monthly reports of the competitive suppliers— processed by MG

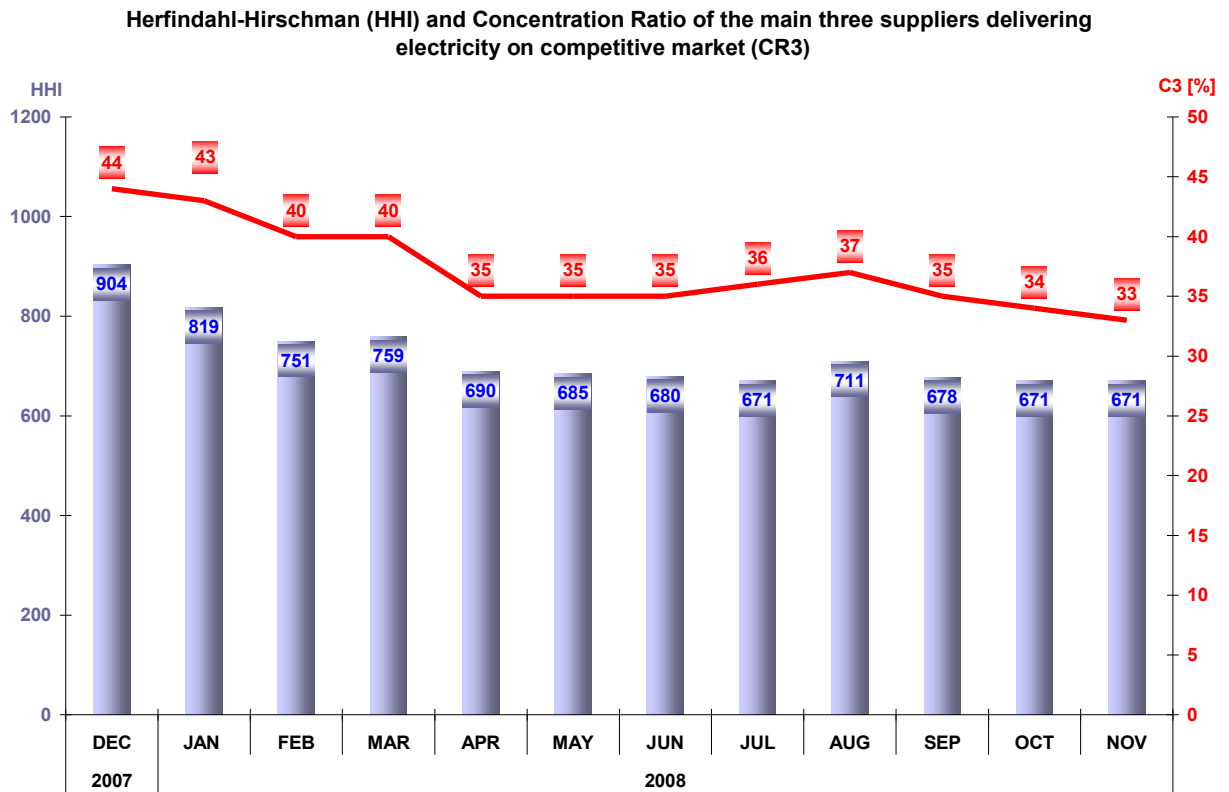
The electricity supplied to the final consumers used for calculating the market share of every supplier includes also the self-consumption of that particular supplier (e.g. consumers with supply license who buy electricity for themselves from WEM as competitive suppliers).

The analysis of the competitive suppliers' activity on the competitive REM component compared to their activity on the WEM is developed based on the weight of the electricity sold to final consumers in total electricity sales. The table below presents the number of suppliers acting on the REM, grouped into categories of sales weight during November 2008.

Number of suppliers - November 2008 -	Share of sales to final consumers from total sales transactions			
	100%	75% - 100%	50% - 75%	<50%
Competitive	4	8	9	12
Incumbent	5	1	0	1

5. Concentration indicators of the competitive retail electricity market

The monthly evolution of concentration indicators (C3, HHI) determined on the competitive component of the REM is presented in the following graph:



Source: Monthly reports of the suppliers – processed by MG

The table below shows the values of structure indicators of competitive component of REM for November 2008, calculated for each consumer category as defined by Directive 377/90:

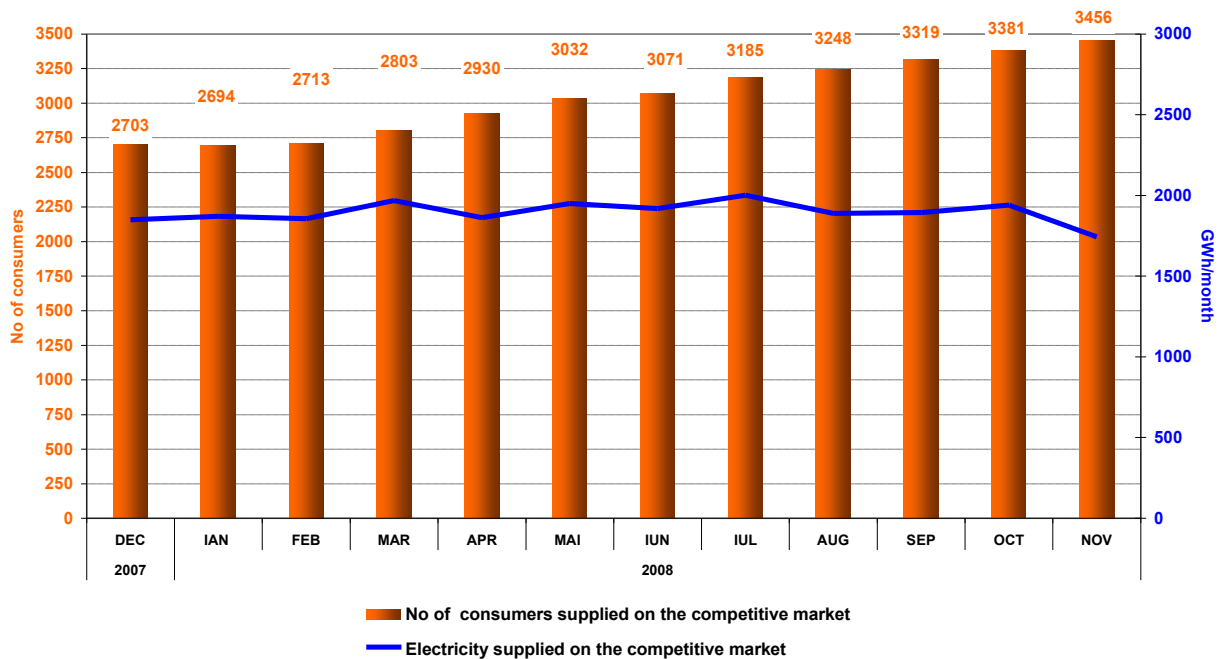
Indicators - November 2008 -	Consumer category							Total
	IA	IB	IC	ID	IE	IF	Others	
C1 -% -	38	36	19	15	13	34	32	18
C3 - % -	76	63	43	33	38	66	59	33
HHI	2662	1804	886	689	747	1967	1642	671
No. of suppliers	9	28	35	38	23	10	13	45
Incumbent suppliers	5	7	7	7	6	2	1	7
Competitive suppliers	4	20	25	28	16	8	8	33
Generators acting as suppliers	0	1	3	3	1	0	4	5

6. Evolution of consumers' number and of the electricity delivered

Number of consumers supplied on the competitive market is presented as total value from the beginning of the market opening process; for November 2008 this number is split into categories, according to the provisions of the European Council Directive 90/377/EC. The table below presents the bands of consumption of each category of consumers:

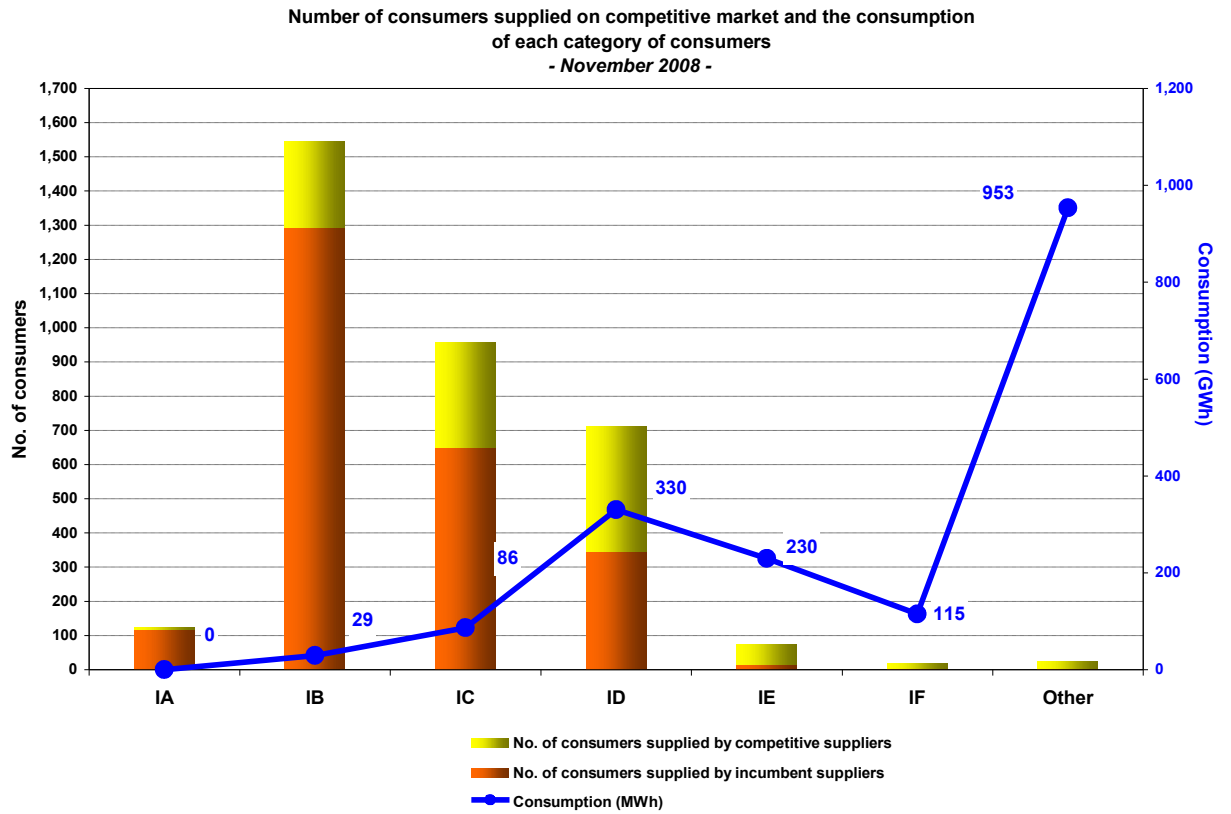
Industrial end-user	Annual electricity consumption (MWh)	
	Lowest	Highest
IA		<20
IB	20	<500
IC	500	<2000
ID	2000	<20000
IE	20000	<70000
IF	70000	<=150000
Others	>150000	

Evolution of the number of supplied consumers and delivered electricity on the competitive market



Source: Monthly reports of the competitive suppliers – processed by MG

The number of consumers on competitive market related to January-November 2008 has been updated based on the corrections made and reported by one of the suppliers operating the retail electricity market.



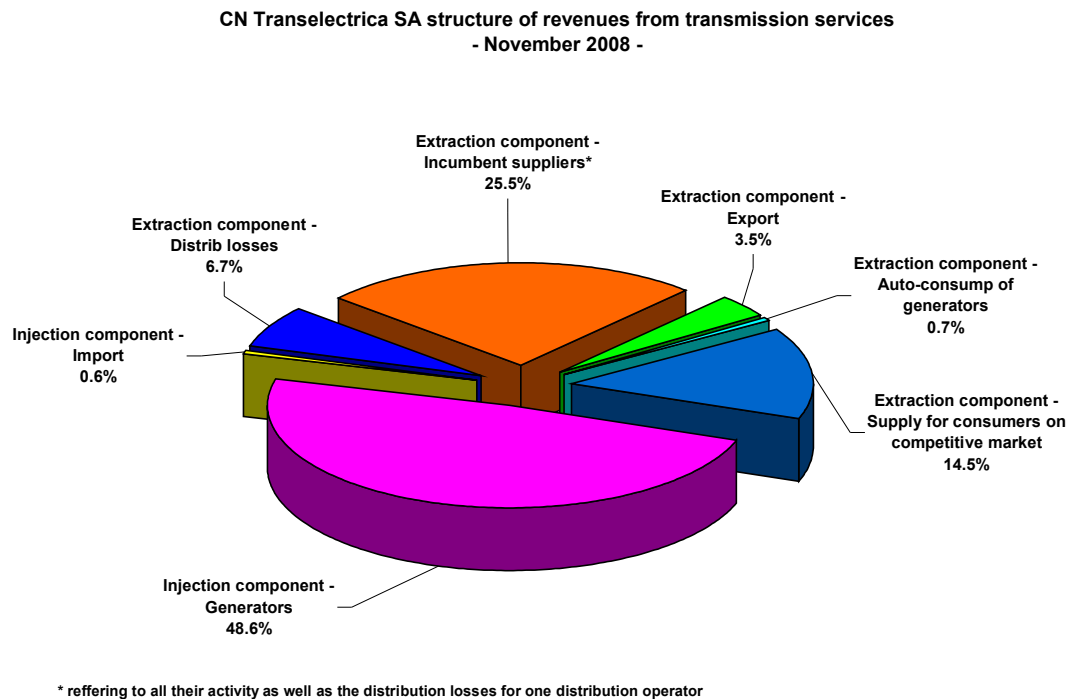
Source: Monthly reports of the suppliers – processed by MG

IV. TRANSMISSION AND SYSTEM OPERATOR C.N. TRANSELECTRICA S.A.

CN Transelectrica SA performs the electricity transmission service at regulated tariffs, which have two components:

- injection component (TG), aimed to determine an optimum geographic positioning of the new power units;
- extraction component (TL), as an incentive for an equilibrate positioning into the territory of the consumers.

The following graph presents the structure of CN Transelectrica SA revenues from performing the transmission services and reflects the structure of its clients benefiting from this type of service in November 2008.

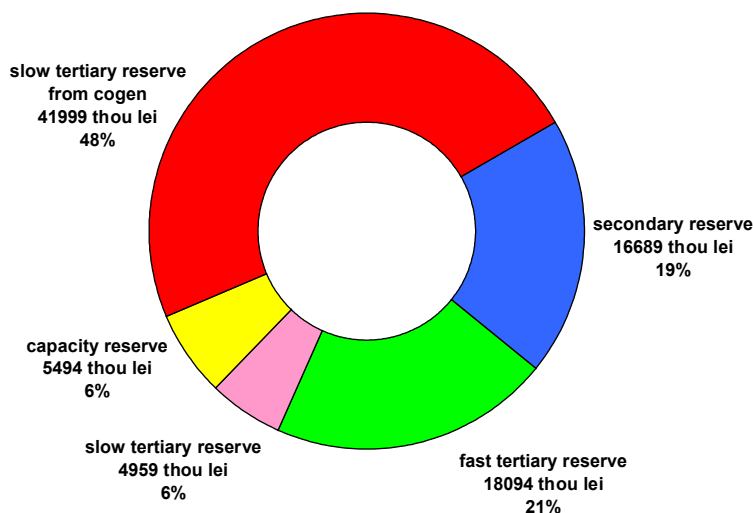


Source: Monthly reports of CN Transelectrica SA – processed by MG

In order to perform the system operator tasks, CN Transelectrica SA assesses and contracts reserves (ancillary services) from qualified generators, which are integrated on BM. The ancillary services used are: reserves for secondary, fast tertiary, slow tertiary regulation and slow tertiary reserve from cogeneration. Starting with July 2007, the rules for capacity reserve entered into force, by determination of the reserve dimensions, the way in which the suppliers of this service are selected and the conditions in which this new type of reserve may be used by CN Transelectrica SA.

The following graph presents the costs of ancillary services CN Transelectrica SA had to pay in November 2008. In order to cover these costs and its own operating costs, TSO applies a regulated tariff for system services.

Structure of CN Transelectrica SA costs with ancillary services acquired from qualified generators
- November 2008 -



Source: Monthly reports of CN Transelectrica SA – processed by MG

V. EVOLUTION OF MARKET RULES IN NOVEMBER 2008

- In November, ANRE approved Order no. 124/2008 regarding the payments on BM and BRP imbalances. In this way the payments will be made faster than before and the regulation of differences will be made when the final settlement is finished.
- ANRE approved prices on electricity and heat for SC CET Iasi SA, SC UT Giurgiu SA, SC Electrocentrale Deva SA and SC Termoficare 2000 Pitesti SA.
- ANRE also issued Decisions for approving the configurations of cogeneration priority generation.
- No regulations concerning the functioning of the retail electricity market were issued in November.

VI. EXPLANATIONS AND ABBREVIATION

1. Explanations

- **Self-consumption of generators** – in the graph regarding the revenues of CN Transelectrica SA, the self-consumption exclusively represents the generators consumption at consumption places other than the generation sites.
- **Internal consumption** represents the electricity covered by the wholesale market participants and calculated as *Delivered electricity + Import – Export*.
- **Consumption of consumers on regulated market** represents the consumption of consumers supplied at regulated tariffs by the incumbent suppliers.
- **Consumption of consumers on competitive market** represents the consumption of consumers supplied at negotiated prices.
- **Fuel consumption** represents the fuel consumed for generating electricity and heat.

- **Electricity delivered into the grid** includes also the own consumption of auto-generators such as RAAN and SNP Petrom together with the electricity sold by the generators through direct lines or consumed by themselves at other consumption sites.
- **Competitive supplier** represents, within the present document, the supplier which is active on the competitive retail market.

2. Abbreviation

- MG – Monitoring Group
- EEX – European Energy Exchange – Leipzig, Germany, www.eex.de
- EXAA – Energy Exchange Austria, www.exaa.at
- DAM – Day Ahead Market
- BM – Balancing Market
- MCP – Market Clearing Price
- BRP – Balancing Responsible Party
- TG/TL – injection / extraction component of the transmission tariff
- CMBC – centralised market of bilateral contracts
- CMBC-CN – centralised market for partially standardised bilateral contracts with continuous negotiation
- NES – National Energy System
- WEM – wholesale electricity market
- REM – retail electricity market
- RCE – Romanian Commodities Exchange