

**REPORT ON RESULTS OF MONITORING THE  
ROMANIAN ELECTRICITY MARKET  
JUNE 2011**

*- This document represents an unauthorised translation of the Romanian document -*

---

ANRE makes all the necessary efforts to present within the hereabove mentioned document, as accurately and concisely as possible, the data based on the legal entities reports. This document published by ANRE is for information purpose only. ANRE is not and will not be under any circumstances legal responsible for any inadvertences regarding the information presented within the document or for the improper way the information is used

## TABLE OF CONTENTS

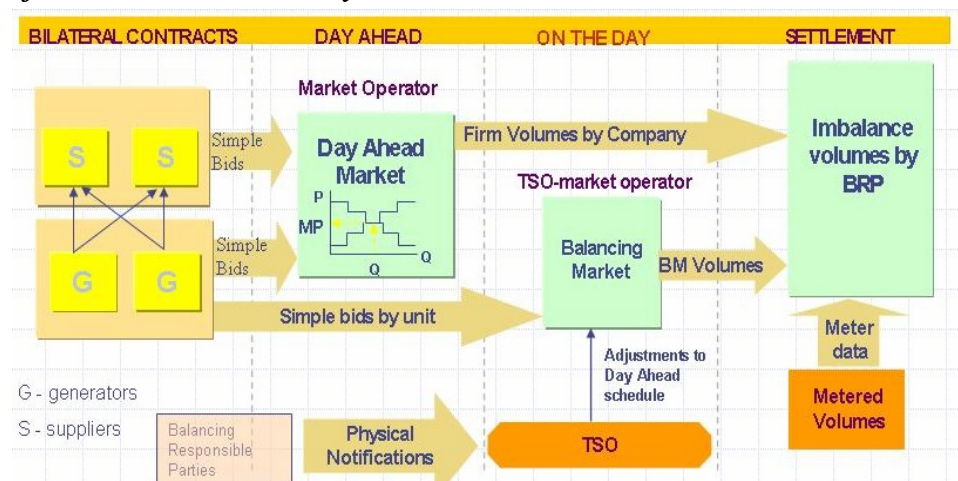
<u>I.MAIN EVENTS IN THE DEVELOPMENT OF THE ROMANIAN ELECTRICITY MARKET</u>	<u>3</u>
<u>II.WHOLESALE ELECTRICITY MARKET</u>	<u>3</u>
<u>1.Structure of the wholesale electricity market</u>	<u>3</u>
<u>2.Participants on the wholesale electricity market</u>	<u>4</u>
<u>3.Generation structure of National Energy System on resources types</u>	<u>5</u>
<u>4.Transactions' structure on the wholesale electricity market</u>	<u>7</u>
<u>5.Trading structure on the wholesale electricity market of different participant categories</u>	<u>12</u>
<u>6.Concentration indicators on the wholesale electricity market and its components</u>	<u>18</u>
<u>7.Price evolution on wholesale electricity market</u>	<u>20</u>
<u>III.RETAIL ELECTRICITY MARKET</u>	<u>25</u>
<u>1. Structure of the retail electricity market</u>	<u>25</u>
<u>2.Steps in the opening process of the electricity market</u>	<u>25</u>
<u>3.Electricity market opening degree</u>	<u>25</u>
<u>4.Market shares of the electricity suppliers</u>	<u>26</u>
<u>5.Concentration indicators of the competitive retail electricity market</u>	<u>28</u>
<u>6.Evolution of consumers' number and of electricity delivered</u>	<u>29</u>
<u>7.Average selling prices of consumers supplied on the competitive market</u>	<u>31</u>
<u>IV.TRANSMISSION AND SYSTEM OPERATOR C.N. TRANSELECTRICA S.A.</u>	<u>32</u>
<u>V.EVOLUTION OF MARKET RULES IN JUNE 2011</u>	<u>33</u>
<u>VI.EXPLANATIONS AND ABBREVIATION</u>	<u>33</u>

## I. MAIN EVENTS IN THE DEVELOPMENT OF THE ROMANIAN ELECTRICITY MARKET

- GD 365/1998 – vertically integrated monopol – RENEL – was split in. Separated distribution and supply companies (SC Electrica SA) and generation companies (SC Termoelectrica SA and SC Hidroelectrica SA) were established within a new company - CONEL SA. Two other electricity generators (SN Nuclearelectrica SA and RAAN) were separately established;
- transmission, system services and market administration were separately organised, within CONEL SA;
- the relationships between parties within the electricity sector were settled based on contracts;
- GD 122/2000 – electricity market opens at 10%;
- GD 627/2000 – CONEL holding is dissolved;
- September 2000 – launch of the compulsory electricity spot market in Romania, administrated by OPCOM and organized based on pool model;
- GD 1342/2001 – SC Electrica SA splits in 8 subsidiaries for electricity distribution and supply;
- GD 1524/2002 – SC Termoelectrica SA reorganizes in several separate legal entities for generation;
- July 2005 – launch of the new market model, based on:
  - voluntary spot market, with both sides offers and bilateral settlement;
  - compulsory balancing market, with TSO as single counterparty;
  - financial responsibilities of the balancing are allocated to the BRP;
- GD 644/2005 – electricity market opens at 83.5%;
- November 2005 – launch of the green certificates market;
- December 2005 – launch of the centralized market for bilateral contracts;
- March 2007 – launch of the centralized market for partially standardized bilateral contracts with continuous negotiation;
- GD 638/2007 – fully opening of electricity and gas markets;
- July 2007 – rules for capacity market have been established.
- July 2008 – launch of the mechanism of direct debit and guarantee for electricity transactions on the day-ahead market (OPCOM as central counterparty).
- August 2008 – process of legal unbundling of distribution and supply companies has been concluded

## II. WHOLESALE ELECTRICITY MARKET

### 1. Structure of the wholesale electricity market



## 2. Participants on the wholesale electricity market

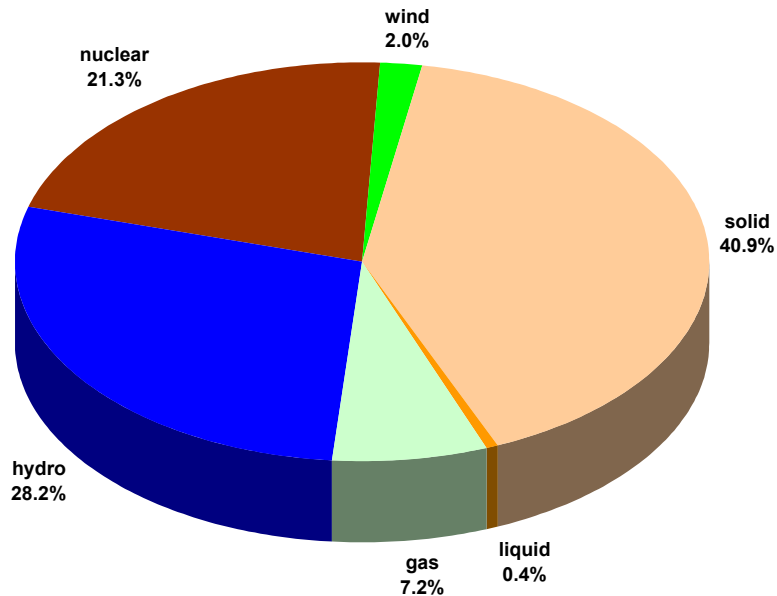
The market participants\* acting on the electricity market in June 2011 are presented below split into categories:

No.	Name	No.	Name	No.	Name		
<b>A Electricity generators operating dispatching units</b>							
1	SC CET Bacău SA	<b>F Electricity Suppliers acting exclusively on the wholesale market</b>					
2	SC CET Braşov SA	1	Alpiq Energy SE	1	SC Alpiq RomEnergie SRL		
3	SC CET Găvruta SA	2	SC AMV Style SRL	2	SC Alpiq RomIndustries SRL		
4	SC CET Iaşi SA	3	CEZ as	3	SC Alro SA		
5	SC CET Oradea SA	4	SC CEZ Trade Romania SRL	4	SC Arcelormittal Galaţi SA		
6	SC Cernavoda Power SRL	5	Danske Commodities/s Aarhus	5	SC Areleo Distribuţie SRL		
7	SC Dalkia Termo Prahova SRL	6	Electrabel SA	6	SC Aton Transilvania SRL		
8	SC EDP Renewables România SRL	7	SC Edison Trading SpA	7	SC Beny Alex SRL		
9	SC Electrocentrale Bucureşti SA	8	SC Enel Trade Romania SRL	8	SC Biol Energy SRL		
10	SC Electrocentrale Galaţi SA	9	Energy Financing Team Switzerland	9	SC EFE Energy SRL		
11	SC Enel Green SRL	10	SC Energy Market Consulting SRL	10	SC EGL Gas & Power Romania SA		
12	SC Lukoil Energy & Gaz Romania SRL	11	SC Energostream SRL	11	SC Elcomex EN SRL		
13	SC Romconstruct Top SRL	12	E.ON Energy Trading SE	12	SC Electrica SA		
14	SC Termica SA Suceava	13	SC Ezpada SRL	13	SC Electricom SA		
15	SC Termoelctrica SA	14	Ezpada SRO	14	SC Electromagnetica SA		
16	SC Tomis Team SRL	15	Gazprom Marketing & Trading	15	SC Energotrans SRL		
<b>A1 Electricity generators operating dispatching units and acting also as suppliers on the competitive market</b>							
17	RAAN	16	SC GDF Suez Energy Trading Romania SRL	16	SC Energy Distribution Services SRL		
18	SN Nuclearelectrica SA	17	GEN-I Bukarest Electricity Trading and Sales	17	SC Energy Financing Team Romania SRL		
19	SC OMV Petrom SA	18	SC Global Electric Trading SRL	18	SC Energo Holding SRL		
20	SC CE Craiova SA	19	SC Grivco SA	19	SC Energy Network SRL		
21	SC CE Rovinari SA	20	SC Grupul de Comerţ şi Investiţii SRL	20	SC Energon Power&Gaz SRL		
22	SC CE Turceni SA	21	Holding Slovenske Elektrarne d.o.o.	21	SC Enex SRL		
23	SC CET Arad SA	22	SC Invest Dinamic Project SRL	22	SC Ennet Grup SRL		
24	SC Electrocentrale Deva SA	23	SC Jas Budapest Zrt	23	SC Enol Grup SA		
25	SC Hidroelctrica SA	24	JP Morgan Ltd	24	SC EURO-PEC SA		
<b>B Transmission System Operator</b>							
1	CN TRANSELECTRICA SA	25	SC Korlea Invest SRL	25	SC Fidelis Energy SRL		
<b>C DAM, Bilateral Contracts Market, Green Certificates Market Operator</b>							
1	SC OPCOM SA	26	MVM Partner Energy Trading Ltd	26	SC GDF SUEZ Energy Romania SA		
<b>D Distribution network operators</b>							
1	SC CEZ Distribuţie SA	27	OMV Trading GmbH	27	SC General Com Invest SRL		
2	SC ENEL Distribuţie Banat SA	28	SC RomEnergy Industry SRL	28	SC Hidroconstructia SA		
3	SC ENEL Distribuţie Dobrogea SA	29	RWE Supply Trading GmbH	29	SC ICCO Energ SRL		
4	SC E.ON Moldova Distribuţie SA	30	Repower Trading Ceska Republica	30	ILJOTOMI Impex GRPA		
5	SC ENEL Distribuţie Muntenia SA	31	SC RE Power Generation SRL	31	SC ICPE Electrocond Technologies SA		
6	SC FDEE Electrica Distribuţie Muntenia Nord SA	32	SC Repower Vanzari Romania SRL	32	SC Luxten LC SA		
7	SC FDEE Electrica Distribuţie Transilvania Sud SA	33	SC Romelectro SA	33	Magyar Aramszolgalato KFT		
8	SC FDEE Electrica Distribuţie Transilvania Nord SA	34	SC Rudnap SRL	34	OET Obedineni Energini Targovtsi		
<b>E Incumbent suppliers</b>							
1	SC CEZ Vanzare SA	35	SC Sindserv SA	35	SC Petprod SRL		
2	SC ENEL Energie SA	36	Societatea Naţională a Lignitului Oltenia	36	SC Renovation Trading SRL		
3	SC E.ON Energie Romania SA	37	Statkraft Markets GmbH	37	SC TEN Gaz SRL		
4	SC ENEL Energie Muntenia SA	38	SC Statkraft Romania SRL	38	SC Timmar Ind SA		
5	SC FFEE Electrica Furnizare Muntenia Nord SA	39	SC TEN Transilvania Energie SRL	39	SC Transformer Supply SRL		
6	SC FFEE Electrica Furnizare Transilvania Sud SA			40	SC Transenergo Com SA		
7	SC FFEE Electrica Furnizare Transilvania Nord SA			41	SC UCM Energy SRL		

\*) The electricity market participants report to ANRE technical/commercial data according to the *Methodology of wholesale electricity market monitoring for assessing the competition level on market and preventing the abuse of dominant position*, approved by ANRE Order no. 35/2006. The table does not include the Balancing Responsible Parties (BRP). The BRP updated list is published on the Balancing Market Operator website - [www.ope.ro](http://www.ope.ro).

### 3. Generation structure of National Energy System on resources types

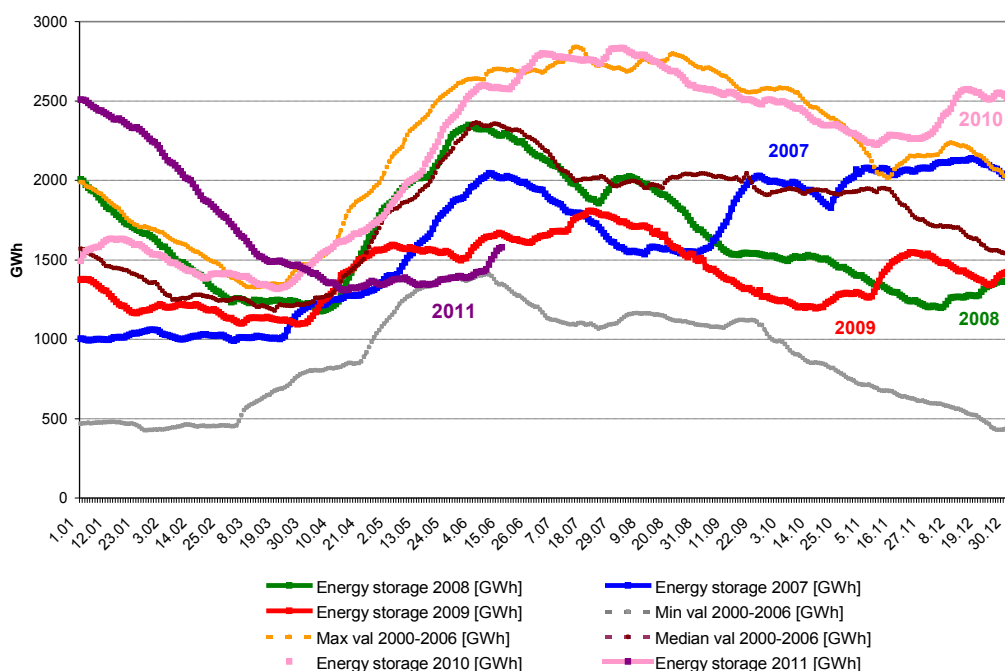
Electricity structure by primary sources  
(delivered by generators with dispatchable units)  
- June 2011 -



Source: Monthly reports of generators – processed by MG

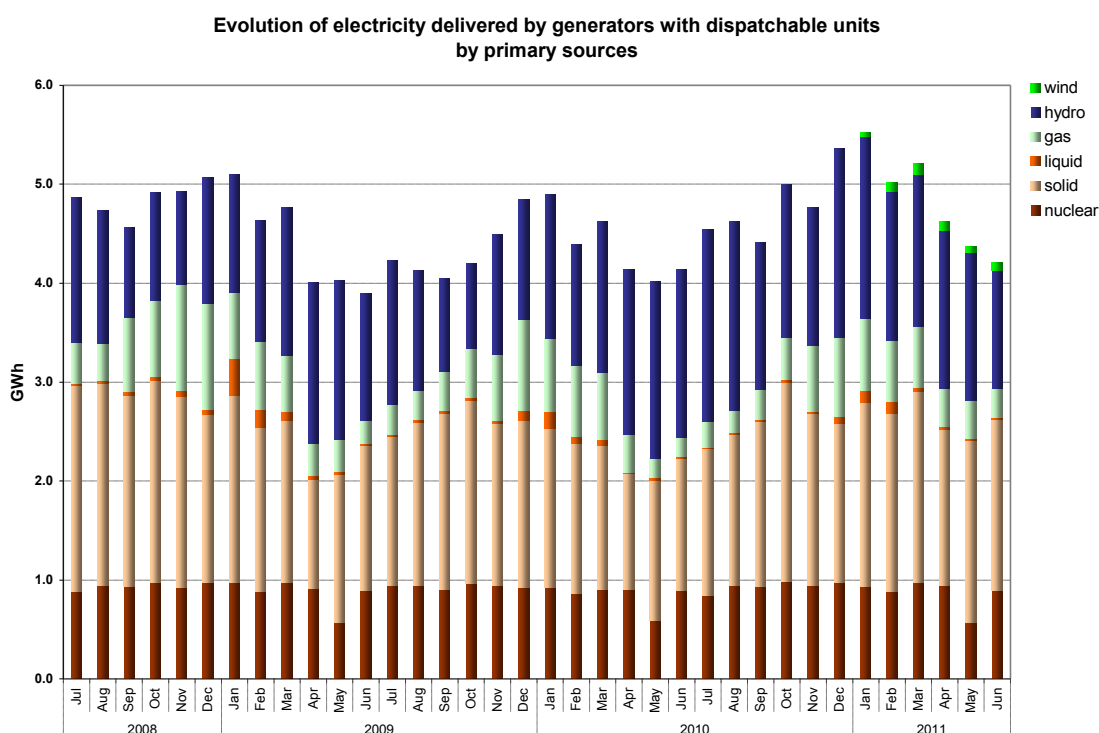
The electricity generated from hydro resources and the energy stored in the main water reservoirs are directly correlated. The following graph presents the evolution of daily amounts of energy storage during the last 4 years and compared to minimum, maximum and median values from 2000-2006.

Yearly evolution of daily values of energy stored in the main water reservoirs



Source: Monthly reports of S.C. Hidroelectrica S.A. – processed by MG

The evolution of delivered electricity structure, during the last 3 years, is the following:



Source: Monthly reports of generators – processed by MG

The following table presents the main data regarding the physical balance of electricity for May 2011 and for the first 6 months of 2011, compared to data for similar periods of 2010:

0	INDICATOR	MU	June 2010	June 2011	%	Jan-Jun 2010	Jan-Jun 2011	%
1	2	3	4	5=4/3*100	6	7	8=7/6*100	
1	Generated electricity	TWh	4.41	4.53	102.72	28.33	31.29	110.45
2	Delivered electricity	TWh	4.14	4.21	101.69	26.23	28.96	110.41
3	Import	TWh	0.05	0.08	160.00	0.58	0.34	58.62
4	Export	TWh	0.21	0.18	85.71	0.81	2.27	280.25
5	Internal consumption	TWh	3.98	4.10	103.02	26.01	27.03	103.92
6	Consumption of household consumers on the regulated market	TWh	0.86	0.88	102.33	5.74	5.81	101.22
7	Consumption of non-households consumption	TWh	2.66	2.70	101.50	15.85	17.09	107.82
7.1	on the regulated market	TWh	0.79	0.62	78.48	5.38	4.42	78.07
7.2	on the competitive market	TWh	1.87	2.08	111.23	10.47	12.67	121.01
8	Transmission – Injection component	TWh	4.00	4.14	103.50	25.74	28.45	110.53
9	Transmission – Extraction component	TWh	4.12	4.23	102.67	26.37	29.06	110.20
10	System services	TWh	4.12	4.23	102.67	26.37	29.06	110.20
11	Actual transmission grid losses	TWh	0.09	0.08	88.89	0.53	0.56	105.66
12	Heat generated for delivery	Tcal	618.09	641.06	103.72	10067.78	10240.45	101.72
13	Heat in co-generation	Tcal	440.50	555.89	126.20	8173.39	8551.03	104.62

Note: 1. Data shown in the table neither include the energy produced by the generators who do not own dispatchable units (positions 1 & 2) nor the energy delivered to the consumers directly connected to the power plants (positions 6 & 7).  
 2. The imported/exported quantities do not comprise transits and cross border exchange of CN Traselectrica SA with neighbor countries in order to ensuring the balance of the national energy system.  
 3. The electricity considered for transmission tariff – injection component do not comprise the electricity sold by generators for covering the transmission losses.

#### 4. Transactions' structure on the wholesale electricity market

The size of wholesale market depends on the sum of all transactions performed by the market players, exceeding the quantities physically transmitted from generation to consumption; the total transactions include also resale transactions made in order to match the contractual obligations and to obtain financial benefit.

Therefore, the wholesale electricity market includes: regulated contracts and bilateral negotiated contracts between generators and suppliers, regulated contracts for covering the network losses, bilateral negotiated contracts generator-generator and supplier-supplier, as well as contracts concluded on centralized markets: CMBC (centralized market of bilateral contracts), CMBC-CN (centralized market of partially standardised bilateral contracts, with continuous negotiation) and on the Power floor of RCE (Romanian Commodities Exchange), transactions on DAM (day-ahead market) and on BM (Balancing Market).

The volumes traded and the average prices on each type of contracts and on the main components of the wholesale market are presented in the following tables for June 2011 compared to the month before and June 2010:

<b>TRANSACTIONS ON THE WHOLESALE MARKET</b>	<b>May 2011</b>	<b>June 2011</b>	<b>June 2010</b>
<b>1. BILATERAL CONTRACTS' MARKET</b>			
traded volume (GWh)	<b>7154</b>	<b>6784</b>	<b>6091</b>
% from internal consumption (%)	170.6	165.3	153.0
average price (lei/MWh)	166.53	165.68	157.44
<b>1.1. Sales on regulated contracts</b>			
traded volume (GWh)	<b>2134</b>	<b>2090</b>	<b>2234</b>
% from internal consumption (%)	50.9	50.9	56.1
average price (lei/MWh)	158.34	154.95	156.52
<b>1.2. Sales on negotiated contracts*</b>			
traded volume (GWh)	<b>5021</b>	<b>4694</b>	<b>3858</b>
% from internal consumption (%)	119.7	114.4	96.9
average price (lei/MWh)	170.01	170.44	157.98
<b>2. EXPORT</b>			
traded volume** (GWh)	<b>252</b>	<b>184</b>	<b>207</b>
% from internal consumption (%)	6.0	4.5	5.2
average price (lei/MWh)	202.15	209.11	159.52
<b>3. CENTRALISED MARKETS OF CONTRACTS</b>			
traded volume (GWh)	<b>457</b>	<b>411</b>	<b>357</b>
% from internal consumption (%)	10.9	10.0	9.0
average price (lei/MWh)	169.93	174.10	154.30
<b>4. DAY AHEAD MARKET</b>			
traded volume (GWh)	<b>533</b>	<b>640</b>	<b>607</b>
% from internal consumption (%)	12.7	15.6	15.2
average price (lei/MWh)	226.46	206.13	131.78
<b>5. BALANCING MARKET</b>			
traded volume (GWh)	<b>386</b>	<b>339</b>	<b>298</b>
% from internal consumption (%)	9.2	8.2	7.5
upward volume (GWh)	<b>324</b>	<b>253</b>	<b>84</b>
average negative imbalance price(lei/MWh)	300.52	288.10	256
downward volume (GWh)	<b>62</b>	<b>86</b>	<b>214</b>
average positive imbalance price (lei/MWh )	69.86	64.36	47.97
<b>INTERNAL CONSUMPTION (includes distribution and transmission losses) (GWh)</b>	<b>4194</b>	<b>4104</b>	<b>3981</b>

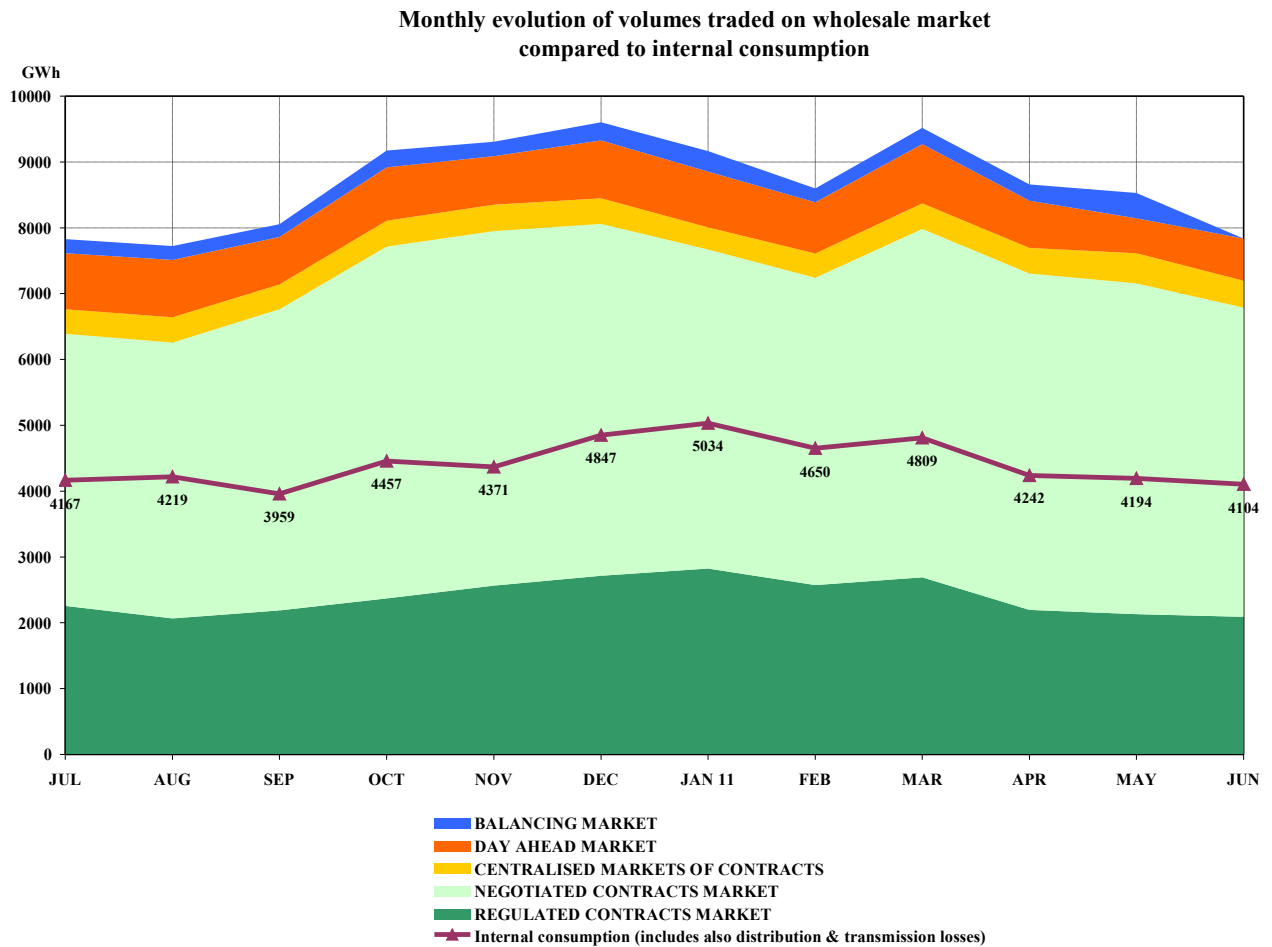
Note: \* Contracts of supply to consumers and contracts of export are not included

\*\* Export volumes correspond to the quantities for which CN Transelectrica SA applied extraction component of transmission tariff for export, which in some cases are different to those reported as traded by participants

\*\*\* Volumes traded on negotiated contracts do not include the quantities resulted from the processing contracts concluded between the fuel suppliers and the generators, as this activity is not subject of ANRE regulations and not comprised within the market participants' reports

The percentage of electricity quantities from the internal consumption (see table from above) offers a dimensional reference for each of the specified markets. Prices include only the injection component of the transmission tariff, in this way being comparable within a month and making possible the comparison with the previous month.

The evolution of the relation between the volumes sold on each market and the estimated internal consumption, during July 2010 – June 2011, is presented below:

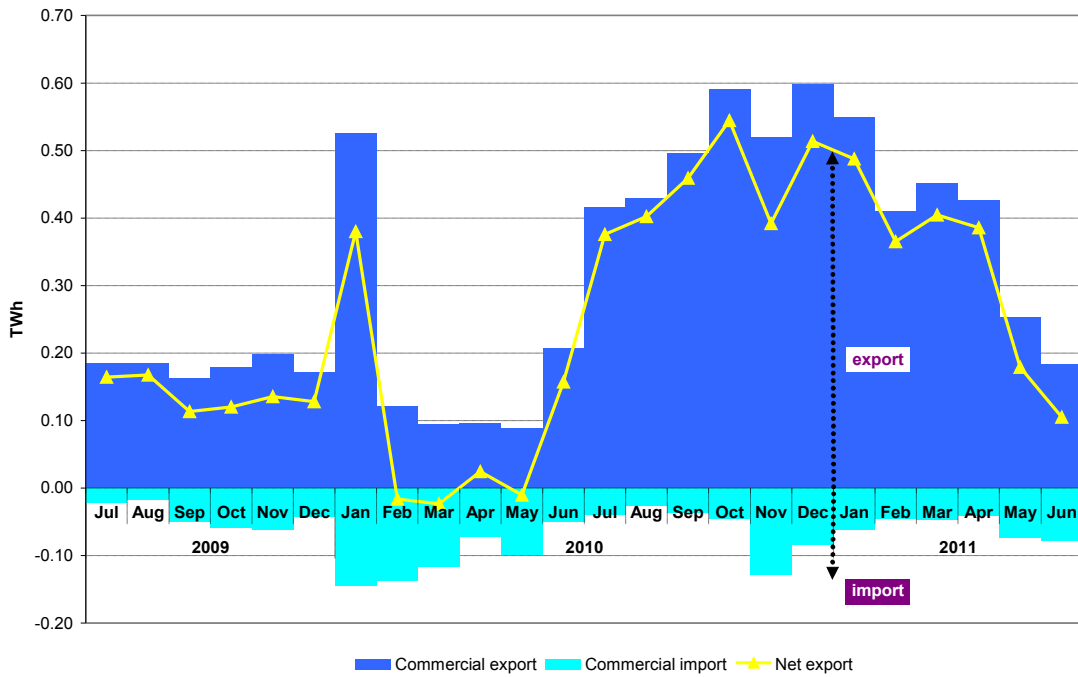


Source: Monthly reports of wholesale market participants, SC Opcom SA and CN Transelectrica SA – processed by MG

Note: In the above graph, the volumes traded on negotiated contracts' market do not include the export trades

The following graph represents the monthly values of commercial export (quantities for which the extraction component of transmission tariff was applied), commercial import (quantities for which the injection component of transmission tariff was applied) and the net export (export minus import) in the last 24 months:

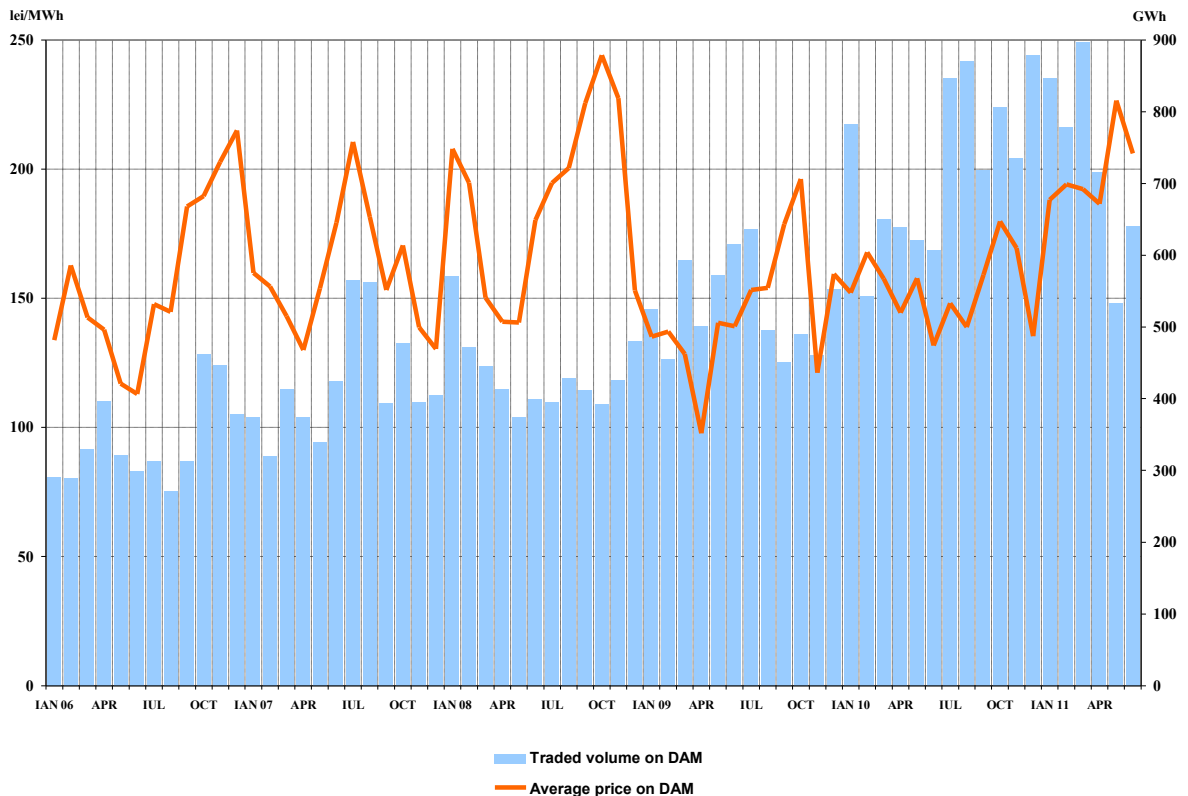
Monthly evolution of export, import and net export of electricity during the last 2 years



Source: Monthly reports of CN Traselectrica SA – processed by MG

The following graph presents the volumes and the monthly average prices on DAM starting with January 2006.

Monthly evolution of the traded volume and average prices on DAM



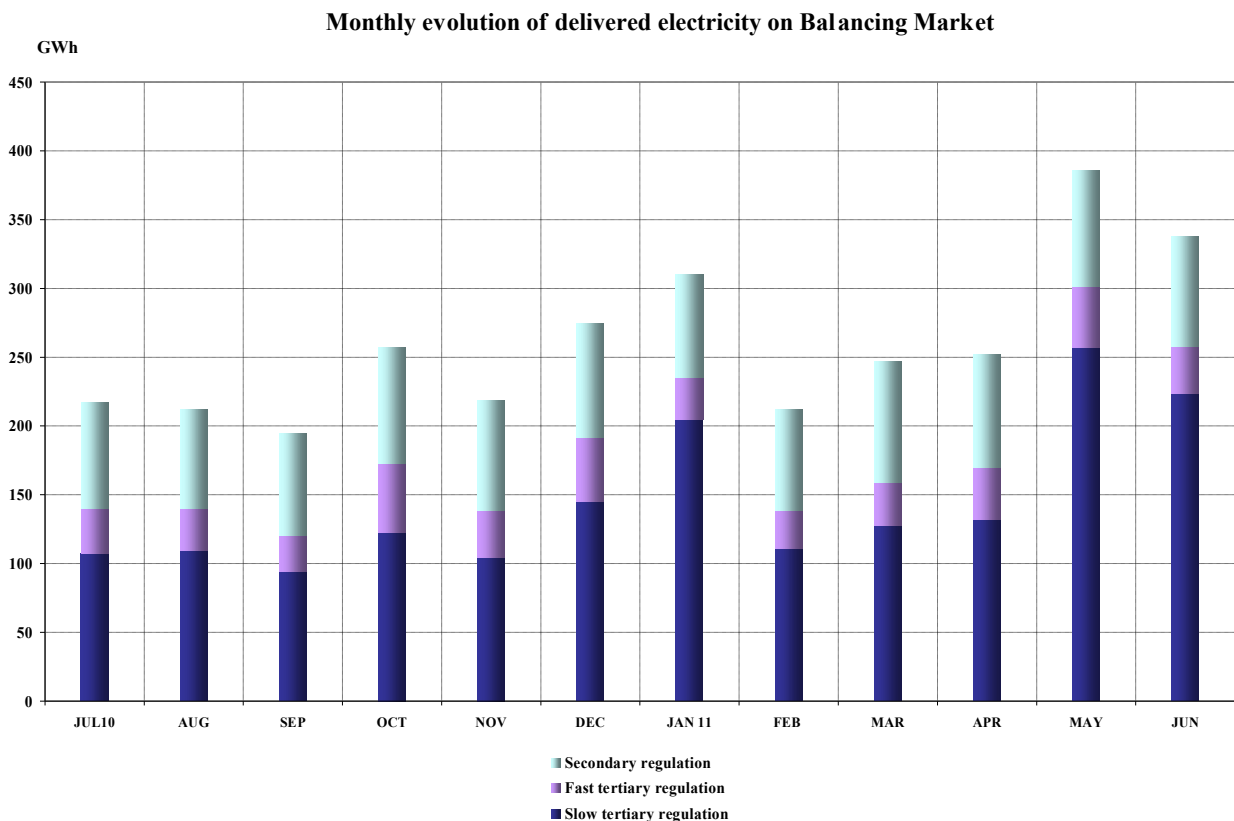
Source: Monthly reports of SC Opcom SA and CN Traselectrica SA – processed by MG

Balancing electricity is determined by the dispatch orders (accepted offers) received by generators. After settlement, the actual electricity delivered by generators on balancing market is determined based on the measured (approved) values; the relation between the accepted and delivered electricity in June 2011 is presented in the following table:

June 2011	Dispatch order (GWh)	Delivered electricity (GWh)	Deviation (%)
<b>Secondary regulation</b>	<b>81</b>	<b>81</b>	
<i>upward</i>	42	42	
<i>downward</i>	38	38	
<b>Fast tertiary regulation</b>	<b>37</b>	<b>34</b>	<b>9</b>
<i>upward</i>	25	23	5
<i>downward</i>	12	11	16
<b>Slow tertiary regulation</b>	<b>238</b>	<b>224</b>	<b>6</b>
<i>upward</i>	193	187	3
<i>downward</i>	45	37	19
<b>TOTAL</b>	<b>356</b>	<b>338</b>	
<i>upward</i>	260	253	
<i>downward</i>	96	86	
<b>INTERNAL CONSUMPTION</b>		<b>4104</b>	
<i>% share of traded volumes from internal consumption</i>		<b>8.2%</b>	

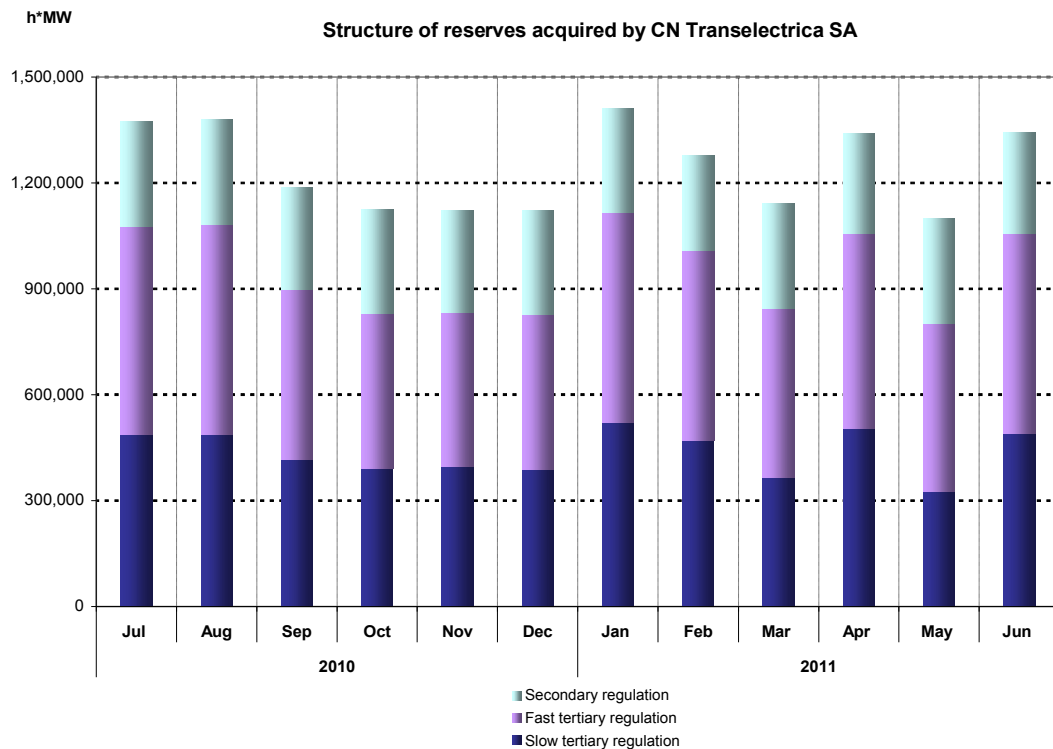
Source: Monthly reports of CN Tranelectrica SA – processed by MG

The structure of balancing electricity delivered in the system on each type of regulation starting from July 2010 is presented in the graph below:



Source: Monthly reports of CN Tranelectrica SA – processed by MG

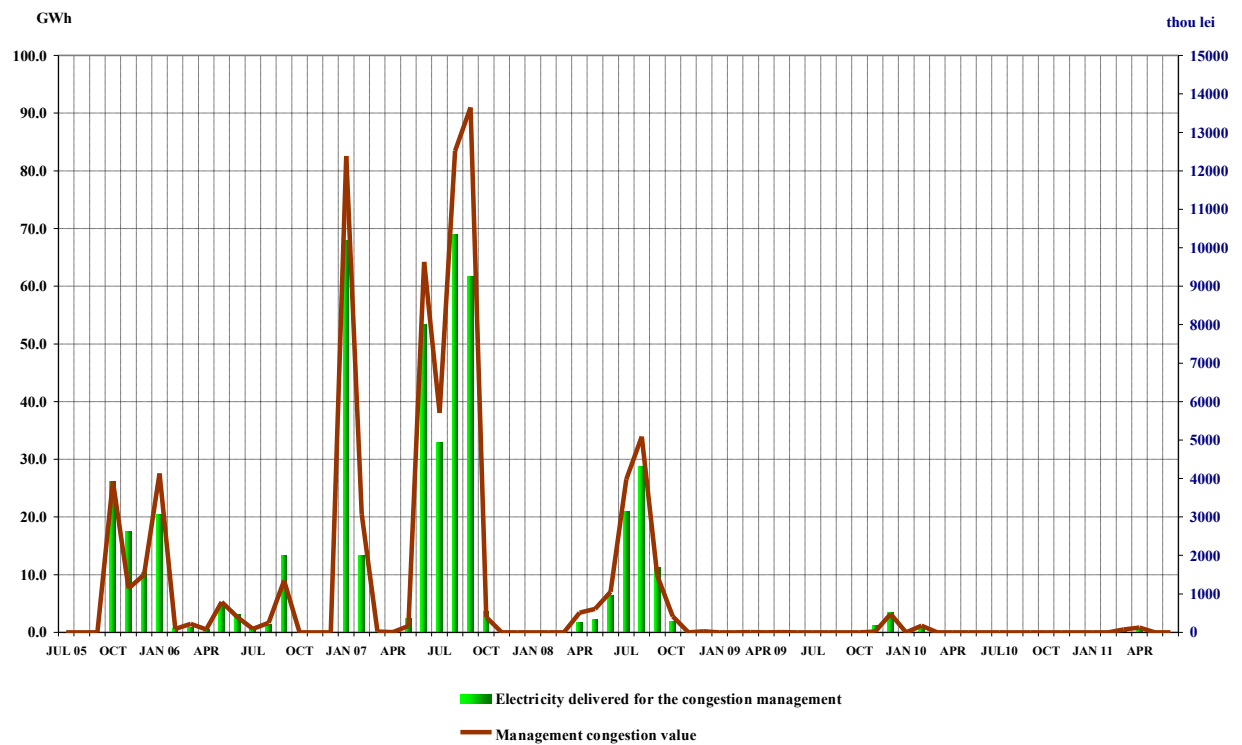
For comparison, the following graph presents the evolution of reserves (ancillary services, i.e. obligations of generators to maintain their contracted capacities available for dispatching/offering on BM) acquired/paid by CN Traselectrica SA starting with July 2010:



Source: Monthly reports of CN Traselectrica SA – processed by MG

The following graph presents the evolution of electricity traded by CN Traselectrica SA on the Balancing Market for covering the electricity used for congestion management (in order to solve the congestions occurred within the transmission grid) and the evolution of the values of these transactions starting with July 2005.

## Monthly evolution of the volume and value of the electricity delivered for the congestion management



Source: Monthly reports of CN Transelectrica SA – processed by MG

## 5. Trading structure on the wholesale electricity market of different participant categories

### Generators

The structure of electricity sales obligations contracted before delivery day by the electricity generators with dispatchable units in June 2011 compared to previous month and June 2010 was the following:

- GWh -

Transaction type	May 2011	June 2011	June 2010
0	1	2	3
Regulated to incumbents, thermal generators	754.03	655.26	870.88
Regulated to incumbents, hydro generator	462.46	384.69	379.83
Regulated to incumbents, nuclear generator	285.48	407.23	360.99
Regulated for distribution losses, thermal generators	206.54	167.57	181.41
Regulated for distribution losses, hydro generator	53.09	29.16	74.03
Regulated for distribution losses, nuclear generator	62.22	96.84	90.02
Regulated for transmission losses, thermal generator	75.55	73.82	72.66
Regulated, to other generators (with return of obligation within a year)	234.13	275.14	203.90
Negotiated, to other generators	246.82	172.58	120.51
Negotiated, to suppliers	1324.58	1227.17	1141.39
Contracts concluded on centralized markets (CMBC, CMBC-NC, RCE)	457.06	411.13	357.39
Supply to consumers (regulated and competitive)	314.44	209.79	189.68
Export	70.75	40.67	86.72
DAM	259.42	339.57	389.39
<b>Total</b>	<b>4806.58</b>	<b>4490.61</b>	<b>4518.79</b>

Source: Monthly reports of generators – processed by MG

### **Suppliers**

In June 2011, 87 companies having as main activity the supply of electricity concluded transactions on the electricity market; from these, 39 suppliers traded electricity exclusively on the wholesale market and 48 suppliers on both retail and wholesale markets (in this category are also included the 7 incumbent suppliers).

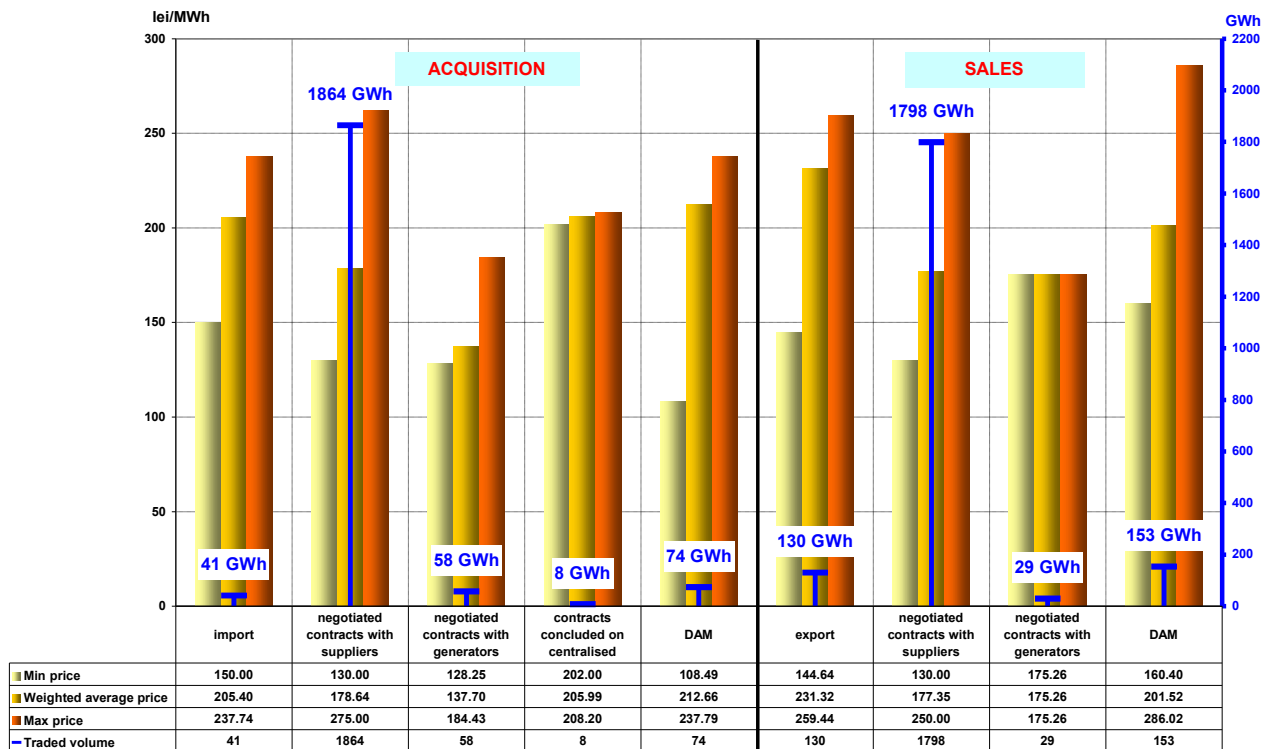
#### Suppliers acting exclusively on WEM

The following table shows the activity for June 2011 compared to June 2010 of the suppliers acting exclusively on WEM, acquisitions and sales being split by categories of markets/participants:

- GWh -

<b>Transactions' structure of suppliers acting exclusively on WEM</b>	<b>June 2010</b>	<b>June 2011</b>
<b>Acquisitions</b>		
Import	19.87	40.69
Negotiated contracts with suppliers	1290.69	1863.86
Negotiated contracts with generators	0.00	57.59
Contracts concluded on centralized markets	18.60	7.52
DAM	82.53	73.83
<b>Sales</b>		
Export	86.22	130.13
Negotiated contracts with suppliers	1273.19	1798.43
Negotiated contracts with generators	0.00	28.80
DAM	79.77	153.19

In addition to the data from the table above, the following graph presents the minimum, average and maximum actual prices by categories of transactions completed by the suppliers acting exclusively on WEM (traders) in June 2011:

Transactions concluded by suppliers acting exclusively on WEM  
 - JUNE 2011 -


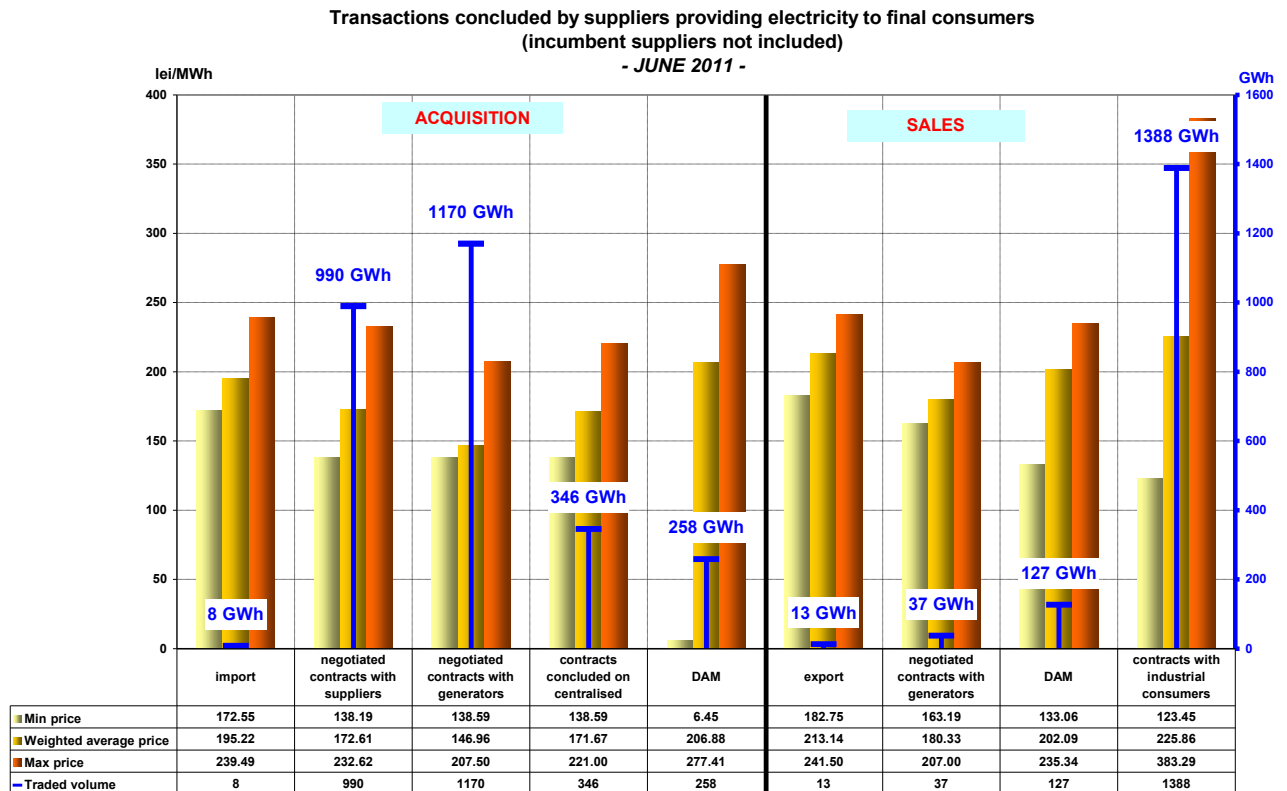
Source: Monthly reports of the competitive suppliers – processed by MG

Active suppliers on REM (the incumbent suppliers are not included)

The following table presents aggregated information on transactions volume and structure for suppliers providing electricity to final consumers, on the competitive market, for June 2011 and June 2010.

	- GWh -	
Transactions' structure of suppliers providing electricity to final consumers (the incumbent suppliers are not included)	June 2010	June 2011
<b>Acquisitions</b>		
Import	5.89	7.70
Negotiated contracts with suppliers	919.79	989.84
Negotiated contracts with generators	1141.39	1169.58
Contracts concluded on centralized markets	306.58	346.01
DAM	304.20	258.28
<b>Sales</b>		
Export	33.39	12.67
Negotiated contracts with suppliers	1239.18	1373.89
Negotiated contracts with generators	33.39	37.00
Contracts concluded on centralized markets	0.00	0.00
DAM	82.37	126.75
Final consumers	1289.62	1388.01

In addition to the data from the table above, the following graph presents the sales structure and the minimum, average and maximum actual prices by categories of transactions completed by suppliers providing electricity to final consumers in June 2011:



Source: Monthly reports of the competitive suppliers – processed by MG

### Incumbent suppliers

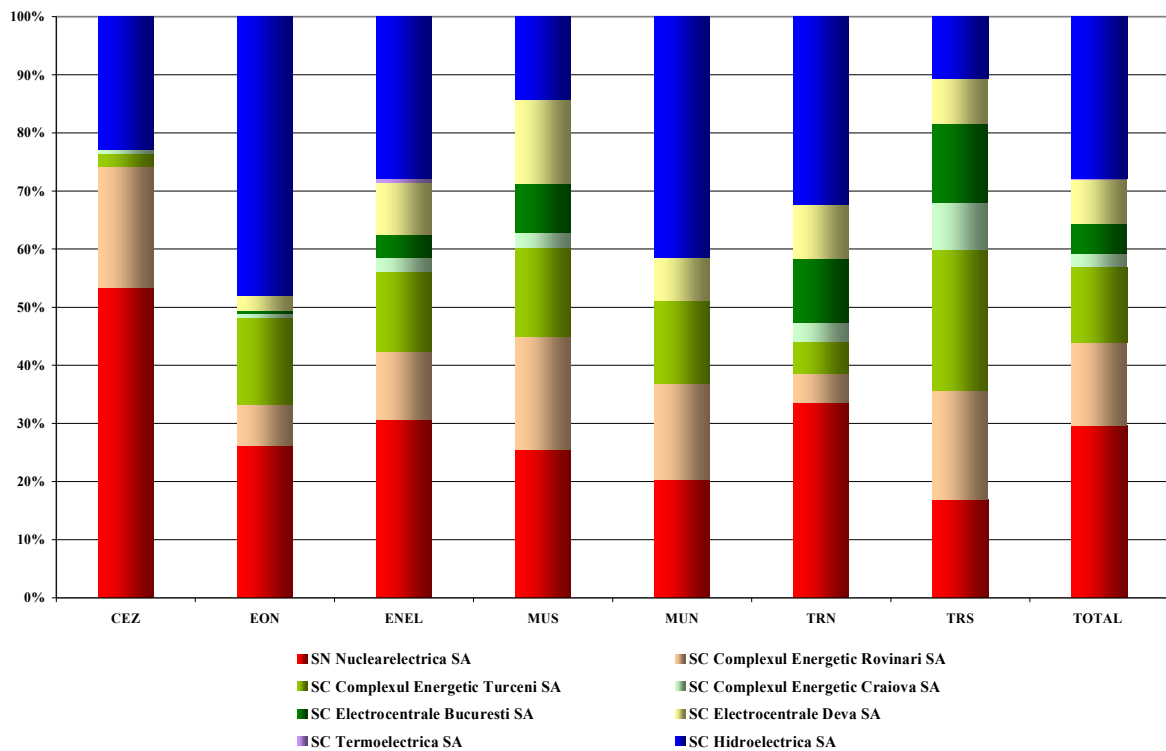
Electricity acquisition structure of incumbent suppliers (before the delivery day), for supplying the regulated market consumers, is presented in the table below, for June 2011 compared to the situation of June 2010:

- GWh -

Acquisition structure of incumbent suppliers for regulated REM component	June 2010	June 2011
Regulated contracts with generators	1655.72	1493.08
Negotiated contracts	47.52	1.60
Contracts concluded on centralized markets	0.00	0.00
DAM	41.54	41.12

The structure of the electricity purchased by the incumbent suppliers from the main generators on regulated contracts is presented in the following graph for June 2011:

Electricity acquisition from main generators, on regulated contracts, of incumbent suppliers for delivering electricity to final consumers on regulated market  
JUNE 2011



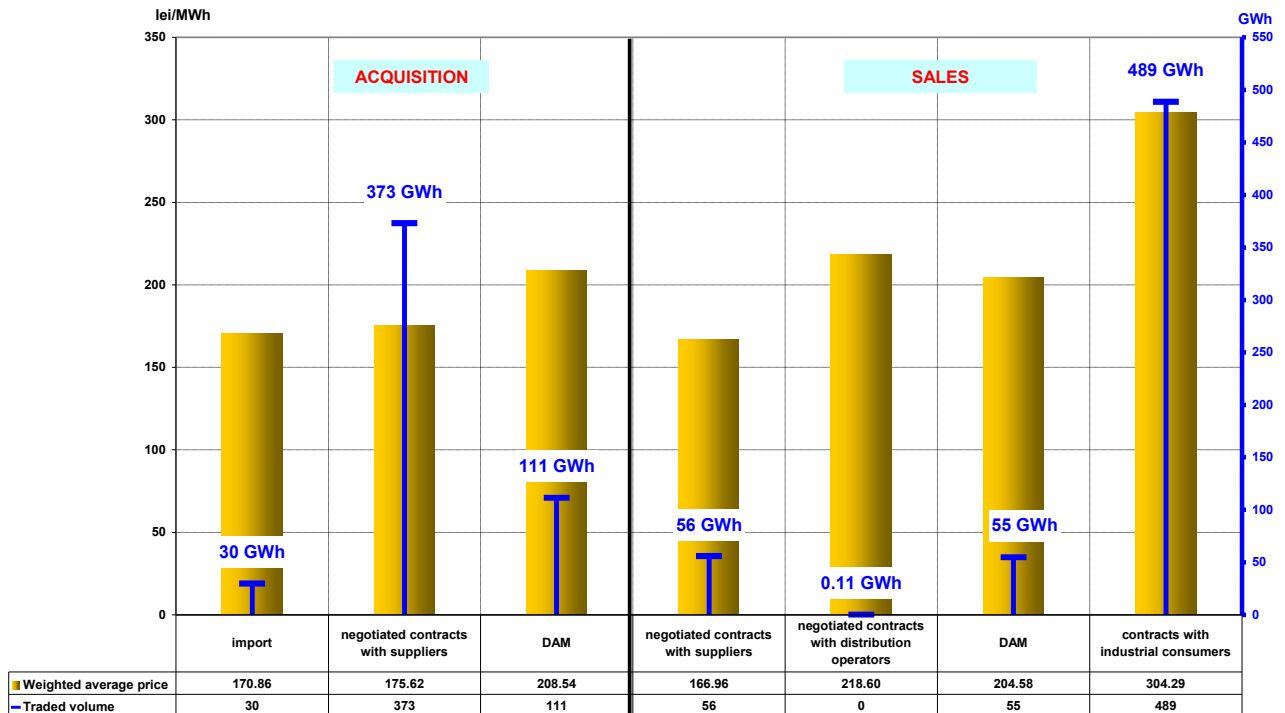
Source: Monthly reports of the incumbent suppliers – processed by MG

Likewise to the situation presented for the regulated REM, the table below presents the structure of incumbent suppliers' transactions (before the delivery day), corresponding to the competitive REM (energy supplied at negotiated prices to the consumers who renounced to regulated tariffs) for June 2011 compared to June 2010:

Transactions' structure of incumbent suppliers for competitive REM component	- GWh -	
	June 2010	June 2011
<b>Acquisitions</b>		
Import	23.25	29.86
Negotiated contracts with suppliers	304.24	372.84
Negotiated contracts with generators	0.00	0.00
Contracts concluded on centralized markets	0.00	0.00
DAM	113.46	111.42
<b>Sales</b>		
Negotiated contracts with suppliers	50.03	55.95
Negotiated contracts with distributors	0.81	0.11
DAM	5.25	54.87
Final consumers	393.04	488.55

The structure by types of sources/destinations of the traded volumes combined with the actual average prices of the incumbent suppliers corresponding to the competitive segment of REM is presented in the following graph for June 2011:

**Transaction concluded by incumbent suppliers providing electricity  
on the competitive component of REM  
- JUNE 2011 -**



*Source: Monthly reports of the incumbent suppliers – processed by MG*

### Main distribution operators

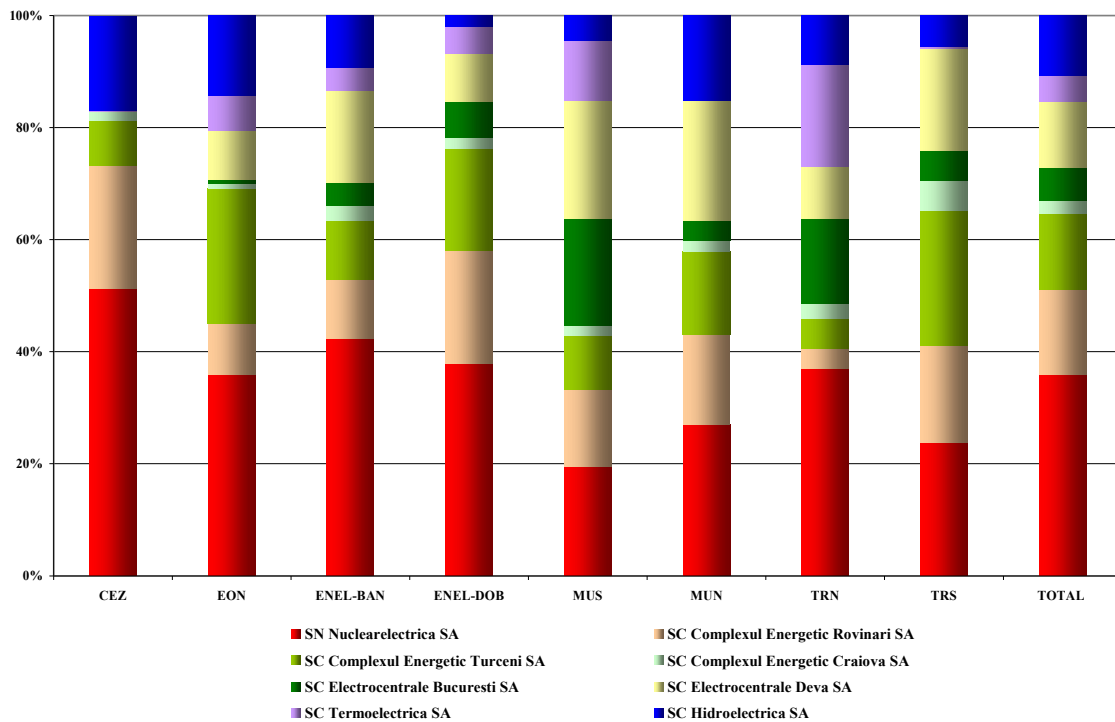
The following table shows the electricity acquisition structure of main distribution operators (before the delivery day), for covering the distribution network losses, for June 2011 compared to June 2010:

- GWh -

Acquisition structure	June 2010	June 2011
Regulated contracts with generators	345.46	296.01
Negotiated contracts with suppliers	0.81	0.11
Contracts concluded on centralized markets	0.00	0.00
DAM	33.56	57.17

The electricity purchased by the 8 distribution operators from the main generators on regulated contracts, for covering their network losses is presented in detail in the following graph, for June 2011:

Electricity acquisition of distribution operators from main generators, on regulated contracts, for covering the distribution losses  
June 2011



Source: Monthly reports of the distribution operators – processed by MG

## 6. Concentration indicators on the wholesale electricity market and its components

According to the economic theory and the EU documents, the following market concentration indicators may be defined:

- HHI, Herfindahl-Hirschman Index = sum of square market shares (%) of participants:

The indicator values signify:

HHI < 1000	non-concentrated market;
1000 < HHI < 1800	moderately concentrated market;
HHI > 1800	highly concentrated market.

- C3 = sum of market shares of the main three participants in the market:

The indicator values signify:

40% < C3 < 70%	moderately concentrated market;
C3 > 70%	highly concentrated market.

These concentration indicators may be defined for the wholesale market (electricity market or ancillary services market) or for each of its components where direct competition takes place.

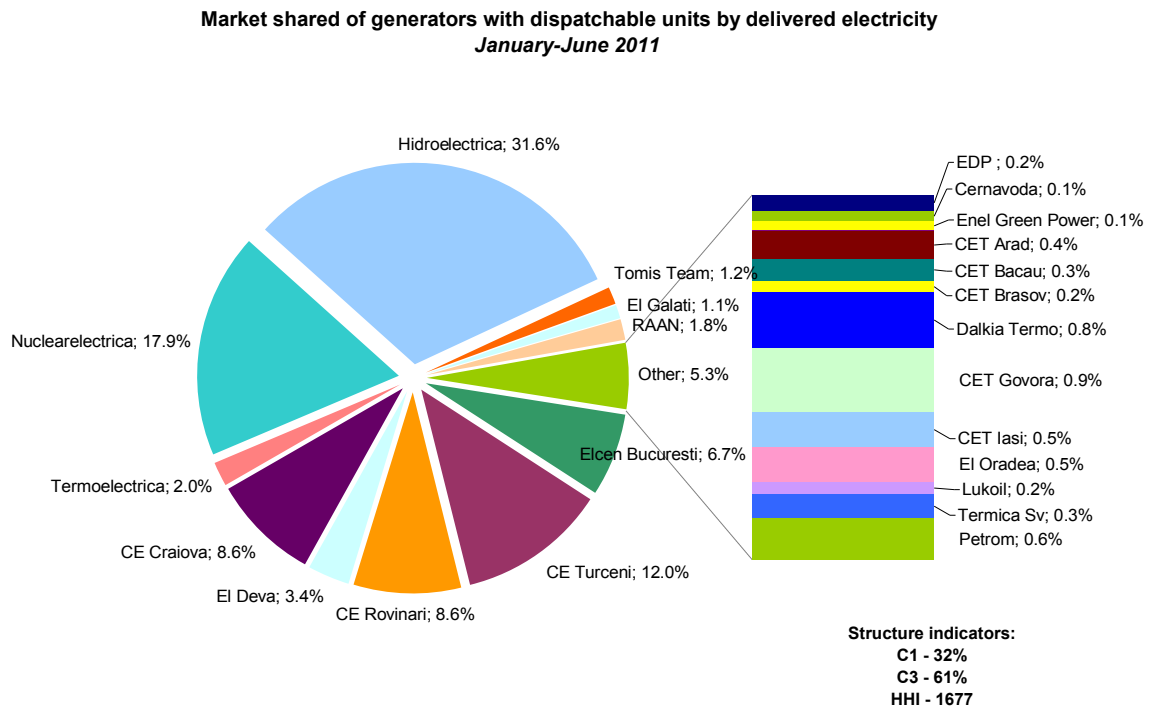
### Concentration indicators and market shares of the electricity generators

The market structure regarding the electricity generation offers an initial basis for analyzing the possible competitiveness level of the electricity market.

The following table presents the concentration indicators of electricity generation for June 2011, calculated based on electricity delivered into the networks by the generators with dispatchable units.

Concentration indicators - June 2011 -	C1 (%)	C3 (%)	HHI
Value	28	63.4	1671

The market shares of the electricity generators, taking into account all components of the wholesale electricity market, are presented in the following graph, for the first semester from 2011. These market shares are calculated based on the electricity delivered into networks.



Source: Monthly reports of generators – processed by MG

A component of the WEM where direct competition between generators exists is the Balancing Market (BM). The values of concentration indicators on this market are determined based on effectively delivered electricity, for each type of regulation defined within the Commercial Code, and they are presented in the following table for June 2011:

Structure/concentration indicators of BM - JUNE2011 -	Regulation					
	Secondary		Fast tertiary		Slow tertiary	
	upward	downward	upward	downward	upward	downward
C1 - % -	63	57	68	38	35	39
C3 - % -	88	84	80	92	68	90
HHI	4356	3702	4725	3078	2051	3142

The competition between generators is also present when speaking about the ensuring the reserves necessary for security of supply in the NES. Due to the fact that generators have different levels of capabilities for ensuring this type of service, this market has an important regulated component. The relationship between regulated and competitive components on the Ancillary Services Market (ASM) as well as the main concentration indicators on each type of reserve (secondary, fast tertiary and slow tertiary) are presented in the following table for June 2011:

Concentration indicators on ASM - June 2011 -		Secondary reserve	Fast tertiary reserve	Slow tertiary reserve
regulated component	contracted quantity (h*MW)	288000	462600	344500
	C1 (%)	55.0	81.6	37.3
	C3 (%)	87.5	89.6	81.5
competitive component	contracted quantity (h*MW)	0	102390	146000
	C1 (%)	-	91.4	57.1
	C3 (%)	-	98.2	100
	HHI	-	8384	4950

### Concentration Indexes for the Day Ahead Market

Day Ahead Market (DAM) is a voluntary market, opened both for buying and selling for all types of market participants: generators, suppliers, grid operators, under applicable regulations.

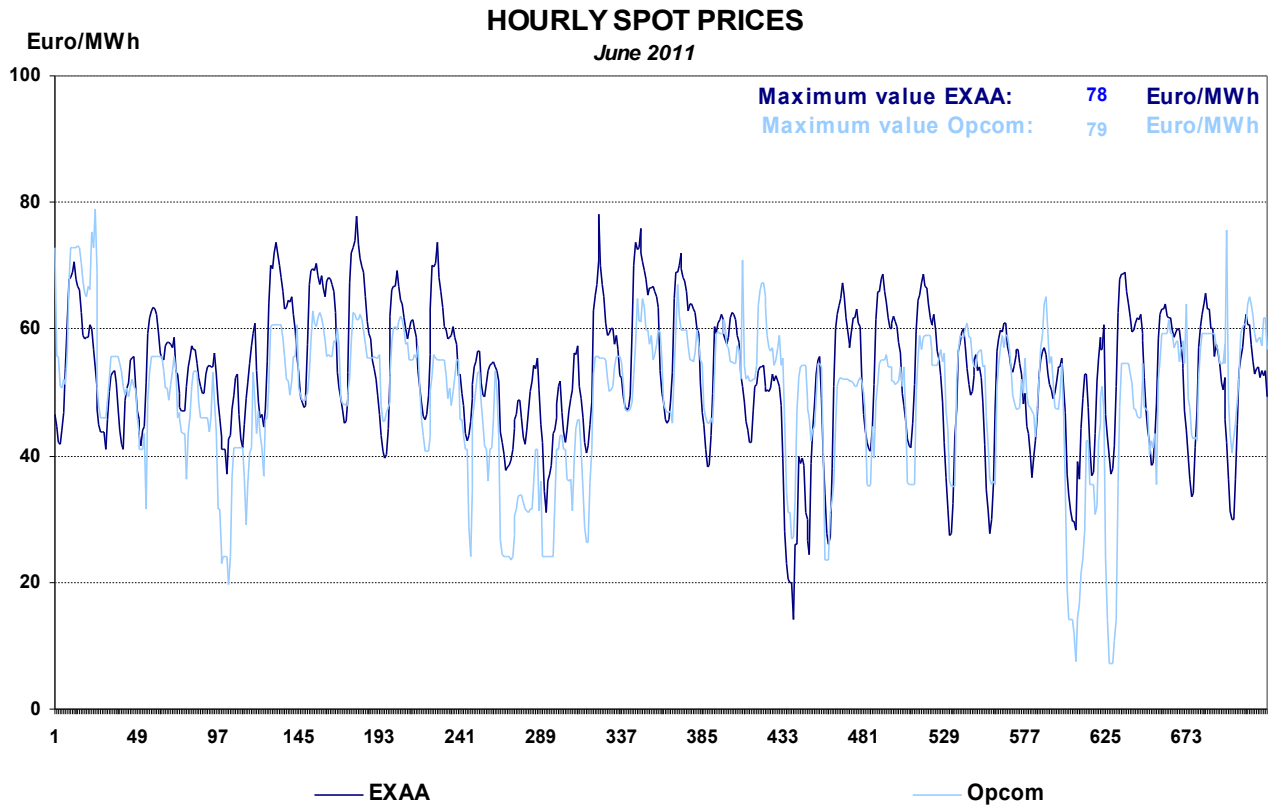
The concentration indicators on DAM reflects the level of competition between sellers and between buyers respectively, the dynamics of both influencing the price level. The following table presents C1, C3 and HHI for buying and for selling side of DAM in June 2011, based on quantities traded by participants on this market.

Concentration indicators on DAM - June 2011 -	C1 (%)	C3 (%)	HHI
Buying transactions	12.8	32.7	595
Selling transactions	16.1	35.2	673

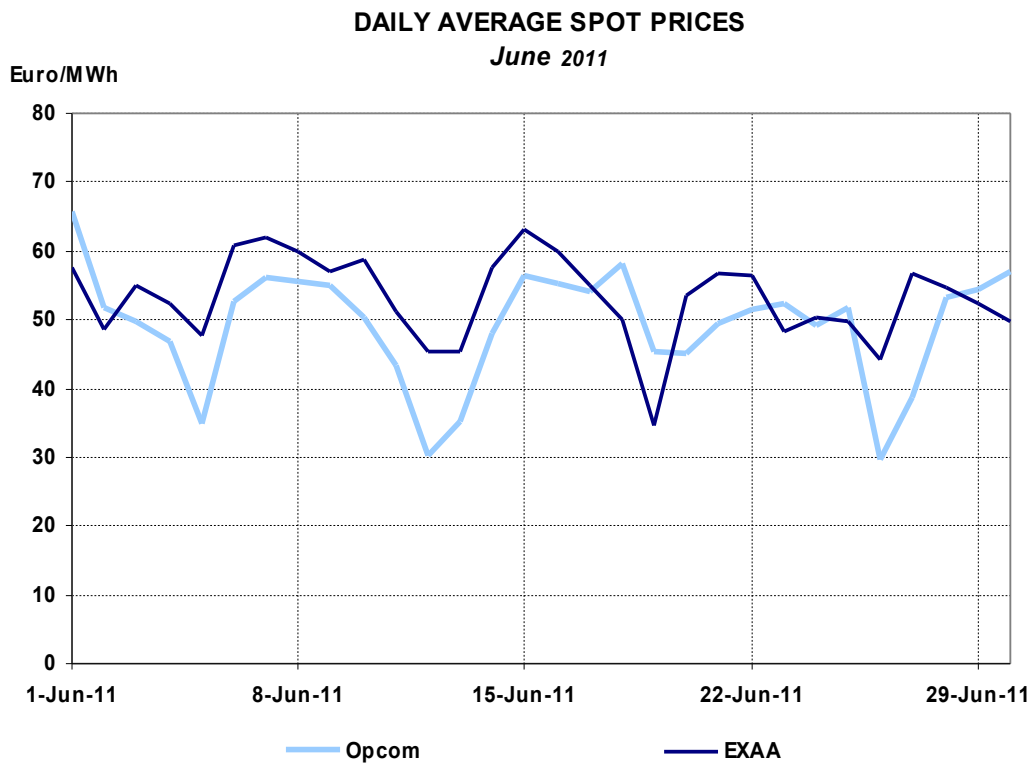
### **7. Price evolution on wholesale electricity market**

SC Opcom SA is the administrator of DAM. The MCP on DAM represents a reference value for the prices on the bilateral contracts. The evolutions of hourly and daily average prices on DAM in June 2011 are presented in the following graphs, along with the prices on EXXA.

For comparison with prices on the European power exchanges, the spot price on SC Opcom SA is denominated in EUR, taking into consideration the daily exchange rates Euro/leu communicated by the National Bank of Romania.

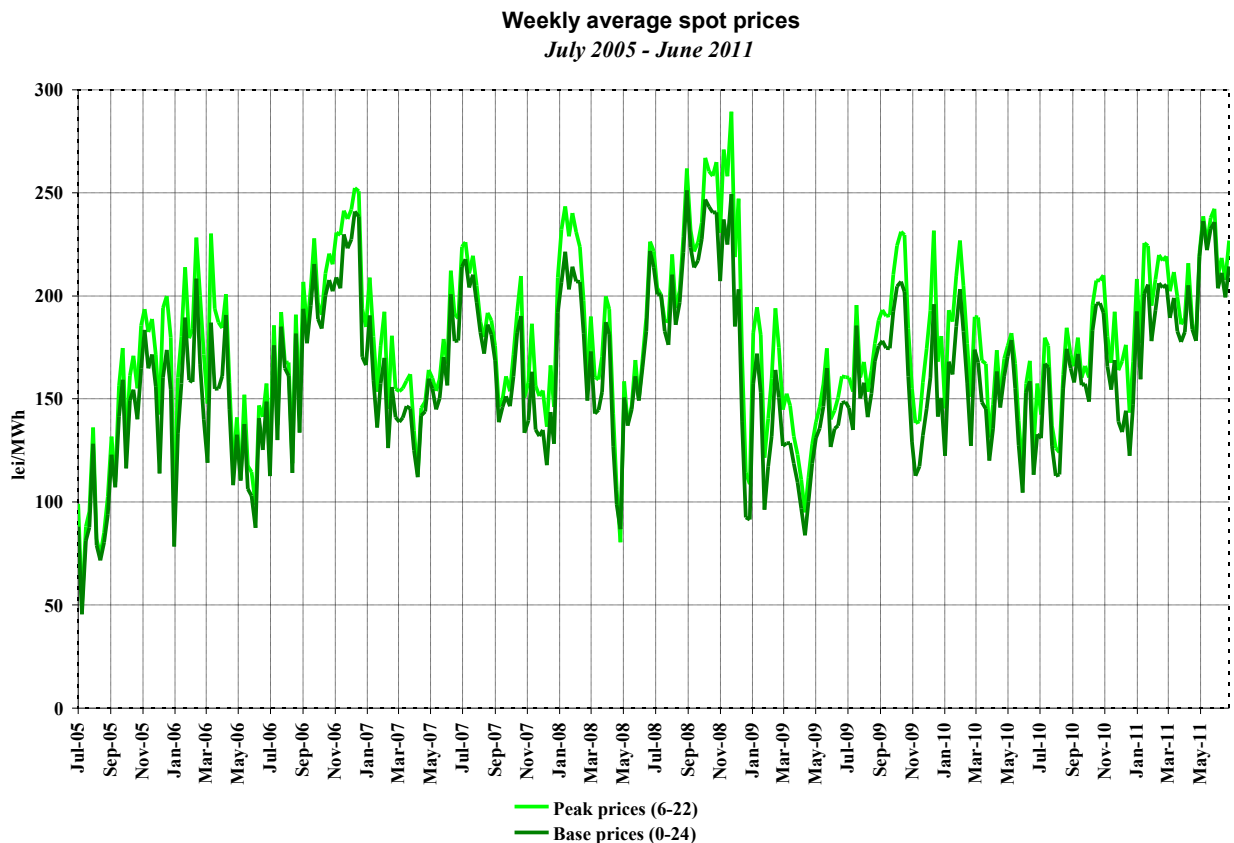


Source: Daily reports of SC Opcom SA and published data of EXAA  
– processed by MG



Source: Daily reports of SC Opcom SA and published data of EXAA  
– processed by MG

The following graph presents the evolution of weekly average spot prices starting with July 2005:

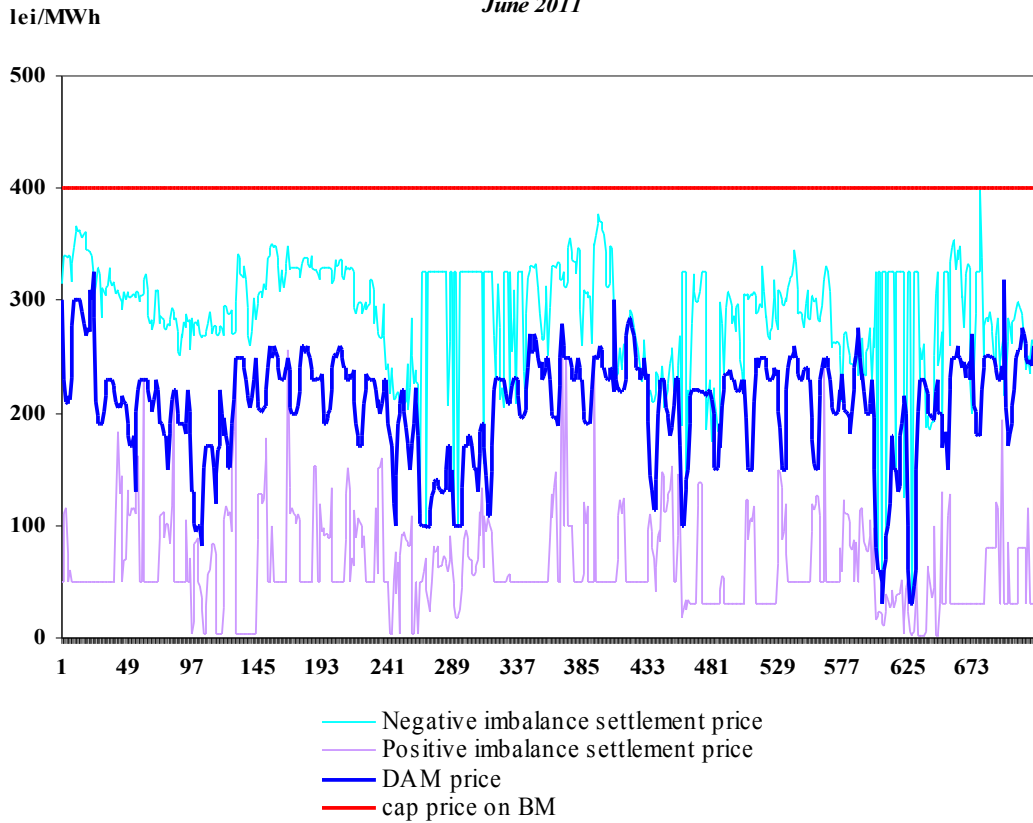


*Source: Daily reports of SC Opcom SA – processed by MG*

In order to cover the differences between planned/contracted amounts of consumption/generation and the real time consumption, the system operator (CN Transelectrica SA) operates the BM by buying or "selling" electricity at prices determined by the merit order of dispatchable generators' offers. The participants who generate the imbalances, grouped in BRPs, have to bear the imbalances costs. For the negative imbalances, they have to pay the settlement price resulting from the upward bids accepted on the BM, while for the positive imbalances they receive the settlement price resulting from the downward bids accepted on the BM.

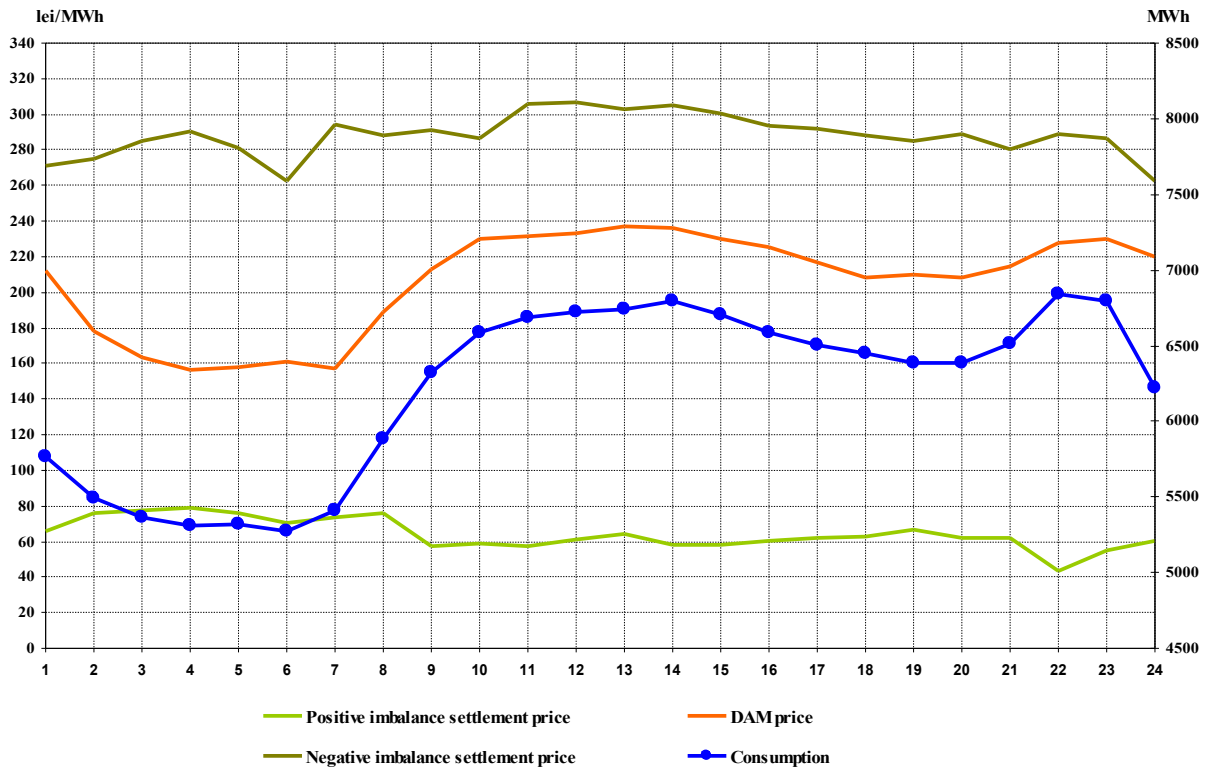
The settlement prices (MCP on DAM, negative imbalance settlement price and positive imbalance settlement price) are represented on the same graph, showing the two markets correlation degree. In the first graph the prices are expressed in hourly values, in the second graph in hourly average values compared to internal consumption, and in the last graph in average monthly values.

### Hourly settlement prices June 2011



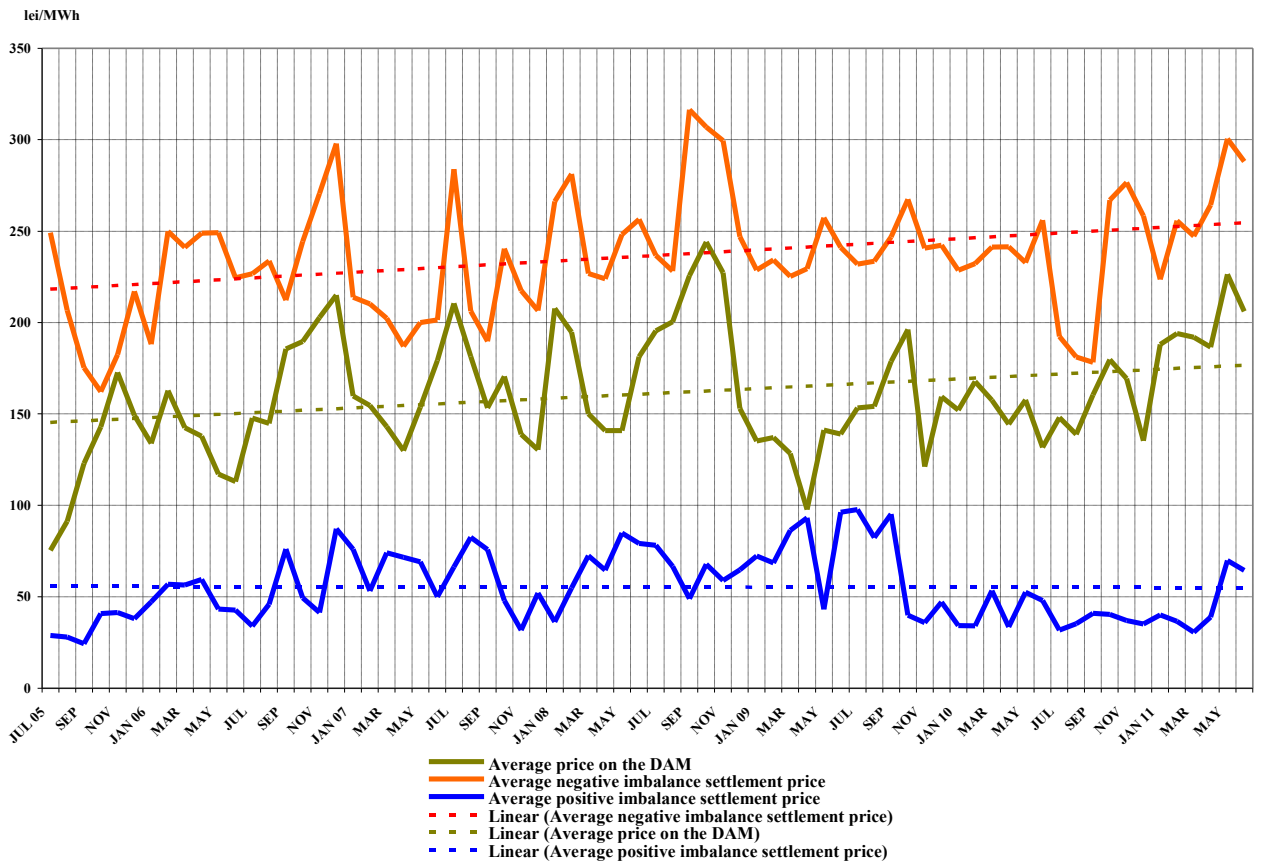
Source: Daily/monthly reports of SC Opcom SA – processed by MG

### Hourly average settlement prices and internal consumption June 2011



Source: Monthly reports of SC Opcom SA and CN Transelectrica SA – processed by MG

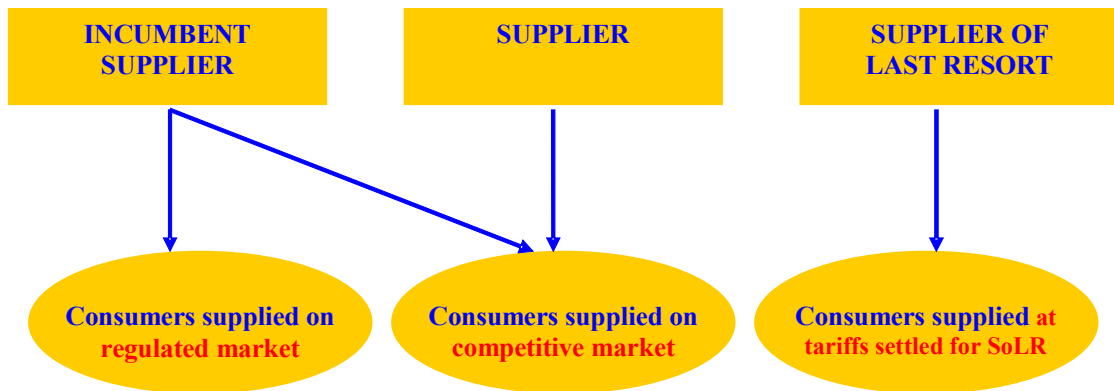
Monthly average prices on DAM and BM  
July 2005 - June 2011



Source: Monthly/daily reports of SC Opcom SA – processed by MG

### III. RETAIL ELECTRICITY MARKET

#### 1. Structure of the retail electricity market



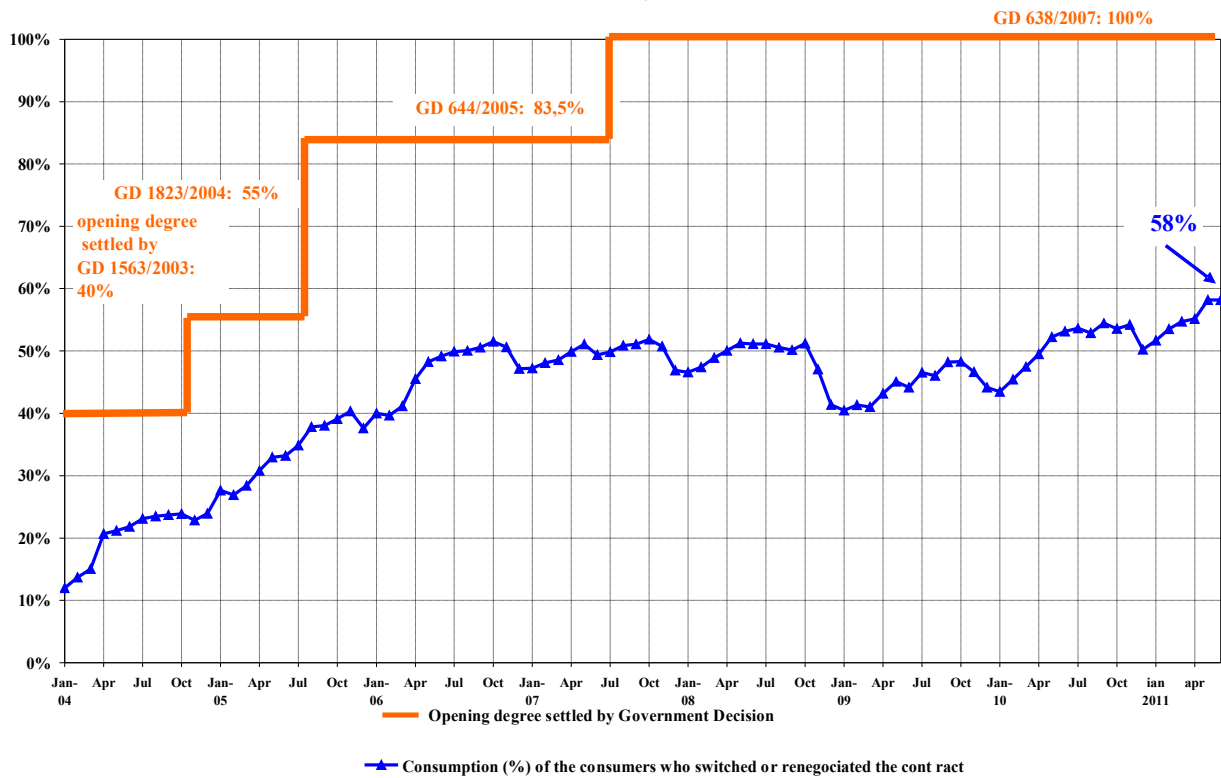
#### 2. Steps in the opening process of the electricity market

Government Decision	Opening degree %	Annual consumption threshold GWh/year
No. 122/2000, published in O.G. 77/21.02.2000	10	100
No. 982/2000, published in O.G. 529/27.10.2000	15	100
No. 1272/2001, published in O.G. 832/21.12.2001	25	40
No. 48/2002, published in O.G. 71/31.01.2002	33	40
No. 1563/2003, published in O.G. 22/12.01.2004	40	20
No. 1823/2004, published in O.G. 1062/16.11.2004	55	1
No. 644/2005, published in O.G. 684/29.07.2005	83.5	-
No. 638/2007, published in O.G. 427/27.06.2007	100	-

#### 3. Electricity market opening degree

The following graph contains the quota of the consumption from total consumption, of the consumers who switched their supplier or renegotiated their contracts with the suppliers operating on the regulated market, during January 2004 – June 2011. The values presented are cumulated from the beginning of the opening process and are presented monthly:

Opening degree evolution for electricity market  
January 2004 - June 2011



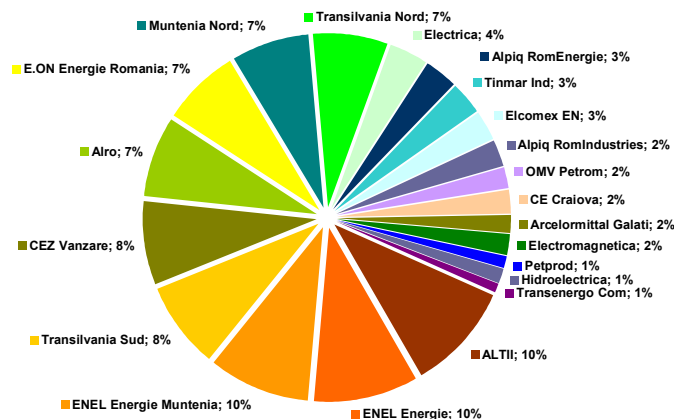
Source: Monthly reports of the final consumers' suppliers – processed by MG

4. Market shares of the electricity suppliers

In the following three graphs there are presented the market shares of electricity suppliers on the retail market, calculated:

- a) for all suppliers (including the incumbents) on REM – based on the electricity supplied to the consumers on regulated tariffs as well as to the consumers who switched their supplier or renegotiated their contract;

Market shares of suppliers for final consumers  
- January - June 2011 -

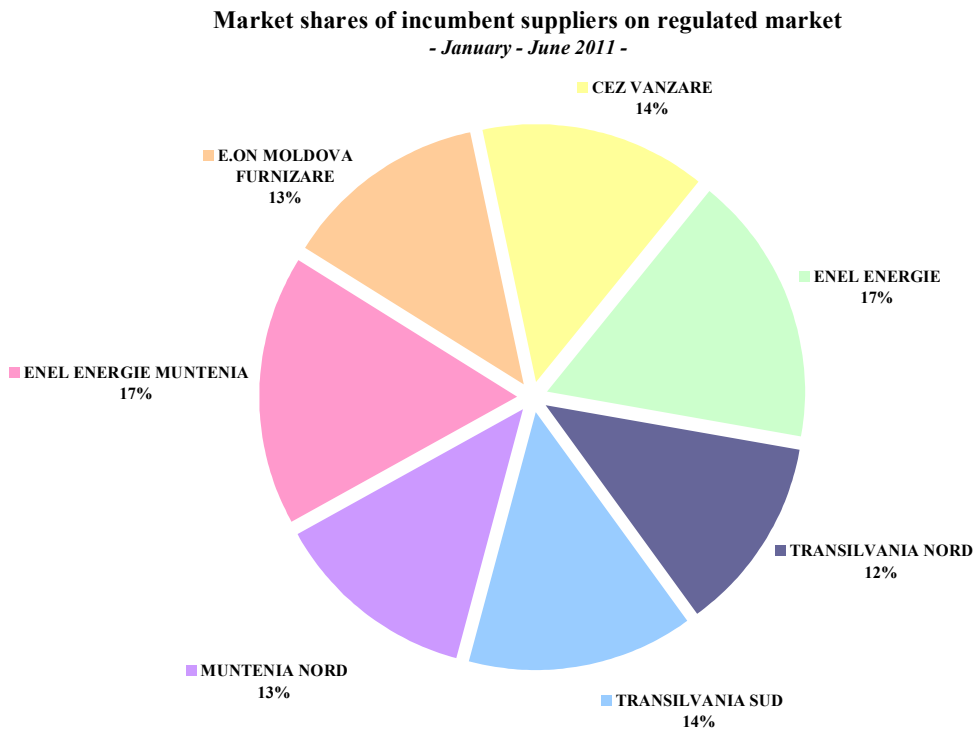


Final consumption: 22965 GWh

Category "Altii" includes 37 suppliers with individual market share less than 1%

Source: Monthly reports of the incumbent suppliers – processed by MG

- b) for incumbent suppliers - based on the electricity supplied to the consumers at regulated tariffs,



Consumption of consumers supplied at regulated tariffs: 10290 GWh

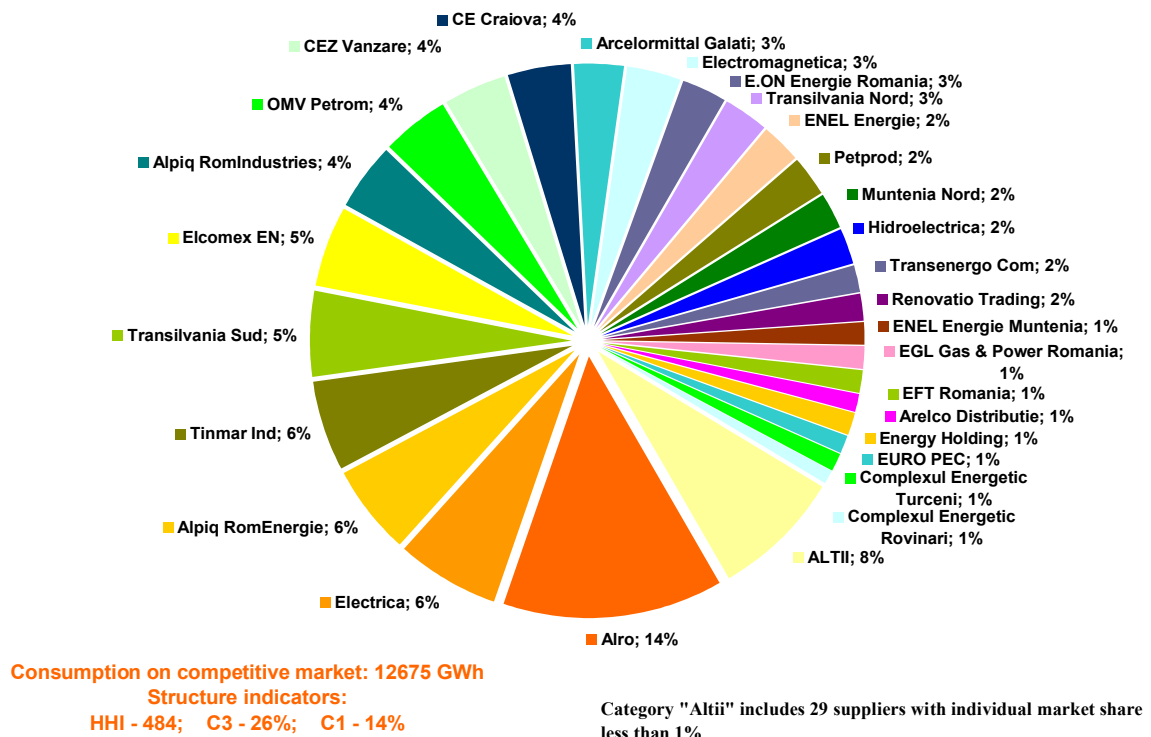
Source: Monthly reports of the incumbent suppliers – processed by MG

and

- c) for all suppliers (including the incumbents) based on the electricity supplied for the consumers at negotiated prices on competitive component of REM:

**Market shares of suppliers delivering electricity on the competitive market**

- January - June 2011 -



Source: Monthly reports of the competitive suppliers – processed by MG

The values of market indicators were calculated without taking into consideration the dominance principle. The delivered electricity used for determining the market share of each supplier comprises the self-consumption of the largest industrial consumer which owns a supply license and based on it acquired its electricity from the WEM as a competitive supplier.

The electricity supplied to the final consumers used for calculating the market share of every supplier includes also the self-consumption of that particular supplier (e.g. consumers with supply license who buy electricity for themselves from WEM as competitive suppliers).

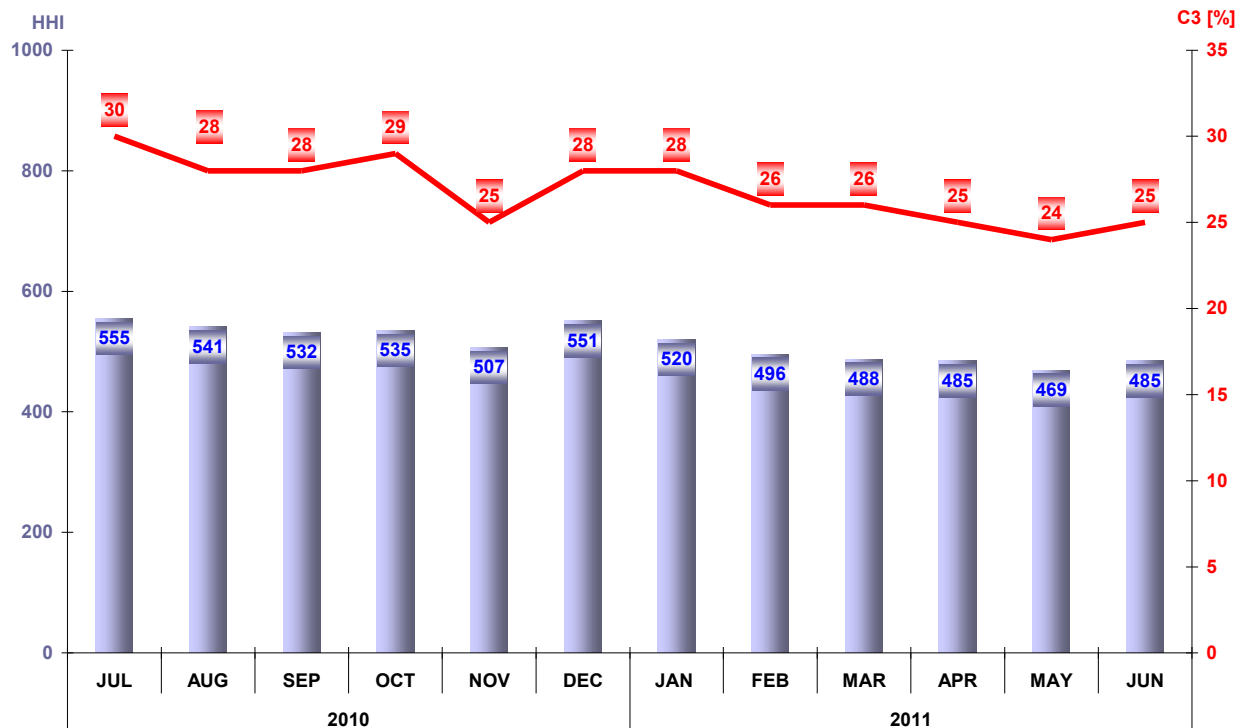
The analysis of the competitive suppliers' activity on the competitive REM component compared to their activity on the WEM is developed based on the weight of the electricity sold to final consumers in total electricity sales. The table below presents the number of suppliers acting on the REM, grouped into categories of sales weight during June 2011:

Number of suppliers	Share of sales to final consumers from total sales transactions			
	100%	75% - 100%	50% - 75%	<50%
<b>Competitive</b>	7	11	10	13
<b>Incumbent</b>	1	5	0	1

### 5. Concentration indicators of the competitive retail electricity market

The monthly evolution of concentration indicators (C3, HHI) determined on the competitive component of the REM is presented for July 2010 – June 2011 in the following graph:

Herfindahl-Hirschman (HHI) and Concentration Ratio of the main three suppliers delivering electricity on competitive market (C3)



Source: Monthly reports of the suppliers – processed by MG

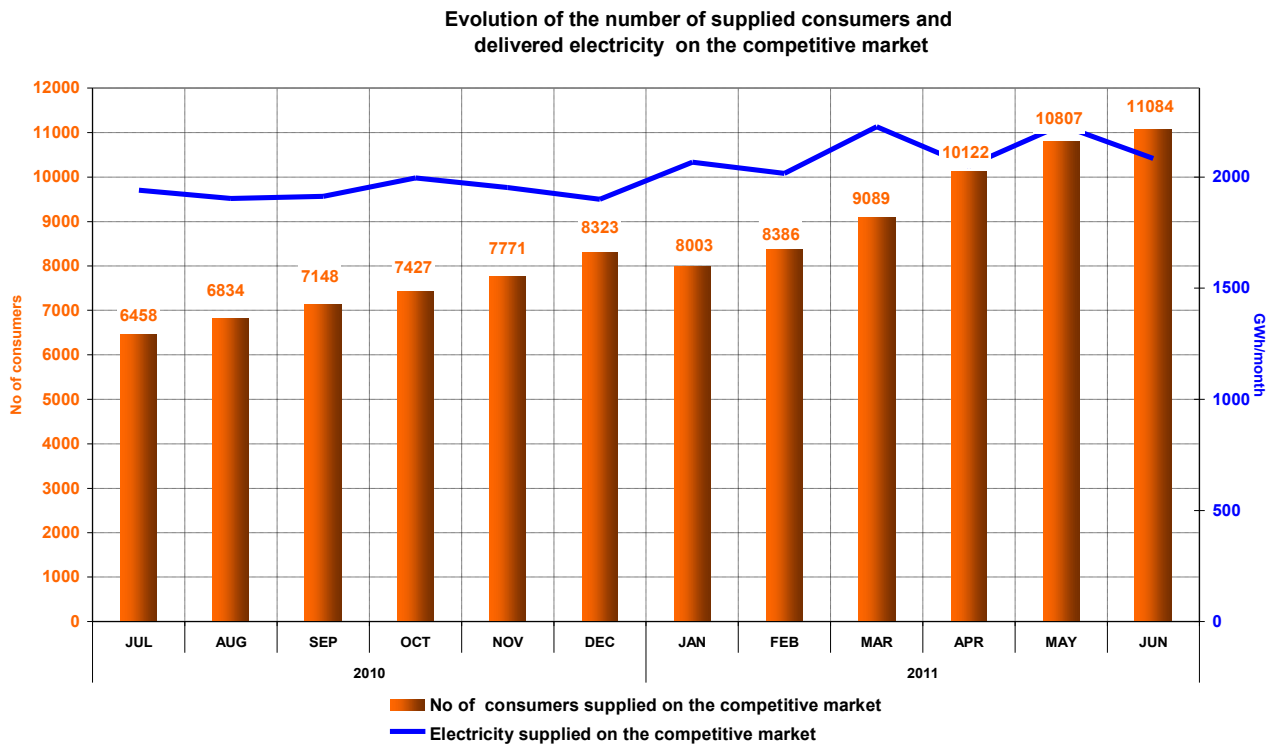
The table below shows the values of structure indicators of competitive component of REM for and the number of active suppliers in June 2011, calculated for each consumer category as defined by the European Council Directive no. 90/377/EEC, modified by the Commission Decision no. 2007/394/EC:

Indicators - June 2011	Consumer category							Total REM
	IA	IB	IC	ID	IE	IF	Other	
C1 - % -	48	21	23	16	11	24	30	14
C3 - % -	83	51	39	34	30	55	50	25
HHI	3136	1135	921	678	620	1331	1302	485
Consumption - GWh -	21.7	107	187	414	259	175	920	2084
No. of SUPPLIERS	22	44	47	41	26	12	18	57
No. of incumbent suppliers	7	7	7	7	6	3	1	7
No. of competitive suppliers	12	32	33	29	19	9	11	41
No. of producers	3	5	7	5	1	0	6	9

## 6. Evolution of consumers' number and of electricity delivered

Number of consumers supplied on the competitive market is presented as total value from the beginning of the market opening process; for June 2011 this number is split into categories, according to the provisions of the European Council Directive no. 90/377/EC, with subsequent modifications. The table below presents the bands of consumption of each category of consumers:

Industrial end-user	Annual electricity consumption (MWh)	
	Lowest	Highest
IA		<20
IB	20	<500
IC	500	<2000
ID	2000	<20000
IE	20000	<70000
IF	70000	<=150000
Others	>150000	

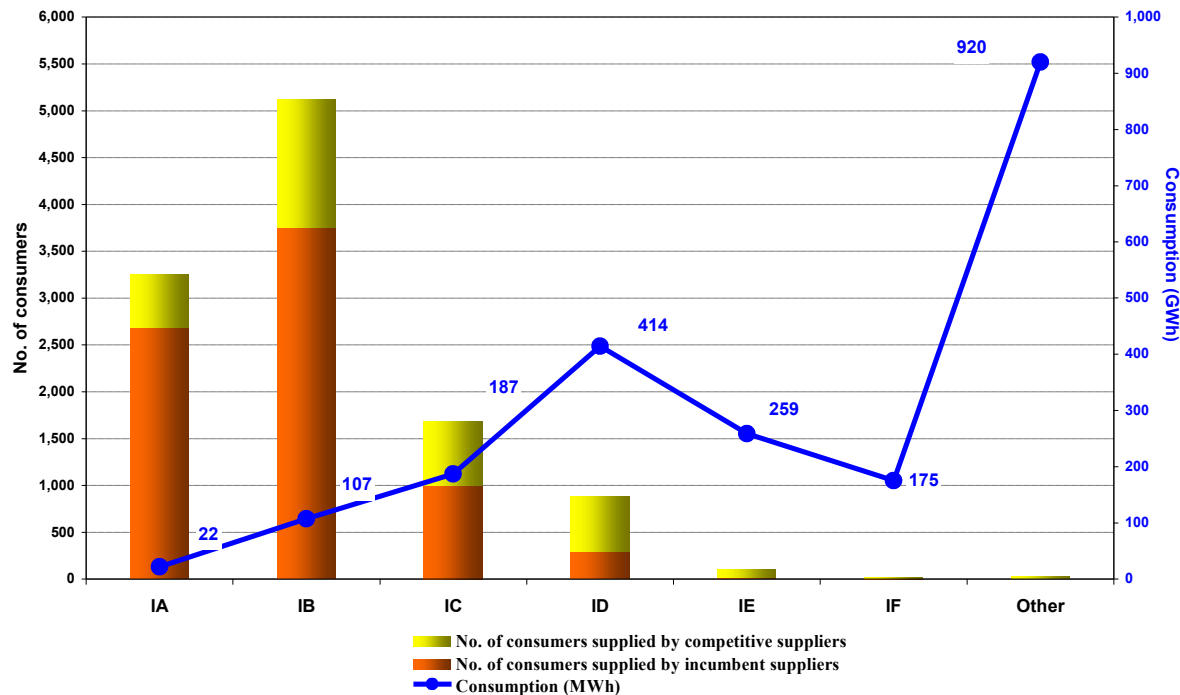


Source: Monthly reports of the competitive suppliers – processed by MG

NOTES: 1. Starting with January 2011, the data are also comprising the electricity delivered by 3 main dispatchable producers (with a self-generation exceeding 200 GWh in 2010) to their own consumption places - others than the generation site

2. There has been identified one supplier which had sent wrong figures corresponding to January-April 2011. Following the MG warnings, they reported the accurate figures, which are visible in the hereabove graph.

Number of consumers supplied on competitive market and the consumption of each category of consumers  
- June 2011 -

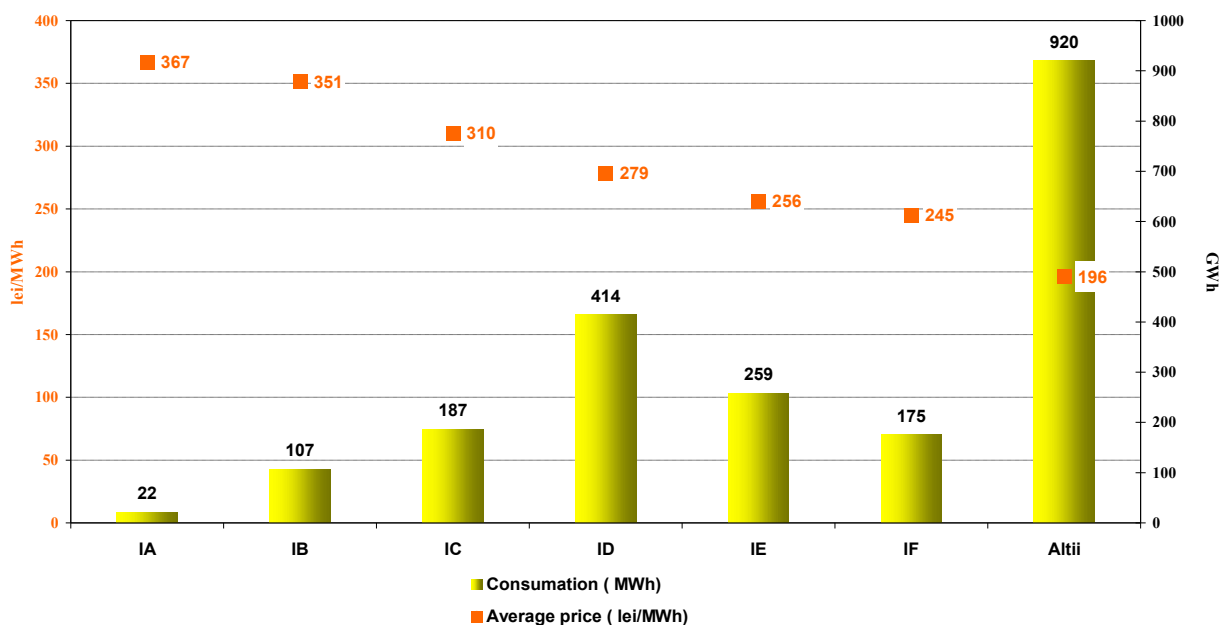


Source: Monthly reports of the suppliers – processed by MG

### 7. Average selling prices of consumers supplied on the competitive market

The following graph presents the average selling prices of consumers supplied on the competitive market, based on the structure defined according to the European Council Directive no. 90/377/EC, with the subsequent modifications.

Average price and energy consumption on types of consumers applied on competitive market  
- June 2011 -



Source: Monthly reports of the competitive suppliers – processed by MG

Note: The average selling price on each category was calculated as weighted average of prices applied by suppliers with quantities supplied, according to the provisions of the European Directive. The average prices do

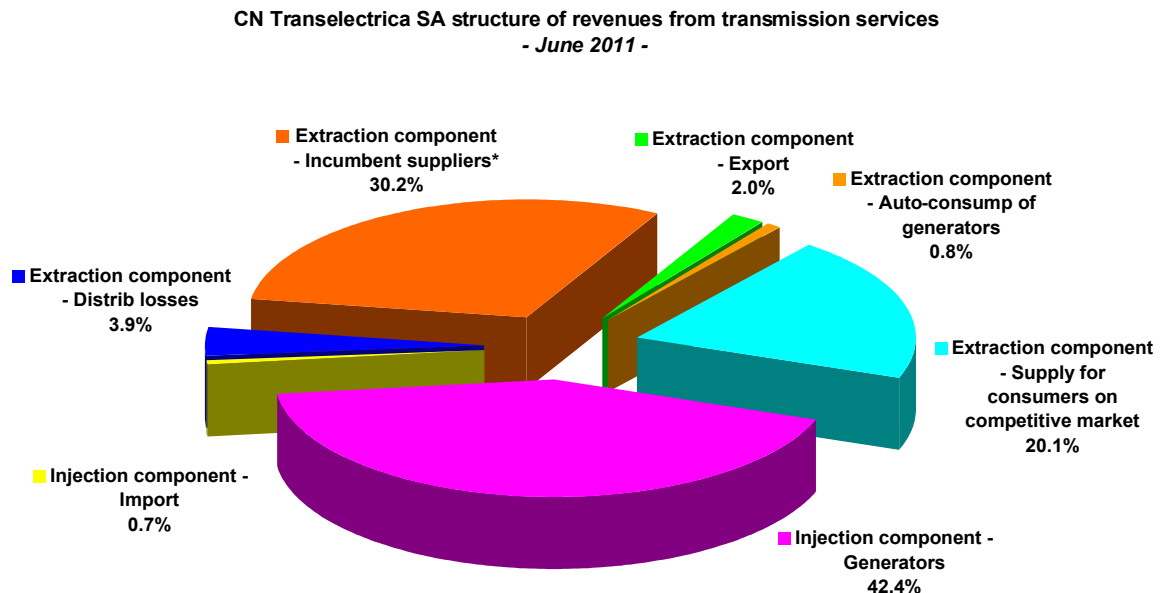
not include VAT, excise or other taxes but include the supplied services (injection and extraction components of transmission, system services, distribution, market settlement, imbalances, BRP aggregated taxes, metering). Splitting consumers into categories was based on their annual consumption forecast, according to the provisions of above mentioned Directive.

#### IV. TRANSMISSION AND SYSTEM OPERATOR C.N. TRANSELECTRICA S.A.

CN Transelectrica SA performs the electricity transmission service at regulated tariffs, which have two components:

- injection component (TG), aimed to determine an optimum geographic positioning of the new power units;
- extraction component (TL), as an incentive for an equilibrate positioning into the territory of the consumers.

The following graph presents the structure of CN Transelectrica SA revenues from performing the transmission services and reflects the structure of its clients benefiting from this type of service in June 2011.

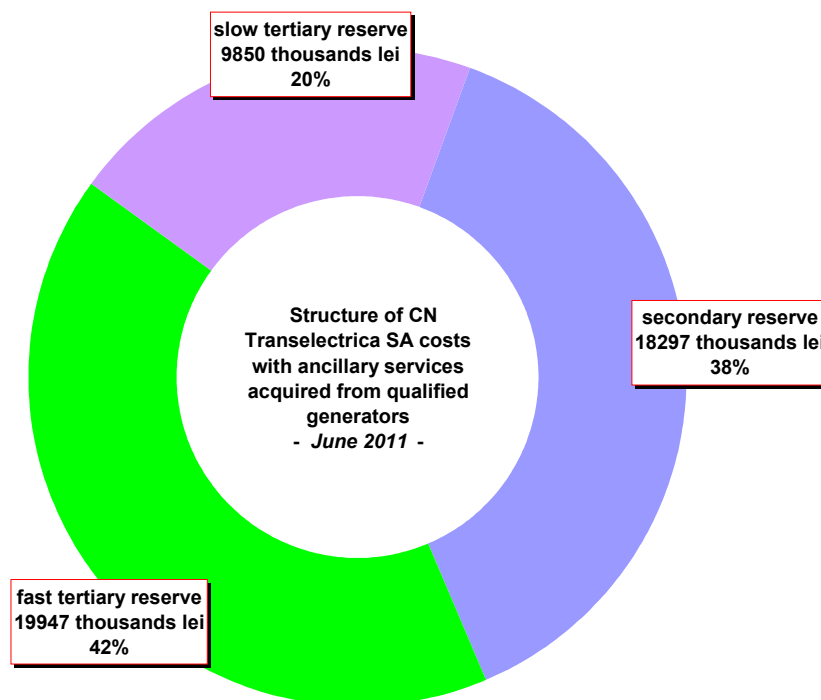


\* referring to all their activity as well as the distribution losses for one distribution operator

Source: Monthly reports of CN Transelectrica SA – processed by MG

In order to perform the system operator tasks, CN Transelectrica SA assesses and contracts reserves (ancillary services) from qualified generators, which are integrated on BM. The ancillary services which may be used are reserves for secondary, fast tertiary, slow tertiary regulation and reactive energy. With the implementation of the support scheme for high efficiency cogeneration from April 2011, the slow tertiary reserve from cogeneration has been eliminated.

The following graph presents the costs of ancillary services CN Transelectrica SA had to pay in June 2011. In order to cover these costs and its own operating costs, TSO applies a regulated tariff for system services.



Source: Monthly reports of CN Transelectrica SA – processed by MG

## V. EVOLUTION OF MARKET RULES IN JUNE 2011

In June 2011, ANRE issued the followings Orders and Decisions with respect to the wholesale and retail electricity market:

- Order no. 28/22.06.2011 for nominating the default suppliers of electricity during 2011, July 1st – 2012, June 30th;
- Order no.31/30.06.2011 for modifying the Annex of the Regulation concerning the organized framework for the trading of bilateral contracts for electricity, approved by Order no. 6/2011; a couple of articles within the Standard contract were modified in order to permit the distribution and transmission operators to buy electricity from the centralised market for electricity bilateral contracts;
- Order no.32/30.06.2011 for approving the Regulation with regard to functioning and organization of Intra-day market; within the present Order there also has been approved the Action Plan for launching, extending and evolution of Intra-day market for 2011-2012;
- Decision no. 1583/22.06.2011 for approving the quantities produced in high efficiency cogeneration which benefits from bonus scheme in May 2011.

## VI. EXPLANATIONS AND ABBREVIATION

### 1. Explanations

- *Self-consumption of generators* – in the graph regarding the revenues of CN Transelectrica SA, the self-consumption exclusively represents the generators consumption at consumption places other than the generation sites.
- *Internal consumption* represents the electricity covered by the wholesale market participants and calculated as *Delivered electricity + Import – Export*.
- *Consumption of consumers on regulated market* represents the consumption of consumers supplied at regulated tariffs by the incumbent suppliers.

- *Consumption of consumers on competitive market* represents the consumption of consumers supplied at negotiated prices.
- *Fuel consumption* represents the fuel consumed for generating electricity and heat.
- *Electricity delivered into the grid* includes also the own consumption of auto-generators such as RAAN and OMV Petrom together with the electricity sold by the generators through direct lines or consumed by themselves at other consumption sites.
- *Competitive supplier* represents, within the present document, the supplier which is active on the competitive retail market.

## 2. Abbreviation

- MG – Monitoring Group
- EEX – European Energy Exchange – Leipzig, Germany, [www.eex.de](http://www.eex.de)
- EXAA – Energy Exchange Austria, [www.exaa.at](http://www.exaa.at)
- DAM – Day Ahead Market
- BM – Balancing Market
- ASM – Ancillary Services Market
- MCP – Market Clearing Price
- BRP – Balancing Responsible Party
- TG/TL – injection / extraction component of the transmission tariff
- CMBC – centralised market of bilateral contracts
- CMBC-CN – centralised market for partially standardised bilateral contracts with continuous negotiation
- NES – National Energy System
- WEM – wholesale electricity market
- REM – retail electricity market
- RCE – Romanian Commodities Exchange