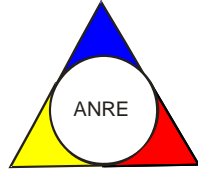




ROMANIAN ENERGY REGULATORY AUTHORITY
GENERAL DIRECTION OF ELECTRICITY MARKET



**REPORT ON RESULTS OF MONITORING THE
ROMANIAN ELECTRICITY MARKET
APRIL 2016**

- This document represents an unauthorised translation of the Romanian document -

ANRE makes all the necessary efforts to present within the here above mentioned document, as accurately and concisely as possible, the data based on the legal entities reports. This document published by ANRE is for information purpose only. ANRE is not and will not be under any circumstances legal responsible for any inadvertences regarding the information presented within the document or for the improper way the information is used

TABLE OF CONTENTS

I.	MAIN EVENTS IN THE DEVELOPMENT OF THE ROMANIAN ELECTRICITY MARKET.....	3
II.	WHOLESALE ELECTRICITY MARKET	4
1.	Structure of the wholesale electricity market.....	4
2.	Participants on the wholesale electricity market	5
3.	Generation structure of National Energy System on resources types	7
4.	Transactions' structure on the wholesale electricity market.....	9
5.	Trading structure on the wholesale electricity market of different participant categories	15
	Generators	15
	Suppliers	16
	Main distribution operators.....	21
6.	Concentration indicators on the wholesale electricity market and its components....	23
7.	Price evolution on wholesale electricity market.....	25
III.	RETAIL ELECTRICITY MARKET.....	30
1.	Structure of the retail electricity market.....	30
2.	Electricity market opening degree	30
3.	Market shares of the electricity suppliers.....	31
4.	Concentration indicators of the competitive retail electricity market.....	34
5.	Evolution of customers' number and of electricity delivered.....	35
6.	Average selling prices of customers supplied on the competitive market	36
IV.	TRANSMISSION AND SYSTEM OPERATOR CNTEE TRANSELECTRICA S.A.	37
V.	EVOLUTION OF MARKET RULES IN JUNE 2016.....	38
VI.	EXPLANATIONS AND ABBREVIATION	38

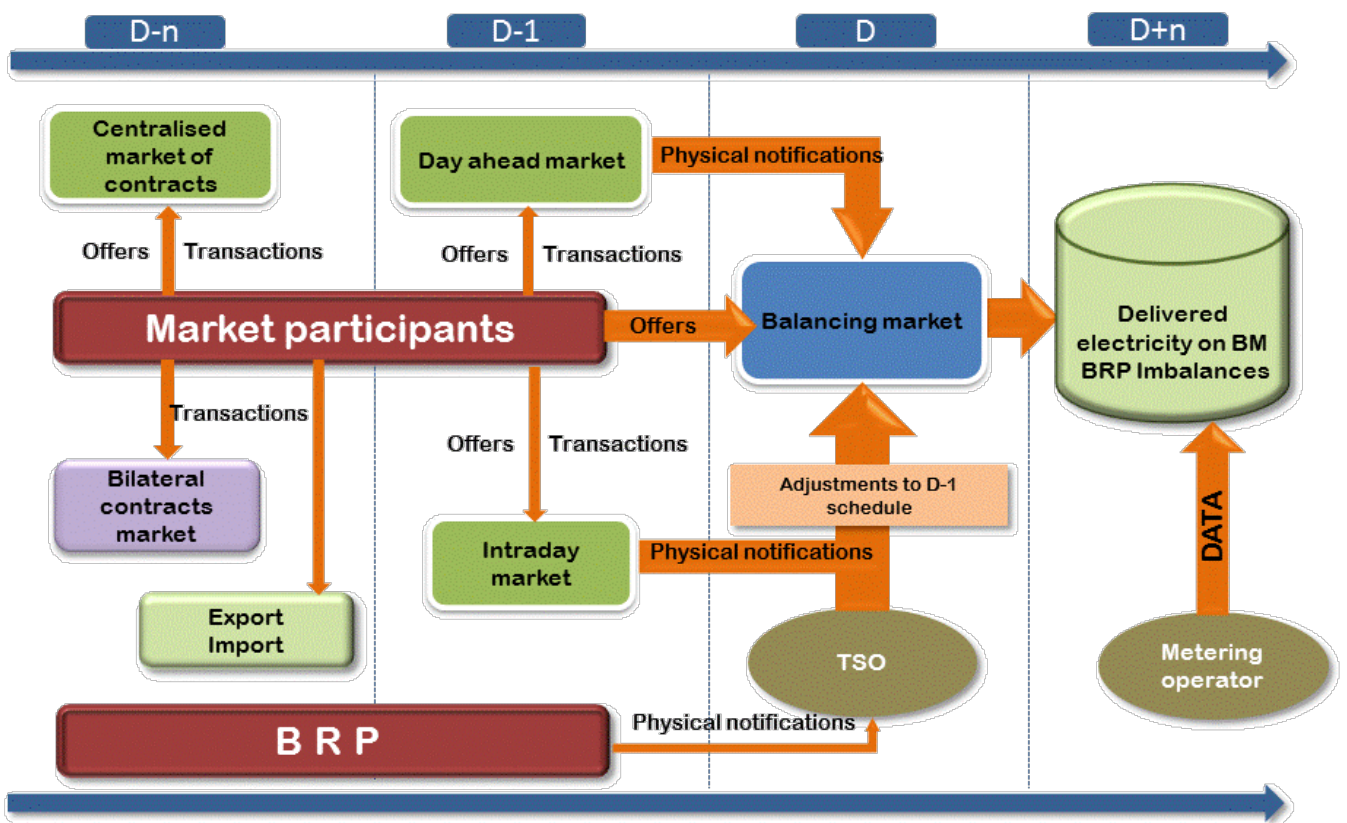
I. MAIN EVENTS IN THE DEVELOPMENT OF THE ROMANIAN ELECTRICITY MARKET

- GD 365/1998 – vertically integrated monopol – RENEL – was split into separated distribution and supply companies (SC Electrica SA) and generation companies (SC Termoelectrica SA and SC Hidroelectrica SA) were established within a new company - CONEL SA. Two other electricity generators (SN Nuclearelectrica SA and RAAN) were separately established;
- transmission, system services and market administration were separately organised, within CONEL SA;
- the relationships between parties within the electricity sector were settled based on contracts;
- GD 122/2000 – electricity market opens at 10%;
- GD 627/2000 – CONEL holding is dissolved;
- September 2000 – launch of the compulsory electricity spot market in Romania, administrated by OPCOM and organized based on pool model;
- GD 1342/2001 – SC Electrica SA splits in 8 subsidiaries for electricity distribution and supply;
- GD 1524/2002 – SC Termoelectrica SA reorganizes in several separate legal entities for generation;
- July 2005 – launch of the new market model, based on:
 - voluntary spot market, with both sides offers and bilateral settlement;
 - compulsory balancing market, with TSO as single counterparty;
 - financial responsibilities of the balancing are allocated to the BRP;
- GD 644/2005 – electricity market opens at 83.5%;
- December 2005 – launch of the green certificates market;
- December 2005 – launch of the centralized market for bilateral contracts;
- March 2007 – launch of the centralized market for partially standardized bilateral contracts with continuous negotiation;
- GD 638/2007 – fully opening of electricity and gas markets;
- July 2007 – rules for capacity market have been established.
- July 2008 – launch of the mechanism of direct debit and guarantee for electricity transactions on the day-ahead market (OPCOM as central counterparty).
- August 2008 – process of legal unbundling of distribution and supply companies has been concluded;
- August/December 2010 – launch of bilateral coordinated auctions for capacity allocation on interconnections with Hungary and Bulgaria;
- July 2011 - launch of the intraday market;
 - GD 930/2010 – SC Electrica Furnizare SA had been established through merger of the former last resort suppliers Electrica Furnizare Muntenia Nord, Electrica Furnizare Transilvania Nord and Electrica Furnizare Transilvania Sud;
- June 2012 – a new entity obtains the generation license and enters on the electricity market - Complexul Energetic Oltenia SA, established in a dual system through merger of the former SNLO Tg. Jiu, Complexul Energetic Turceni, Complexul Energetic Rovinari and Complexul Energetic Craiova (GD 1024/2011);
- July 2012 – the Law of electricity and natural gas no. 123/2012 has enter into force;
- September 2012 – the application of the first stage from the timetable of phasing out of regulated electricity tariffs to final customers who choose not to exercise their eligibility rights, in accordance with the obligations assumed by the Romanian Government in relation with the IMF, World Bank and European Commission;
- October 2012 – the Law no. 160/2012 regarding the organisation and operation of the Romanian Energy Regulatory Authority has entered into force;
- November 2012 - a new entity obtains the generation license and enters on the electricity market - Complexul Energetic Hunedoara SA, established through merger of the former Electrocentrale Deva and Electrocentrale Paroseni (GD 1023/2011);
- December 2012 – launch of the organised electricity market for the large customers;
- July 2013 – launch of centralized market trading with continuous double negotiation of bilateral contracts for electricity.

- August 2013 – removal of injection transmission tariff for the imported and respectively of the extraction transmission tariff for the exported quantities, and of the corresponding system services;
- December 2013 – removal of the export tariffs applied by the electricity market operator;
 - certification with conditions for CNTEE Tranelectrica SA as an independent transmission and system operator;
 - application of last stage of the phasing out calendar for removal the regulated tariffs applied to the final nonhousehold clients who do not use their eligibility rights;
- August 2014 – CNTEE Tranelectrica SA certification as NES transmission system operator following the „independent system operator” model.
- October 2014 – entry into force of the Law no. 127/2014 for amending the Law no. 123/2012
- November 2014 – the launch of the CZ-SK-HU-RO market coupling project, that encompasses the DAM markets from the Czech Republic, Slovakia, Hungary and Romania.
- January 2015 – entry into force of the new centralized market for bilateral contracts with its components: Extended Auctions Mechanism (CMBC–EA), Continuous Negotiation Mechanism (CMBC–CN), Fuel Processing Mechanism (CMBC–FP).
- February 2015 – implementing the centralized market for universal service

II. WHOLESALE ELECTRICITY MARKET

1. Structure of the wholesale electricity market



- Markets administrated by Opcom SA (the electricity market operator)
- Market administrated by CNTEE Tranelectrica SA (balancing market operator)
- The structure is presented within 'Transactions on the wholesale market' table – chapter 4

2. Participants on the wholesale electricity market

The market participants*¹⁾ acting on the electricity market in April 2016 are presented below split into categories:

No.	Category	No.	Category
A	Electricity generators on classic sources operating dispatching units	C	Electricity generators on biomass source operating dispatching units
1	Bepco SRL	1	Bioenergy Suceava SRL
2	CET Arad SA		
3	CET Govora SA		
4	CE Hunedoara SA		
5	CE Oltenia SA		
6	Contour Global Solutions SRL		
7	Ecogen Energy SA		
8	Electrocentrale București SA		
9	Electrocentrale Oradea SA		
10	Electro Energy Sud SRL		
11	Enet Focsani SA		
12	Lukoil Energy & Gaz Romania SRL		
13	Modern Calor SA		
14	OMV Petrom SA		
15	RAAN		
16	SNGN Romgaz SA		
17	Rulmenti SA		
18	Veolia Energie Iași SRL		
19	Veolia Energie Prahova SRL		
20	Vest Energo SA		
B	Electricity generators on wind source operating dispatching units	D	Electricity generators on solar source operating dispatching units
1	Alizeu Eolian SA	1	Blue Sand Investment SRL
2	Alpha Wind SRL	2	Caracal Solar Alpha SRL
3	Arima Development SRL	3	Casa Crang SRL
4	Blue Line Energy SRL	4	Clue Solar SRL
5	Blue Planet Investments SRL	5	Corabia Solar SRL
6	Braila Winds SRL	6	Cujmir Solar SRL
7	Bridgeconstruct SRL	7	Delta & Zeta Energy SRL
8	CAS Regenerabile SRL	8	Ecosfer Energy SRL
9	Cernavoda Power SRL	9	Eye Mall SRL
10	Corni Eolian SRL	10	Fort Green Energy SRL
11	Crucea Wind Farm SRL	11	Foton Epsilon SRL
12	Dan Holding MGM SRL	12	Gama & Delta Energy SRL
13	Eco Power Wind SRL	13	GPSB Solaris 48 SRL
14	Ecoenergia SRL	14	Greenlight Solution SRL
15	EDP Renewables Romania SRL	15	Green Vision Seven
16	Electrica Serv SRL	16	Izvor de Lumina SRL
17	SC Electricom SA	17	Kentax Energy SRL
18	Elektra Invest SRL	18	Lemar Grup SRL
19	Elektra Wind Power SRL	19	LJG Green Source Energy Alpha SA
20	Enel Green Power Romania SRL	20	LJG Green Source Energy Beta SRL
21	Energia Verde Ventuno SRL	21	LJG Green Source Energy Gamma SRL
22	Enex SRL	22	Long Bridge Milenium SRL
23	Eol Energy Moldova SRL	23	Mar-Tin Solar Energy SRL
24	Eolian Center SRL	24	Potelu Solar SRL
25	Eolica Dobrogea One SRL	25	Power L.I.V.E. One SRL
26	EP Wind Project (ROM) SIX SA	26	RA-RA PARC SRL
27	Eviva Nalbant SRL	27	Romkumulo SRL
28	Ewind SRL	28	Simico Prod Factory SRL
29	General Concrete Cernavoda SRL	29	Solar Electric Frasinet SRL
30	Green Energy Farm SRL	30	Solar Future Energy SRL
31	Holrom Renewable Energy SRL	31	Solprim SRL
32	Horia Green SRL	32	Spectrum Tech SRL
33	Ialomita Power SRL	33	Studina Solar SRL
34	Intertrans Karla SRL	34	Sun Energy Complet SA
35	Kelavent Charlie SRL	35	Tis Energy SRL
36	Kelavent Echo SRL	36	Tinmar Green Energy SRL
37	Land Power SRL	37	Vanju Mare Solar SRL
38	LC Business SRL	38	Varokub Energy Development SRL
39	M&M 2008 SRL	39	VIS Solaris 2011 SRL
40	Mireasa Energies SRL	40	Vrish Pro Investments SRL
41	OMV Petrom Wind Power SRL	41	WDP Development RO SRL
42	Ovidiu Development SRL	42	Xalandine Energy SRL
43	Peștera Wind Farm SRL	43	XPV SRL
44	Romconstruct Top SRL	E	Electricity generators on hydro source operating dispatching units
45	Sibioara Wind Farm SRL	1	Hidroelectrică SA
46	Smart Clean Power SRL		
47	Smartbreeze SRL	F	Electricity generator on nuclear source operating dispatching units
48	Soft Grup SRL	1	SN Nuclearelectrică SA
49	Tomis Team SRL		
50	Ventus Renew Romania SRL	G	Transmission System Operator
51	Wind Park Invest SRL	1	CNTEE TRANSELECTRICA SA
52	Windfarm MV I SRL	H	Market Operator for DAM, Intra-Day, Centralised Markets - CMBC-EA, CMBC-CN, CMBC-FP, CM-OTC, CMUS
53	VS Wind Farm SRL	1	OPCOM SA
		I	Distribution operators
		1	CEZ Distribuție SA
		2	ENEL Distribuție Banat SA
		3	ENEL Distribuție Dobrogea SA
		4	E.ON Moldova Distribuție SA
		5	ENEL Distribuție Muntenia SA
		6	FDÉE Electrica Distribuție Muntenia Nord SA
		7	FDÉE Electrica Distribuție Transilvania Sud SA
		8	FDÉE Electrica Distribuție Transilvania Nord SA
		J	Suppliers of Last Resort
		1	CEZ Vanzare SA
		2	ENEL Energie SA
		3	E.ON Energie Romania SA
		4	ENEL Energie Muntenia SA
		5	Electrica Furnizare SA

No.	Category
K	Electricity Suppliers acting exclusively on the wholesale market
1	Alpiq Energy SE
2	SC Bit-Reen SRL
3	CEZ as
4	Danske Commodities/s Aarhus
5	Edison Trading Spa
6	EDF Trading Limited
7	Energo-Pro Trading EAD
8	SC Energy Market Consulting SRL
9	EVN Trading South East Europe
10	Ezpada SRO
11	Freepoint Commodities Europe Ltd
12	GEN I trgovanje in prodaja elektricne energije doo
13	Holding Slovenske Elektrarne
14	SC Industrial Instal Service SRL
15	Interenergo Energetski, Inzeniring d.o.o.
16	JAS Energy Trading s.r.o.
17	SC Lord Energy SRL
18	MVM Partner Zrt
19	SC Nis Petrol SRL
20	OMV Trading GmbH
21	Petrol Bucharest Rom SRL
22	Photovoltaic Green Project SRL
23	Societatea Energetică Electrica
24	Statkraft Markets GmbH
25	SC Verbund Trading Romania SRL
26	SC Vertis Energy SRL
27	Vitol Gas and Power B.V.
L	Electricity Suppliers acting also on the retail market
1	SC A Energy Ind SRL
2	SC Absolute Energy SRL
3	SC Aderro G.P. Energy SRL
4	SC Alpiq RomIndustries SRL
5	SC Alro SA
6	SC Aqua Energia SA
7	SC Arelco Power SRL
8	SC Axpo Energy Romania SRL
9	SC Belectric Energy Trading SRL
10	SC Biol Energy SRL
11	SC Ciga Energy SA
12	SC Cotroceni Park SA
13	SC C-Gaz & Energy Distributie SRL
14	SC Curent Alternativ SRL
15	SC CYEB SRL
16	SC Eco2Energy Choice SRL
17	SC EFE Energy SRL
18	SC EFT Furnizare SRL
19	SC Electric Planners SRL
20	SC Electricificare CFR SRL
21	SC Electrocarbon SA
22	SC Electromagnetica SA

No.	Category
M	Electricity Suppliers acting also on the retail market
23	SC Elsaco Energy SRL
24	SC Elsid SA
25	SC Enel Trade Romania SRL
26	SC Energy Distribution Services SRL
27	SC Energotrans SRL
28	SC Energy Network SRL
29	SC Engie Romania SA
30	SC Enol Grup SA
31	SC Entrex Services SRL
32	SC Eolian Project SRL
33	SC E.V.A. Energy SRL
34	SC Fidelis Energy SRL
35	SC Flavis Investiții SRL
36	SC GDM Logistic SRL
37	SC General Com Invest SRL
38	SC Getica 95 COM SRL
39	SC Grenerg SRL
40	SC Hermes Energy International SRL
41	SC ICCO Energ SRL
42	SC ICPE Electrocond Technologies SA
43	SC Industrial Energy SA
44	SC Inversolar Energy SA
45	SC Imperial Development SRL
46	SC KDF Energy SRL
47	SC Luxten LC SA
48	SC Menarom PEC SRL
49	SC MET Romania Energy Trade SRL
50	SC Midas&CO SRL
51	SC Monsson Trading SRL
52	SC Neptun SA
53	SC Nova Power&Gas SRL
54	SC P.C. Management & Consulting SRL
55	SC Polimed Energy Trading SRL
56	SC Power Clouds SRL
57	SC QMB Energ SRL
58	SC RCS&RDS SA
59	SC Romelectro SA
60	SC Renovatio Trading SRL
61	SC Repower Furnizare Romania SRL
62	SC Restart Energy One SRL
63	SC Romenergy Industry SRL
64	SC RWE Energie SRL
65	SC Tinmar Energy SA
66	SC Transformer Energy Supply SRL
67	SC Transenergo Com SA
68	SC Three Wings SRL
69	SC UGM Energy Trading SRL
70	SC Verta Tel SRL
71	Vienna Energy Forta Naturala
72	SC Werk Energy SRL

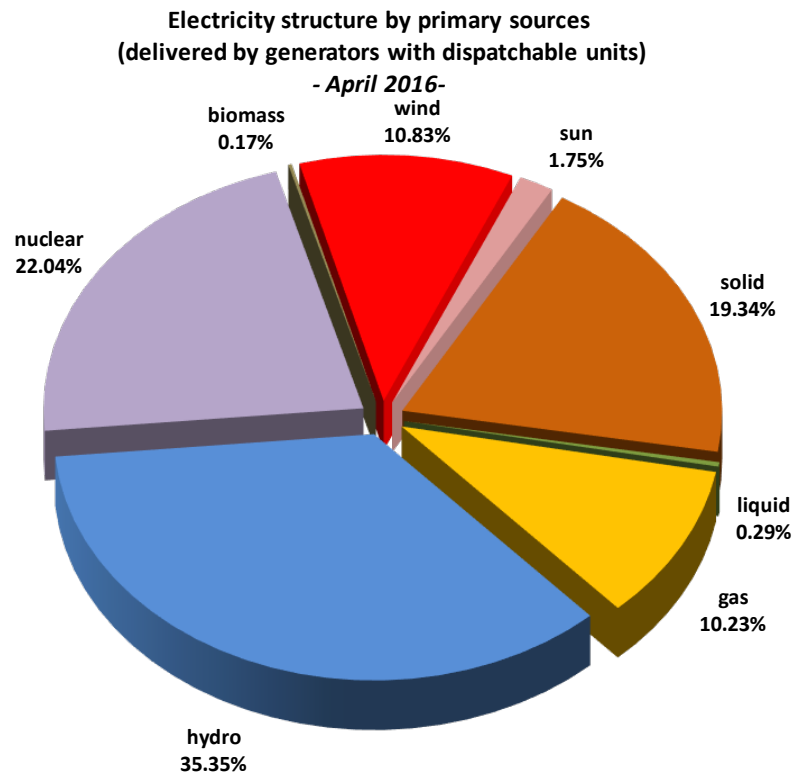
*) The electricity market participants report to ANRE technical/commercial data according to the *Methodology of wholesale electricity market monitoring for assessing the competition level on market and preventing the abuse of dominant position*, approved by ANRE Order no. 35/2006 as well as to the *Methodology of retail electricity market monitoring*, approved by ANRE Order no. 60/2008. The table does not include the Balancing Responsible Parties (BRP). The BRP updated list is published on the Balancing Market Operator website - www.transelectrica.ro.

ANRE monitors the market activity of the generators with dispatchable units. According to the Regulation of scheduling the dispatchable generation units and consumption units, the considered generation units are:

- hydro generation group with installed power higher than 10 MW;
- thermal generation group (including biomass and nuclear) with installed power higher than 20 MW;
- wind, photovoltaic or internal combustion engine with installed power higher than 5 MW.

Electricity Suppliers acting exclusively on the wholesale market category include supplying license owners who act only on wholesale market and owners of a trading license issued according ANRE Order no. 13/2015 for approval the „General conditions associated to trading electricity license”.

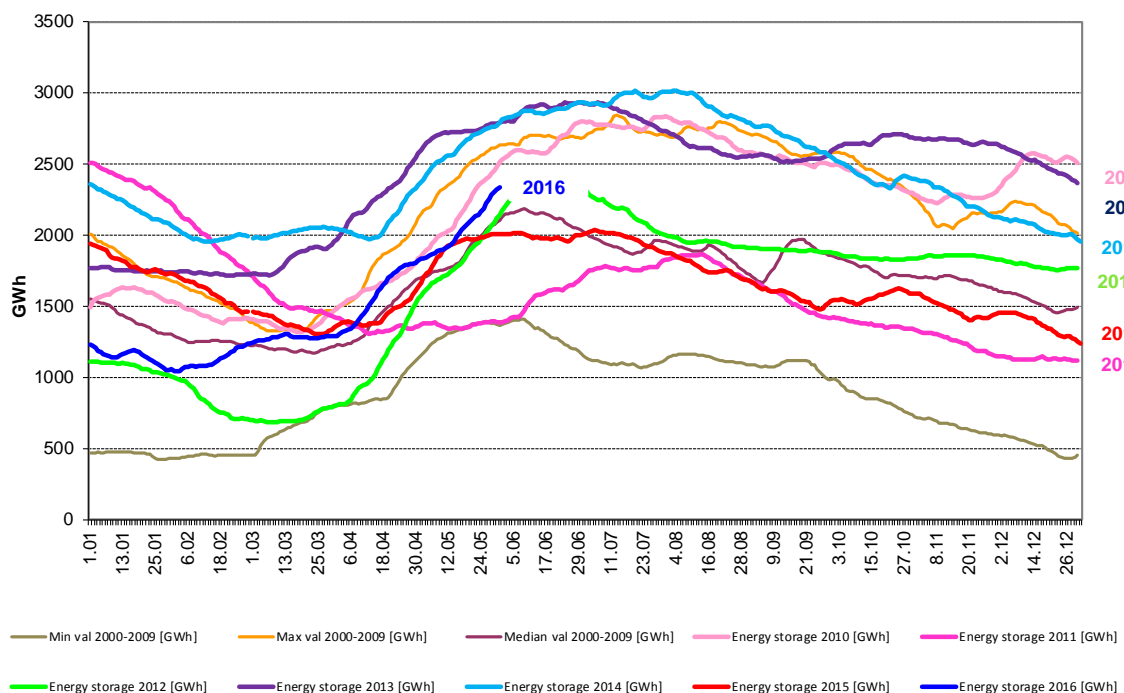
3. Generation structure of National Energy System on resources types



Source: Monthly reports of generators – processed by MG

The electricity generated from hydro resources and the energy stored in the main water reservoirs is directly correlated. The following graph presents the evolution of daily amounts of energy storage during April 2016 compared to the daily values of the last 6 years and compared to minimum, maximum and median values from 2000-2009.

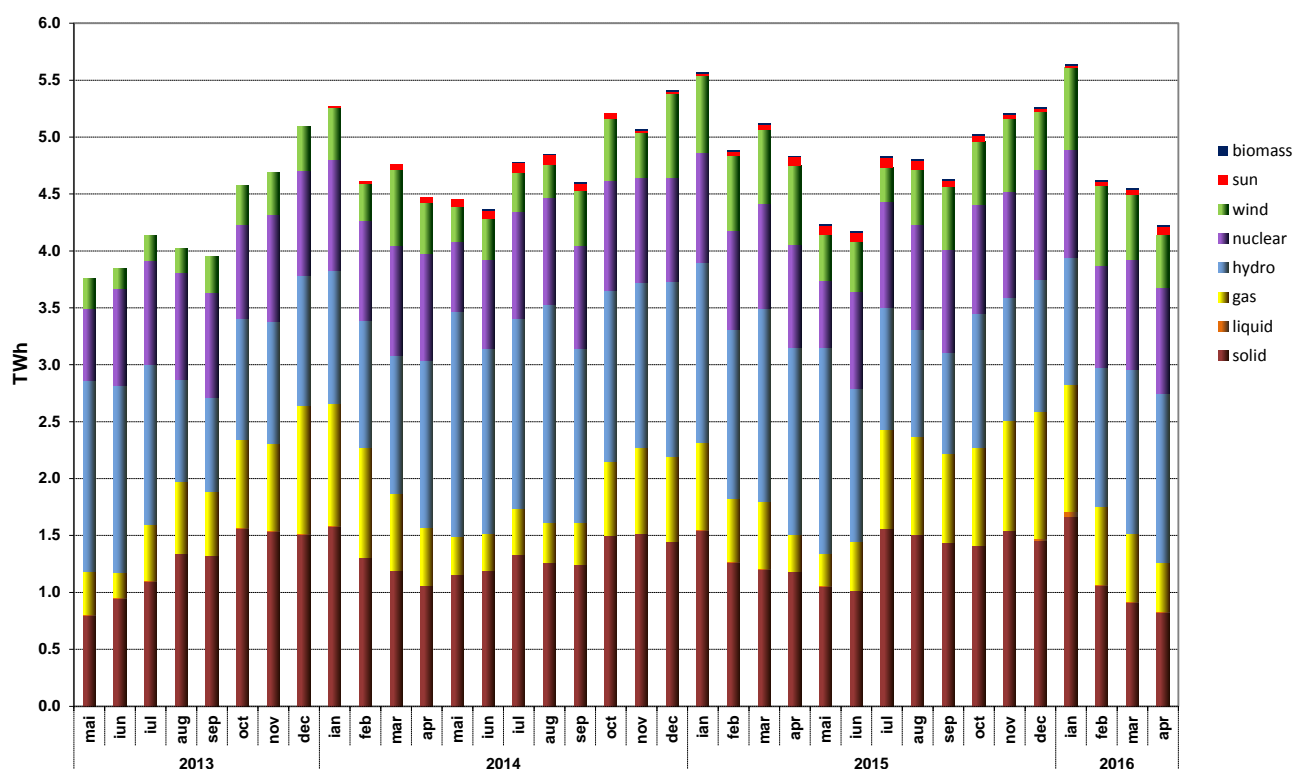
Yearly evolution of daily values of energy stored in the main water reservoirs



Source: Monthly reports of S.C. Hidroelectrica S.A. – processed by MG

The evolution of delivered electricity structure, during the last 3 years, is the following:

Evolution of electricity delivered by generators with dispatchable units by primary sources



Source: Monthly reports of generators – processed by MG

The following table presents the main data regarding the physical balance of electricity for April 2016 compared to data for similar period of 2015:

Nr. Crt.	INDICATOR	UM	Apr 2015	Apr 2016	%	Jan-Apr 2015	Jan-Apr 2016	%
0	1	2	3	4	$5=4/3*100$	6	7	$8=7/6*100$
1	Generated electricity	TWh	5.13	4.48	87.33	21.85	20.39	93.32
2	Delivered electricity	TWh	4.83	4.22	87.37	20.40	19.01	93.19
3	Import	TWh	0.21	0.33	157.14	1.07	1.53	142.99
4	Export	TWh	1.00	0.51	51.00	3.60	2.58	71.67
5	Internal consumption (2+3-4)	TWh	4.04	4.03	99.75	17.87	17.97	100.56
6	Consumption of household customers on the regulated market	TWh	0.96	0.94	97.92	4.13	4.18	101.21
7	Consumption of non-households customers	TWh	2.68	2.74	102.24	11.33	11.45	101.06
7.1	on the regulated market	TWh	0.17	0.12	70.59	0.84	0.58	69.05
7.2	on the competitive market	TWh	2.51	2.62	104.38	10.49	10.87	103.62
8	Transmission–Injection component	TWh	4.81	4.13	85.86	20.30	18.72	92.22
9	Transmission–Extraction component	TWh	4.19	4.14	98.81	18.20	18.16	99.78
10	Actual transmission grid losses	TWh	0.10	0.08	80.00	0.38	0.34	89.47
11	Heat generated for delivery	Tcal	1008.59	605.52	60.04	6670.34	5826.39	87.35
12	Heat in co-generation	Tcal	745.79	498.02	66.78	5350.80	4906.70	91.70

Note: 1. The generated electricity and delivered electricity are presented according to the data reported by monitored generators, as they are defined as dispatchable in the Regulation of scheduling the dispatchable generation units and consumption units approved by the ANRE Order no. 32/2013, therefore, starting with January 2014, the number of monitored generators has strongly increased;
2. Data shown in the table neither include the energy produced by the generators who do not own dispatchable units (positions 1 & 2) nor the energy delivered to the customers directly connected to the power plants (positions 6 & 7).
3. The imported/exported quantities do not comprise transits and crossborder exchange of CNTEE Transelectrica SA with neighboring countries in order to ensuring the balance of the national energy system.
4. The electricity quantity for applying the injection tariff is the electricity delivered by the generation units with installed capacity higher than 5 MW linked to the transmission network and distribution network.
5. Households customers consumption for US regime represents electricity consumption invoiced at regulated and “Competitive Market Component” (CMC) tariff.

4. Transactions’ structure on the wholesale electricity market

The size of wholesale market depends on the sum of all transactions performed by the market players, exceeding the quantities physically transmitted from generation to consumption; the total transactions include also resale transactions made in order to match the contractual obligations and to obtain financial benefit.

When entering into force, the Law no. 123/2012 on Electricity and Natural Gas has set the general principle that energy competitive market and electricity transactions should take place in a transparent, public, centralized and non-discriminatory way. Therefore, all the new transactions have to be the result of participation on the centralized markets administrated by Opcom SA, the only owner of a license issued by ANRE for the electricity market operation in Romania. The centralized markets which are presently functional are DAM (Day Ahead Market), CMBC (centralized market of bilateral contracts with Extended Auction mechanism-EA, with Continuous Negotiation mechanism-CN, with Fuel Processing mechanism -FP), ID (Intraday Market), CM-OTC – (Centralized Market with Double Continuous Negotiation for Electricity Bilateral Contracts), CM-LCM (Large Consumers mechanism) and CMUS (Centralized Market for Universal Service).

Besides the existing centralized markets operated by Opcom SA (which ensure the transparent, public, centralized and non-discriminatory character required by the Law) there still exist bilateral negotiated contracts concluded before the entering into force of the Law still pending, export and import contracts and regulated contracts with regulated quantities and prices, based on ANRE decisions concluded between a number of generators and the suppliers of last resort.

Following the entering into force of the Law no. 23/2014 subsequent to Law no. 220/2008 for establishing the system for promoting producing electricity from renewable energy sources, modified and completed by Law no. 122/2015, a specific range of RES generators may conclude negotiated bilateral contracts as follows:

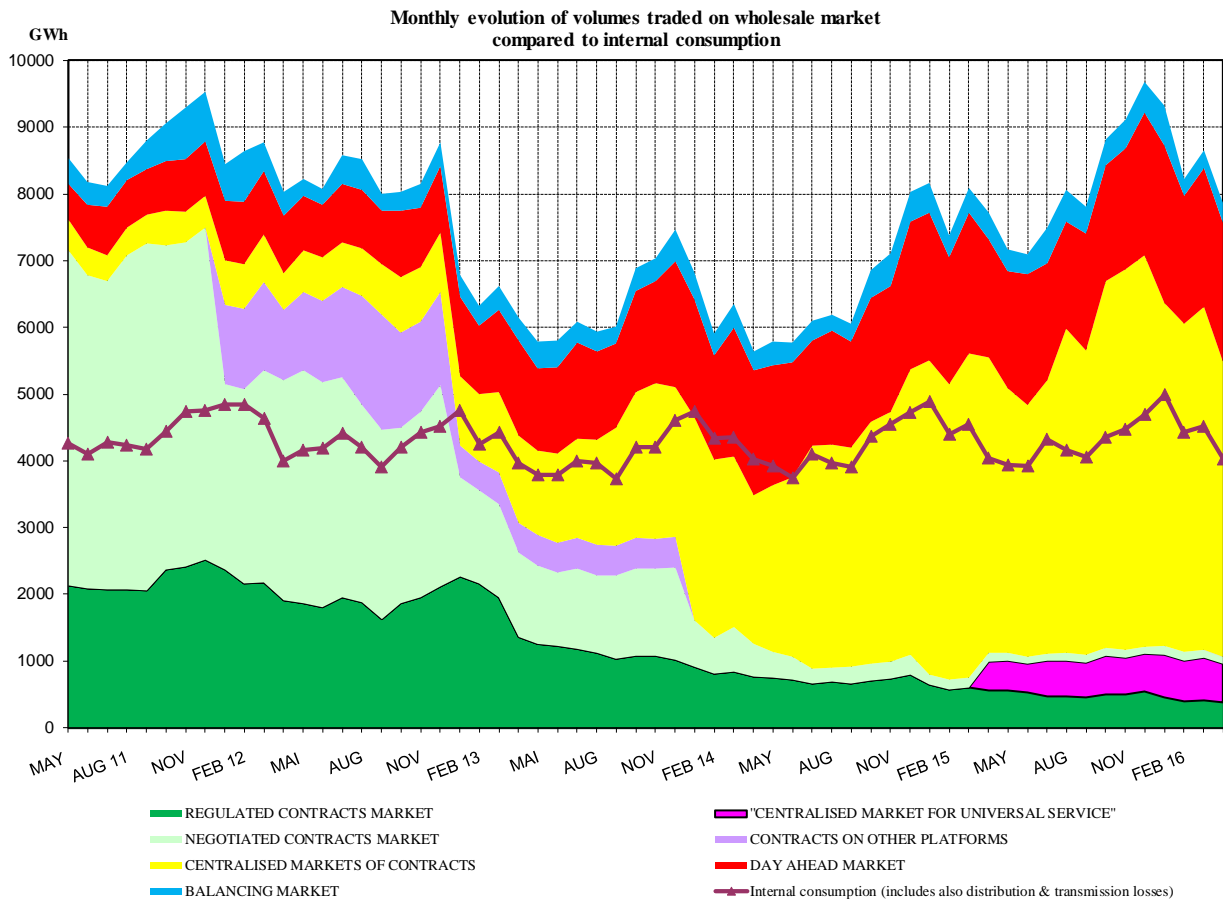
- those owning power plants that benefit from the promotion system and having installed capacity less than 1 MW/generator and less than 2 MW/generator for biomass high efficiency cogeneration, but only with suppliers for final customers;
- those owning power plants that benefit from the promotion system and having installed capacity between 1 and 3 MW/generator and between 2 and 3 MW/generator for biomass high efficiency cogeneration, but only if they are considered small or medium enterprises, according to the Law no. 346/2004.

The following table presents the volumes traded and the average prices on each type of contracts and on the main components of the wholesale market. The aggregated volumes and the average prices on negotiated contracts are reported by market participants on their own responsibility and except the concluded contracts based on provisions of Law no. 23/2014 they should reflect only the ongoing contracts which had been concluded before Law no. 123/2012 entered into force.

TRANSACTIONS ON THE WHOLESALE MARKET	March 2016	April 2016	April 2015
1. BILATERAL CONTRACTS' MARKET			
traded volume (GWh)	528	485	697
average price (lei/MWh)	135.83	137.90	138.98
% from internal consumption (%)	11.7	12.0	17.3
1.1. Sales on regulated contracts			
traded volume (GWh)	411	380	563
average price (lei/MWh)	137.02	137.10	143.30
% from internal consumption (%)	9.1	9.4	13.9
1.2. Sales on negotiated contracts¹⁾			
traded volume (GWh)	118	105	134
average price (lei/MWh)	131.68	140.82	120.93
% from internal consumption (%)	2.6	2.6	3.3
2. EXPORT			
traded volume (GWh) ²⁾	518	512	999
average price (lei/MWh)	120.79	129.42	135.86
% from internal consumption (%)	11.4	12.7	24.7
3. CENTRALIZED MARKETS OF CONTRACTS			
traded volume (GWh)	5136	4421	4427
average price (lei/MWh)	148.02	146.82	158.66
% from internal consumption (%)	113.6	109.7	109.6
3.1. Extended auction mechanism CMBC-EA³⁾			
traded volume (GWh)	2149	1853	2534
average price (lei/MWh)	156.95	155.36	161.31
% from internal consumption (%)	47.5	46.0	62.7
3.2. Continuous negotiation mechanism CMBC-CN³⁾			
traded volume (GWh)	536	503	737
average price (lei/MWh)	145.33	134.52	157.17
% from internal consumption (%)	11.9	12.5	18.3
3.3. CM-OTC mechanism³⁾			
traded volume (GWh)	2450	2066	1155
average price (lei/MWh)	140.77	142.16	153.78
% from internal consumption (%)	54.2	51.2	28.6
4. CENTRALIZED MARKET FOR UNIVERSAL SERVICE - CMUS			
traded volume (GWh)	643	577	430
average price (lei/MWh)	182.95	133.59	167.44
% from internal consumption (%)	14.2	14.3	10.6
5. DAY AHEAD MARKET			
traded volume (GWh)	2074	2084	1763
average price (lei/MWh) ⁴⁾	116.42	129.41	116.34
% from internal consumption (%)	45.9	51.7	43.6
6. INTRADAY MARKET			
traded volume (GWh)	12.2	16.4	7.9
average price (lei/MWh) ⁵⁾	114.34	123.94	104.76
% from internal consumption (%)	0.3	0.4	0.2
7. BALANCING MARKET			
traded volume (GWh)	268	301	401
% from internal consumption (%)	5.9	7.5	9.9
upward volume (GWh)	169	144	190
average negative imbalance price(lei/MWh)	244.87	244.68	245.89
downward volume (GWh)	99	157	211
average positive imbalance price (lei/MWh)	4.20	29.97	22.09
INTERNAL CONSUMPTION (includes distribution and transmission losses) (GWh)	4521	4031	4039

- Note :
- 1) Supply contracts to final customers and export contracts are not included as they are separately identified
 - 2) Export volumes and price informations correspond to notifications from DAMAS platform for electricity extracted from RET and include both volumes reported by only generator traded this activity (outside of the monitoring report) and volumes exported by CNTEE Transselectrica in his shipper export role for coupled DAM; in some cases those volumes are different from those reported as traded by participants
 - 3) The monthly data are presented as reported by the participants for the electricity delivered in the respective month. These information refer both to transactions concluded previously on CMBC and CMBC-NC (ANRE Order 6/2011) and to transactions concluded on CMBC-EA and CMBC-NC (ANRE Order 78/2014) with delivery within the reported month
 - 4) Price table price is calculated as the average of the hourly market closing price and it is published by Opcom SA. The average monthly price calculated as weighted average of the hourly market closing price with traded volumes was 130.52 lei/MWh in April 2016 as published by Opcom SA
 - 5) The average monthly price is calculated based on monthly traded volume and transaction value published by Opcom SA

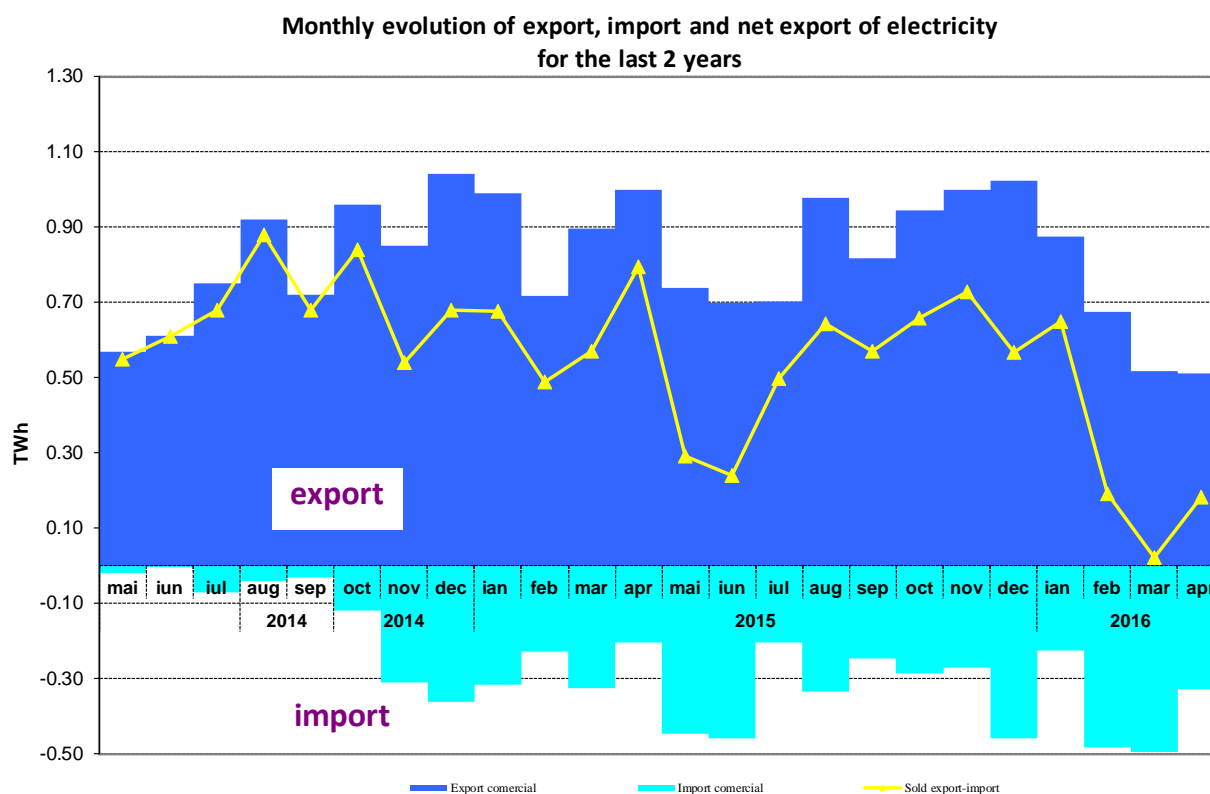
The percentage of electricity quantities from the internal consumption (see table from above) offers a dimensional reference for each of the specified markets. Prices include only the injection component of the transmission tariff, in this way being comparable within a month and making possible the comparison with the previous month. The following graph presents the evolution of the relation between the volumes sold on each market and the estimated internal consumption, since May 2011.



Source: Monthly reports of wholesale market participants, Opcom SA and CN Transselectrica SA – processed by MG

Note: In the above graph, the volumes traded on negotiated contracts' market do not include the export trades

The following graph presents the monthly values of commercial export (quantities for which the extraction component of transmission tariff was applied), commercial import (quantities for which the injection component of transmission tariff was applied) and the net export (export minus import) during the last 24 months:

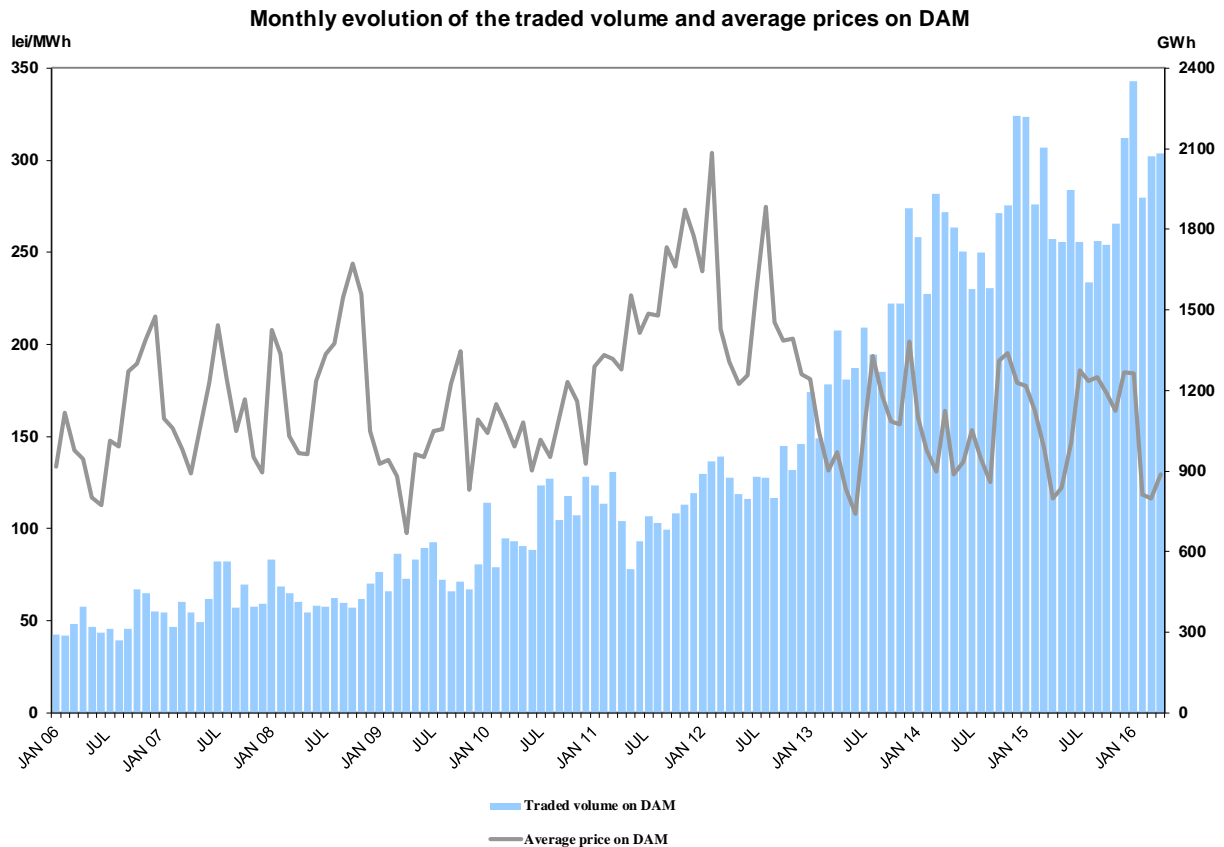


Source: Monthly reports of CN Tranelectrica SA – processed by MG

The following table presents commercial export and import transactions for electricity extracted/introduced from/in transmission network. These include transaction of CNTEE Tranelectrica SA as shipper agent in the price coupling mechanism of DAM, known as 4M MC. Shipper agent role is reflected in physical and commercial transfer of electricity for import/export on the interconnections between Romania and Hungary.

Import/Export Transactions	March 2016	April 2016	April 2015
Export			
traded volume (GWh)	518	512	999
average price (lei/MWh)	120.79	129.42	135.86
% from internal consumption	11.4	12.7	24.7
in which, for coupled DAM			
traded volume (GWh)	36	47	4
average price (lei/MWh)	79.91	118.25	77.70
% from internal consumption	0.8	1.2	0.1
Import			
traded volume (GWh)	494	328	205
average price (lei/MWh)	125.62	131.85	138.21
% from internal consumption	10.9	8.1	5.08
in which, for coupled DAM			
traded volume (GWh)	267	173	186
average price (lei/MWh)	130.59	132.65	137.06
% from internal consumption	5.9	4.3	4.6

The following graph presents the volumes and the monthly average prices on DAM starting with January 2006:



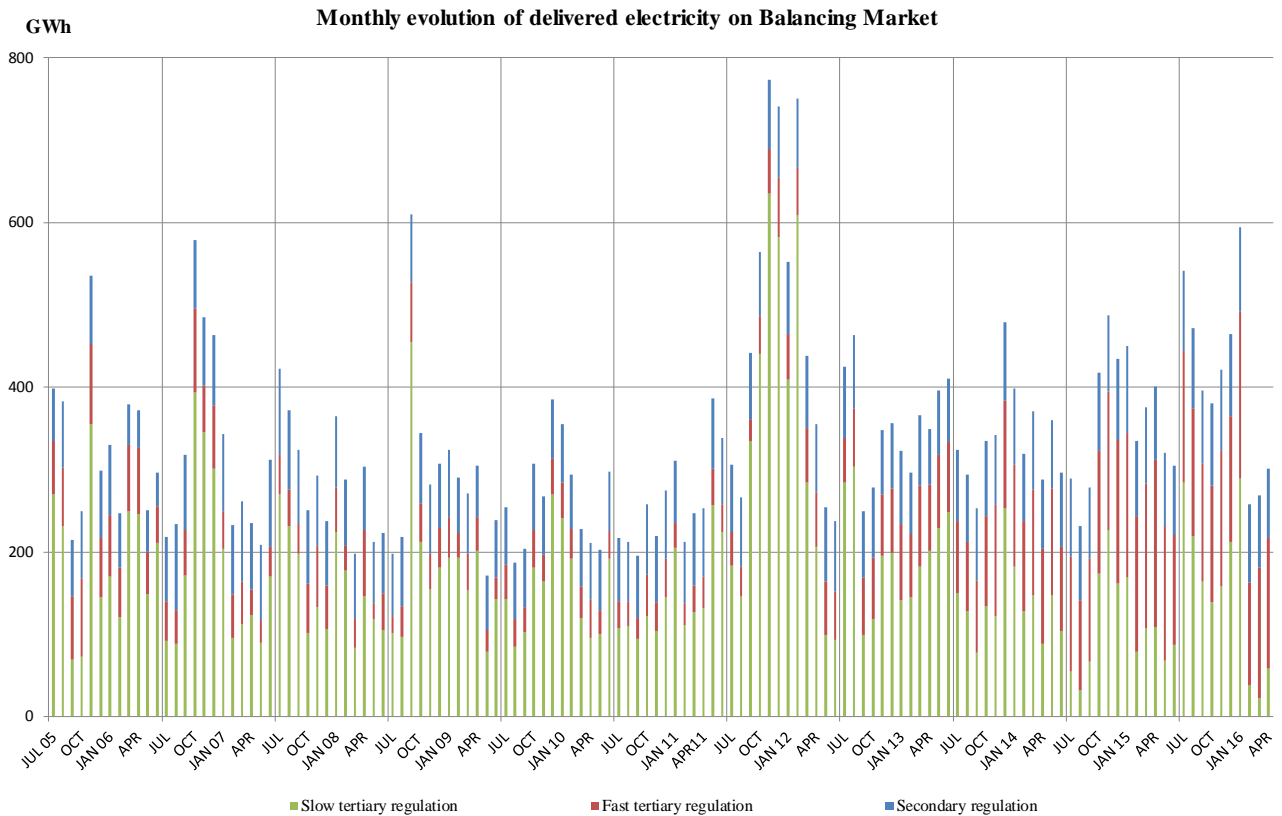
Source: Monthly reports of Opcom SA and CN Transelectrica SA – processed by MG

Balancing electricity is determined by the dispatch orders (accepted offers) received by generators. After settlement, the actual electricity delivered by generators on balancing market is determined based on the measured (approved) values; the relation between the accepted and delivered electricity in April 2016 presented in the following table:

April 2016	Dispatch order (GWh)	Delivered electricity (GWh)	Deviation (%)
Secondary regulation	84	84	
<i>upward</i>	37	37	
<i>downward</i>	47	47	
Fast tertiary regulation	165	159	4
<i>upward</i>	108	104	4
<i>downward</i>	57	54	4
Slow tertiary regulation	59	58	2
<i>upward</i>	2	2	0
<i>downward</i>	57	56	2
TOTAL	309	301	
<i>upward</i>	148	144	
<i>downward</i>	161	157	
INTERNAL CONSUMPTION		4031	
<i>% share of traded volumes from internal consumption</i>		7.5%	

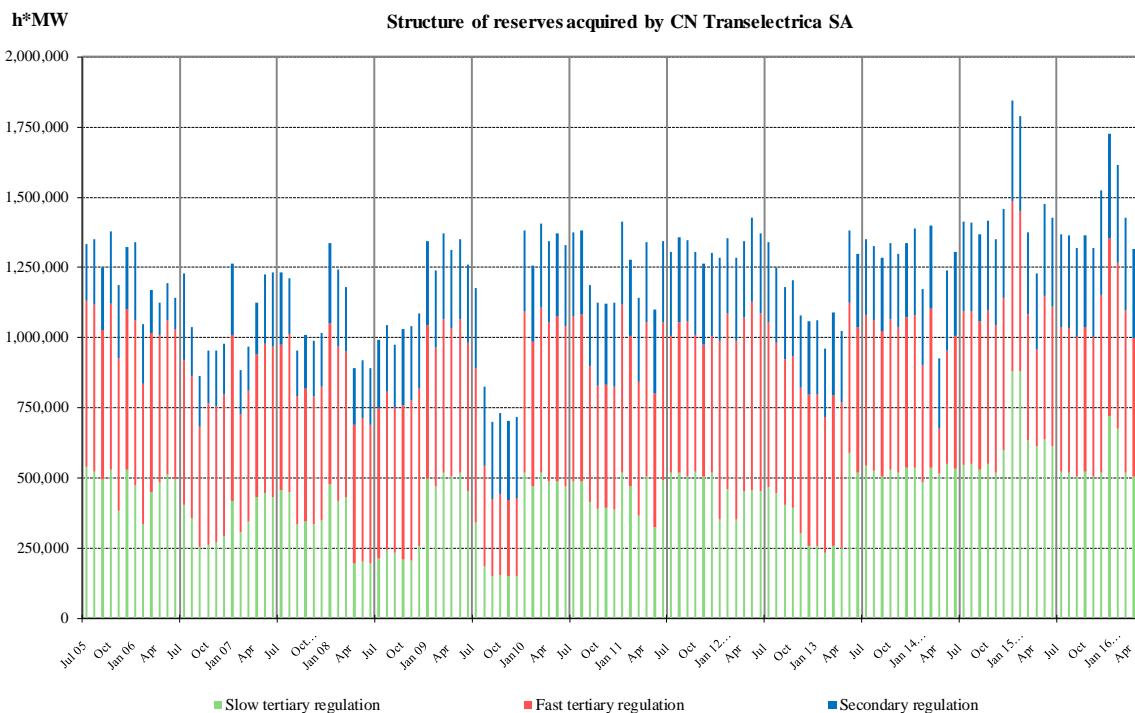
Source: Monthly reports of CN Transelectrica SA – processed by MG

The structure of balancing electricity delivered in the system on each type of regulation starting since July 2005 is presented in the graph below:



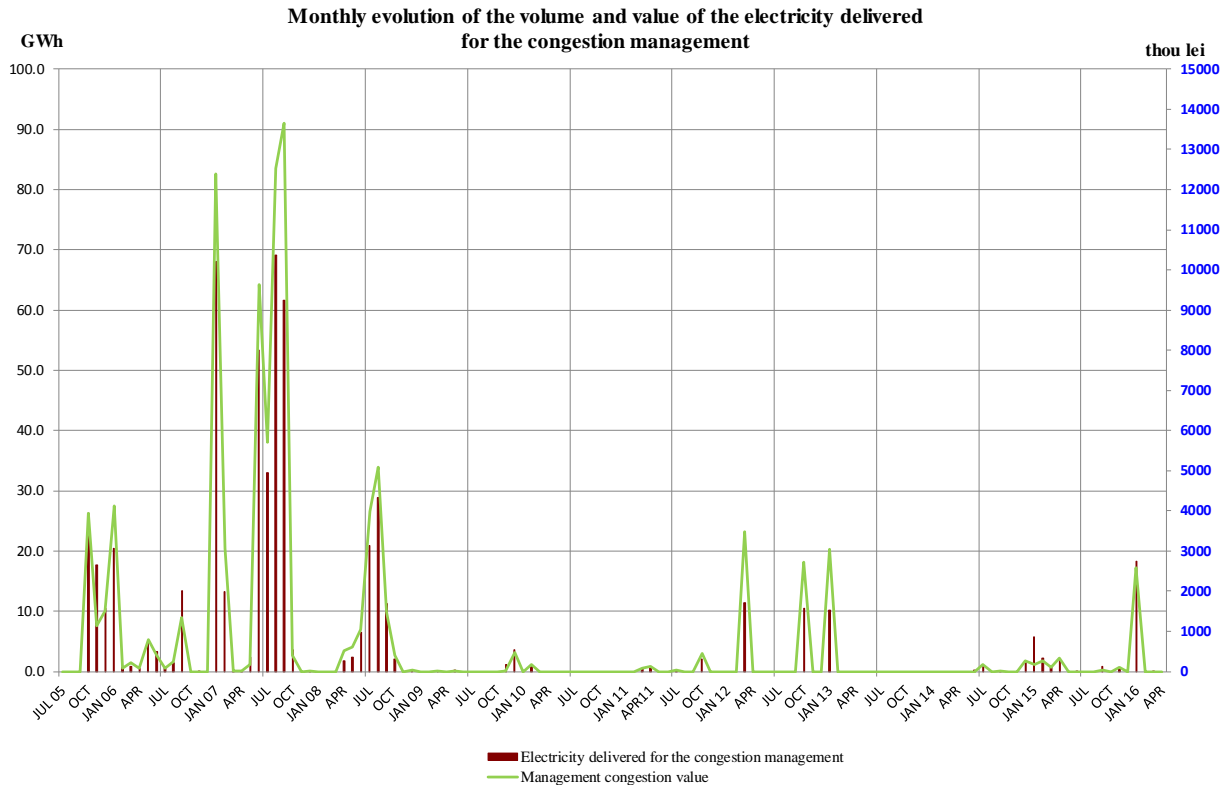
Source: Monthly reports of CN Tranelectrica SA – processed by MG

For comparison, the following graph presents the evolution of reserves (ancillary services, i.e. obligations of generators to maintain their contracted capacities available for dispatching/offering on BM) acquired/paid by CN Tranelectrica SA since July 2005 is shown in the graph below:



Source: Monthly reports of CN Tranelectrica SA – processed by MG

The following graph presents the evolution of electricity traded by CNTEE Tranelectrica SA on the Balancing Market for covering the electricity used for congestion management (in order to solve the congestions occurred within the transmission grid) and the evolution of the values of these transactions starting from July 2005.



Source: Monthly reports of CN Tranelectrica SA – processed by MG

5. Trading structure on the wholesale electricity market of different participant categories

Generators

In April 2016, the structure of electricity sales obligations contracted before delivery interval by the electricity generators with dispatchable units in was the following:

Transaction type	April 2015	April 2016
Regulated contracts to suppliers of last resort - hydro generator	368.27	250.15
Regulated contracts to suppliers of last resort - nuclear generator	194.77	129.86
Negotiated contracts to suppliers	133.57	104.56
Contracts concluded on Opcom centralized markets:	2801.41	2022.32
<i>CMBC-EA</i>	1795.28	1294.87
<i>CMBC-CN</i>	662.33	209.88
<i>CM-OTC</i>	343.80	517.57
Centralized market for universal service	270.00	442.86
DAM	1076.70	1472.85
Intraday	5.71	9.61
Export	0.00*	0.00
Supply contracts to final customers	190.43	191.02
Total	5040.86	4623.22

Source: Monthly reports of generators – processed by MG

**In April 2015, one generator reported transactions concluded on Hungary market of 7200 MWh, outside the monitoring report*

Suppliers

In April 2016, 102 companies with main activity the supply of electricity, concluded transactions on the electricity market; from those, 27 suppliers traded exclusively on the wholesale market (some of those owning already a trading license) and 75 suppliers on both retail and wholesale markets (in this category there are also included the 5 suppliers of last resort which act on both retail and wholesale markets).

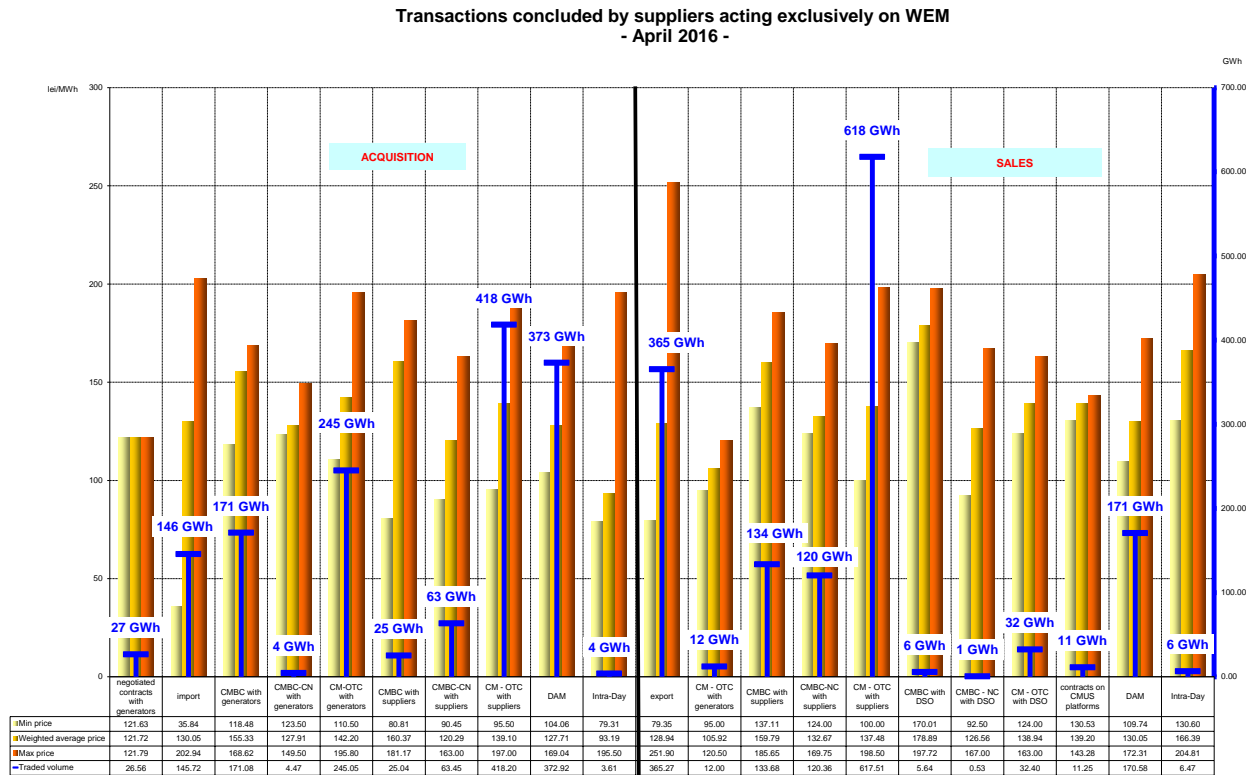
Suppliers acting exclusively on WEM

The following table shows the activity for April 2016 compared to April 2015 of the suppliers acting exclusively on WEM, acquisitions and sales being split by categories of markets/participants:

Transactions structure of suppliers acting exclusively on WEM	-GWh-	
	April 2015	April 2016
Purchase		
Import	11.37	145.72
Negotiated contracts with generators	44.37	26.56
Contracts concluded on Opcom centralized markets:	1273.01	927.30
- on CMBC-EA with generators	410.34	171.08
- on CMBC-CN with generators	189.30	4.47
- on CM-OTC with generators	220.66	245.05
- on CMBC-EA with other suppliers	61.22	25.04
- on CMBC-CN with other suppliers	11.51	63.45
- on CM-OTC with other suppliers	379.99	418.22
DAM	259.38	372.92
Intraday market	4.80	3.61
Sales		
Export	674.97	365.27
Negotiated contracts with others suppliers	0.86	0.00
Contracts concluded on Opcom centralized markets:	623.78	922.13
- on CMBC-CN with generators	1.45	0.00
- on CM-OTC with generators	0.00	12.00
- on CMBC-EA with other suppliers	77.87	133.68
- on CMBC-CN with other suppliers	26.40	120.36
- on CM-OTC with other suppliers	449.66	617.53
- on CMBC-EA with DO	50.40	5.64
- on CMBC-CN with DO	0.00	0.53
- on CM-OTC with DO	18.00	32.40
Centralized market for universal service	0.00	11.25
DAM	253.42	170.58
Intraday market	1.50	6.47

Source: Monthly reports of suppliers – processed by MG

In addition to the data from the table above, the following graph presents the minimum, average and maximum actual prices by categories of transactions completed by the suppliers acting exclusively on WEM (traders) in April 2016.



Source: Monthly reports of the competitive suppliers – processed by MG

Active suppliers on REM (the suppliers of last resort are not included)

The following table presents aggregated information on transactions volume and structure for suppliers providing electricity to final customers, on the competitive market, for April 2016 compared to the situation of April 2015:

Transactions' structure of suppliers acting on REM (suppliers of last resort excluded)	April 2015	April 2016
Purchase		
Import	6.16	9.56
Negotiated contracts with suppliers	0.86	0.00
Negotiated contracts with generators	91.07	79.21
Contracts concluded on Opcom centralized markets:	2075.24	2249.98
- on CMBC-EA with generators	825.88	648.91
- on CMBC-CN with generators	421.78	64.28
- on CM-OTC with generators	105.48	215.11
- on CMBC-EA with other suppliers	301.83	320.41
- on CMBC-CN with other suppliers	42.74	53.61
- on CM-OTC with other suppliers	377.54	947.65
Negotiated contracts with undispatchable generators (others than L23/2014 and L122/2015)*	39.18	21.72
Negotiated contracts with undispatchable generators (L23/2014 and L122/2015)**	17.53	30.12
DAM	790.64	928.70
Intraday market	0.47	4.82

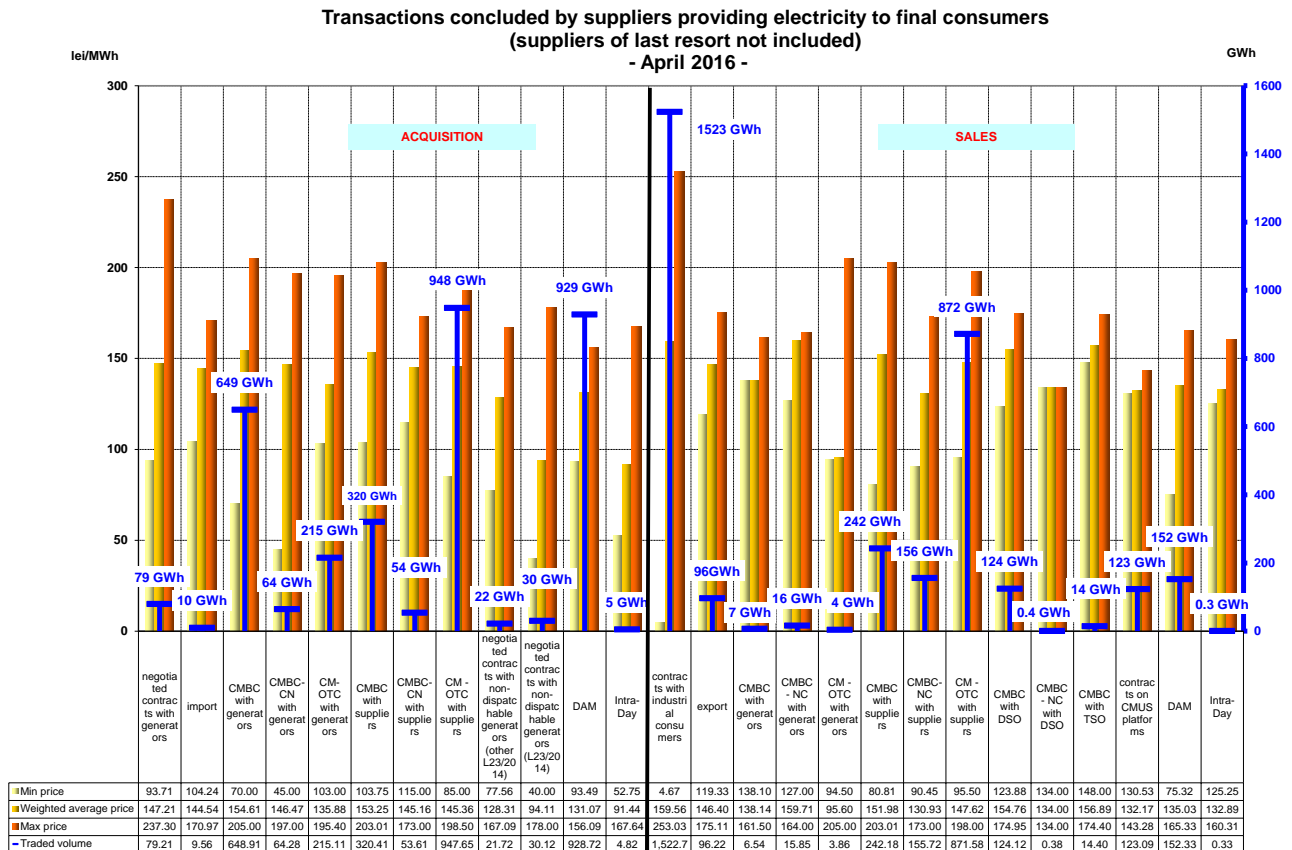
Sales		
Export	271.90	96.22
Contracts concluded on Opcom centralized markets:	898.78	1434.63
- on CMBC-EA with generators	18.72	6.54
- on CMBC-NC with generators	8.63	15.85
- on CM-OTC with generators	0.00	3.86
- on CMBC-EA with other suppliers	372.74	242.18
- on CMBC-NC with other suppliers	37.50	155.72
- on CM-OTC with other suppliers	343.78	871.58
- on CMBC-EA with TSO	15.83	14.40
- on CMBC-EA with DO	100.74	124.12
- on CMBC-NC with DO	0.84	0.38
Centralized market for universal service	159.84	123.09
DAM	157.61	152.33
Intraday market	0.56	0.33
Non-household customers	1515.94	1522.72

Source: Monthly reports of the competitive suppliers– processed by MG

*negotiated trades concluded with undispachable generators which are not able to conclude contracts according to Law 23/2014 provisions, with subsequent changes and additions of Law no. 122/2015, both Laws subsequent to Law no. 220/2008

**negotiated trades concluded with undispachable generators which may conclude contracts according to Law 23/2014 provisions, with subsequent changes and additions of Law no. 122/2015, both Laws subsequent to Law no. 220/2008

In addition to the data from the table above, the following graph presents the sales structure and the minimum, average and maximum actual prices by categories of transactions completed by suppliers providing electricity to final customers April 2016:



Source: Monthly reports of the competitive suppliers– processed by MG

Suppliers of last resort

Electricity acquisition structure of suppliers of last resort (before the delivery interval), for supplying the regulated market customers, is presented in the table below, April 2016, compared to April 2015:

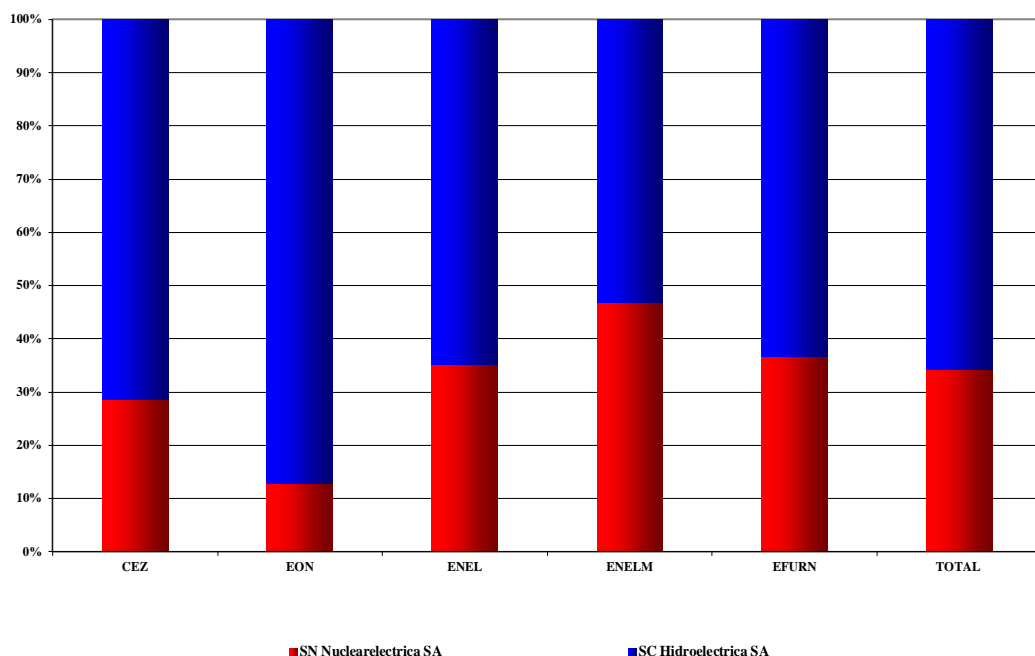
- GWh -

Acquisition structure of suppliers of last resort for regulated REM component	April 2015	April 2016
Regulated contracts with generators	563.03	380.01
Negotiated contracts with undispatchable generators (L23/2014)*	0.02	0.05
Contracts concluded on Opcom centralized markets:	95.93	70.03
- contracts on CMBC-EA with generators	46.42	50.54
- contracts on CMBC-CN with generators	32.39	0.01
- contracts on CM-OTC with generators	0.64	3.69
- contracts on CMBC-EA with other suppliers	15.41	7.42
- contracts on CMBC-CN from suppliers	0.00	7.30
- contracts on CM-OTC from suppliers	1.07	1.06
Centralized market for universal service:	439.84	577.20
- contracts on CMUS with generators	270.00	442.86
- contracts on CMUS with suppliers	159.84	134.34
Transactions concluded on DAM:	65.30	12.47
- purchase	100.18	106.42
- sales	34.88	93.95

*negotiated trades concluded with undispatchable generators which may conclude contracts according to Law 23/2014 provisions, with subsequent changes and additions of Law no. 122/2015, both Laws subsequent to Law no. 220/2008

The structure of the electricity purchased by the suppliers of last resort from the main generators on regulated contracts is presented in the following graph for April 2016:

Electricity acquisition from main generators, on regulated contracts, of the suppliers of the last resort for delivering electricity to final consumers on regulated market
April 2016



Source: Monthly reports of the suppliers of last resort – processed by MG

The suppliers of last resort separately display in the bills of their customers the “Competitive Market Component” (CMC). This tariff component was proposed by each supplier of last resort and finally approved by ANRE. In accordance with the provisions of ANRE Order no. 83/2013 for approving the Methodology to set up prices and tariffs to the final customers who choose not to exercise their eligibility rights. Since July 01 2013, CMC is separately highlighted within the household invoice. In order to reduce the gap between acquisition prices of electricity bought for covering the consumption at CMC tariffs, ANRE approved in July 2014 the regulatory framework for the Centralised Market for Universal Service (CMUS). This centralised market, operated by OPCOM became operational in April 2015 by implementing the trading mechanism. Consequently, the acquisition process of the forecasted demand to be invoiced with CMC tariffs is made in a centralised manner on CMUS and the difference between invoiced and forecasted demand is to be covered from DAM. The demand of final customers who are delivered in last resort regime is to be covered from the centralised markets – CMBC-EA, CMBC-CN, CM-OTC, DAM and ID.

The following table presents the electricity acquisition structure of suppliers of last resort for US (before the delivery interval) for April 2016 compared to April 2015:

Acquisition structure of last resort suppliers for universal service	April 2015		April 2016	
	Quantity [GWh]	Average price [lei/MWh]	Quantity [GWh]	Average price [lei/MWh]
Contracts concluded on Opcom	0.02	156.00	-	
-on CMBC-EA with generators	0.00	0.00		
-on CMBC-CN with generators	0.02	156.00		
-on CM-OTC with generators	0.00	0.00		
-on CMBC-EA with other suppliers	0.00	0.00		
-on CM-OTC with other suppliers	0.00	0.00		
Contracts concluded on CMUS:	429.84	167.44	577.20	133.59
- contracts on CMUS with generators	270.00	167.43	442.86	133.85
- contracts on CMUS with suppliers	159.84	167.46	134.34	132.76
Transactions concluded on DAM:	22.24	150.93	-6.70	21.63
- purchase	40.50	136.37	47.32	147.54
- sales	18.02	118.21	54.02	131.92
TOTAL	159.84	164.77	624.52	134.65

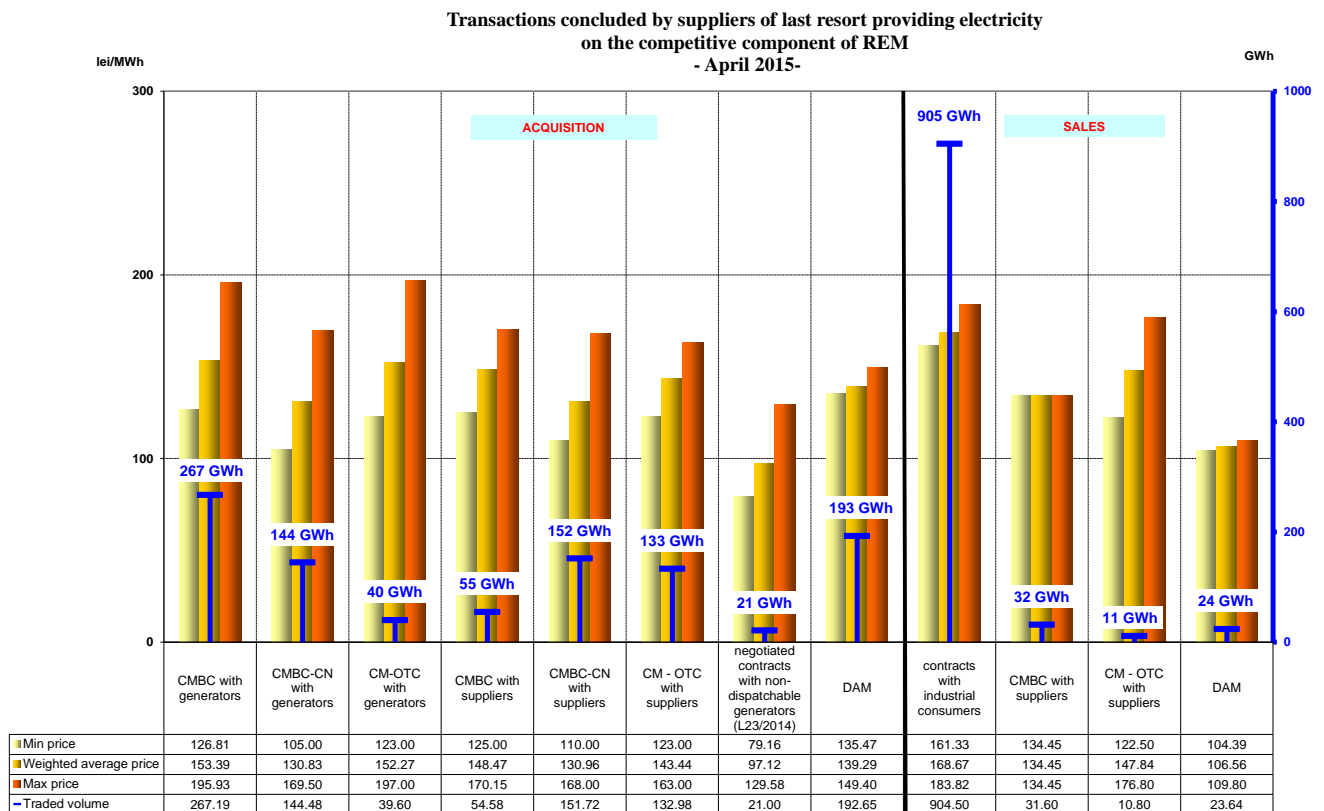
The following table presents the electricity acquisition structure of suppliers of last resort (before the delivery interval) corresponding to the competitive REM (energy supplied at negotiated prices to the customers who renounced to regulated tariffs) for April 2016 compared to April 2015:

- GWh -		
Transactions' structure of suppliers for the competitive segment of REM	June 2015	June 2016
Purchase		
Contracts concluded on Opcom centralized markets:	648.82	790.56
- on CMBC-EA with generators	426.41	267.19
- on CMBC-CN with generators	3.63	144.48
- on CM-OTC with generators	20.96	39.60
- on CMBC-EA with other suppliers	153.08	54.58
- on CMBC-CN with other suppliers	9.66	151.72
- on CM-OTC with other suppliers	35.09	132.98
Negotiated contracts with undispachable generators (others than L23/2014 and L122/2015)*	0.81	0.00
Negotiated contracts with undispachable generators (L23/2014 and L122/2015)**	0.00	21.00

DAM	286.69	192.65
Sales		
Contracts concluded on Opcom centralized markets:	102.77	42.40
- on CMBC-EA with other suppliers	80.93	31.60
- on CM-OTC with other suppliers	0.24	10.80
- on CMBC-EA with DO	21.60	0.00
DAM	2.98	23.64
Non-household customers	807.34	904.50

*negotiated trades concluded with undispachable generators which are not able to conclude contracts according to Law 23/2014 provisions, with subsequent changes and additions of Law no. 122/2015, both Laws subsequent to Law no. 220/2008

The structure by types of sources/destinations of the traded volumes combined with the actual average prices of the suppliers of last resort corresponding to the competitive segment of REM is presented in the following graph for April 2016:



Source: Monthly reports of the suppliers of last resort – processed by MG

Main distribution operators

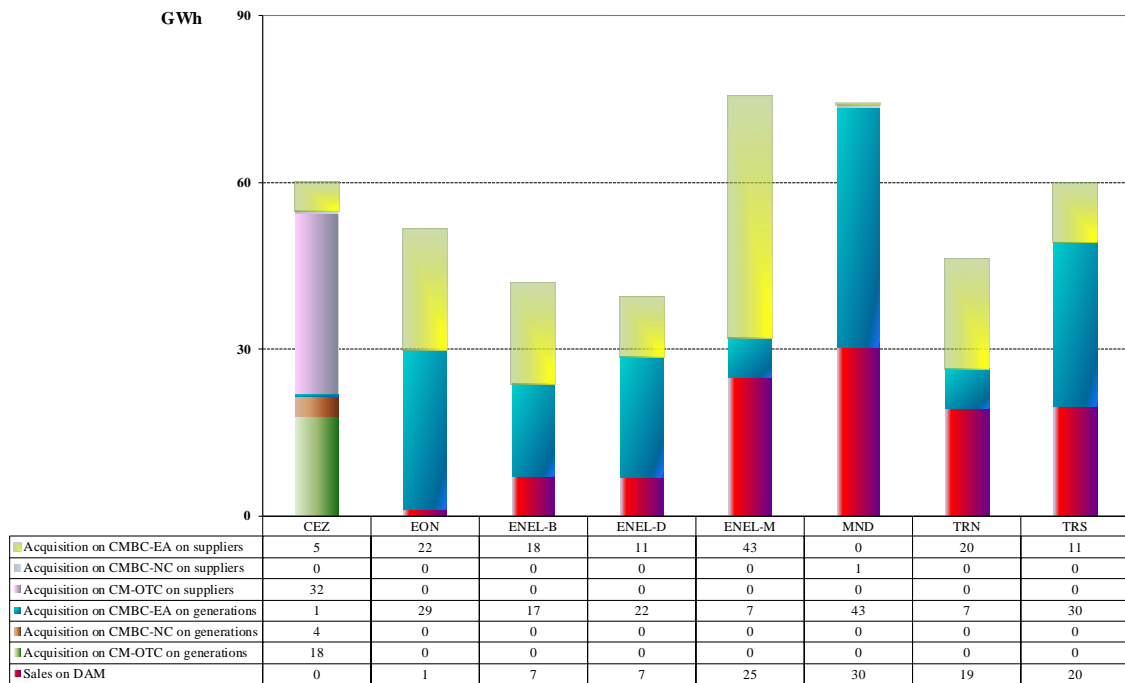
The following table shows the electricity acquisition structure of main distribution operators (before the delivery interval), for covering the distribution network losses, for April 2016 compared with April 2015:

- GWh -

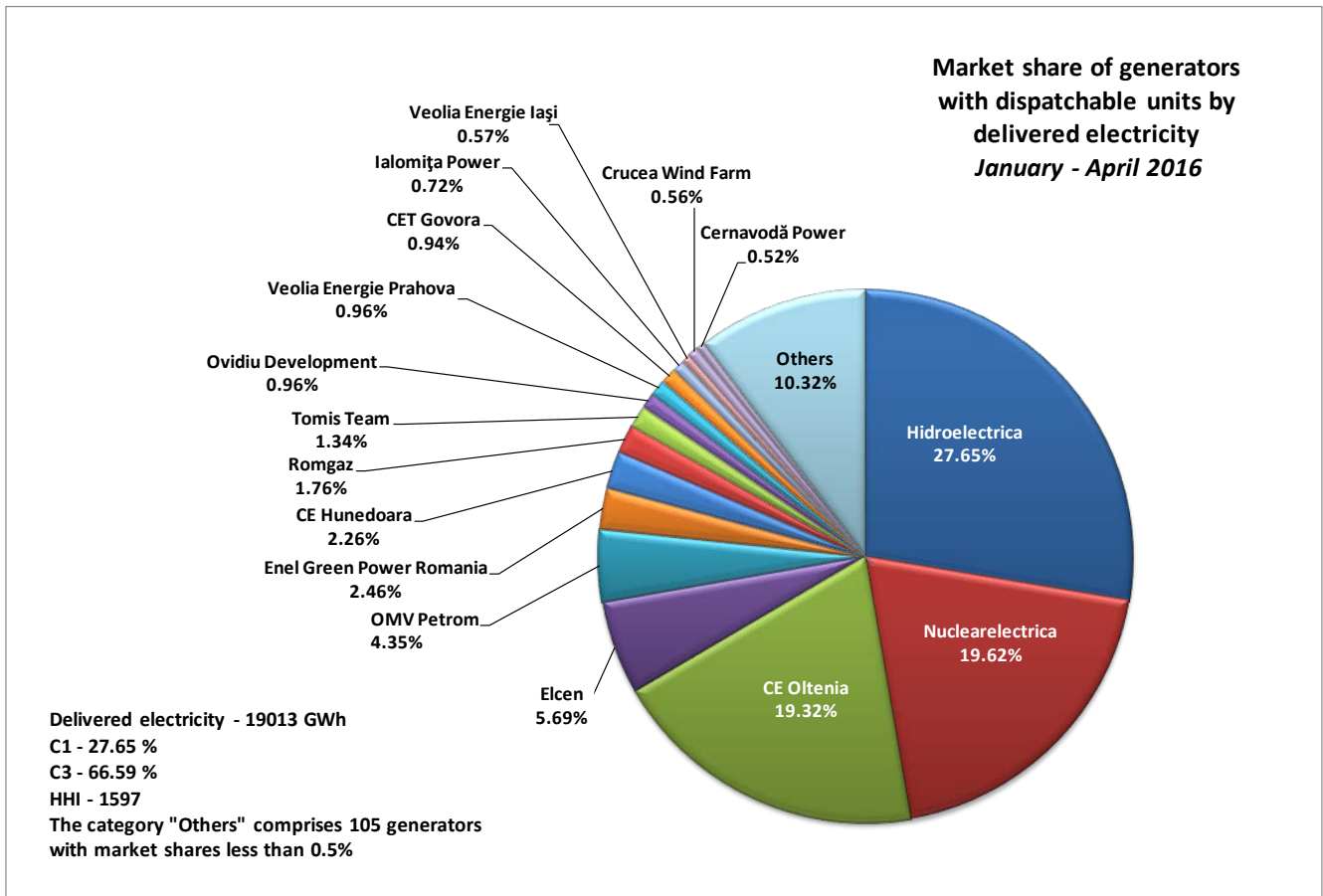
Acquisition structure	April 2015	April 2016
Contracts concluded on Opcom centralized markets:	300.42	339.29
- CMBC-EA with generators	100.80	154.62
- CMBC-CN with generators	8.04	3.60
- CM-OTC with generators	0.00	18.00
- CMBC-EA with other suppliers	172.74	129.77
- CMBC-CN with other suppliers	0.84	0.91
- CM-OTC with other suppliers	18.00	32.70
Transactions concluded on DAM:	185.49	101.29
- purchase	185.70	109.53
- sales	0.21	8.24

The electricity purchased for covering their network losses is presented in detail in the following graph, for April 2016:

Electricity acquisition of distribution operators for covering the distribution losses
- April 2016 -



Source: Monthly reports of the distribution operators – processed by MG



Source: Monthly reports of generators – processed by MG

A component of the WEM on which direct competition between generators exists is the Balancing Market (BM). The values of concentration indicators on this market are determined based on effectively delivered electricity, for each type of regulation defined within the Commercial Code, and they are presented in the following table for April 2016:

Structure/concentration indicators of BM - April 2016 -	Regulation					
	Secondary		Fast tertiary		Slow tertiary	
	upward	downward	upward	downward	upward	downward
C1 - % -	62	63	60	91	82	42
C3 - % -	97	96	88	100	99	98
HHI	4666	4677	4161	8277	6845	3709

Source: Monthly reports of CN Tranelectrica SA – processed by MG

In order to maintain the level of security in the NES functioning, due to significant increase of the number of RES generators, Ancillary Services are ensured both on market mechanisms and regulated contracts. Based on *GD no. 941/2014 provisions for modifying art. no. 4 of GD no. 138/2013 regarding approving some measures for electricity supplying security and for extension of a term*, they were established regulated quantities for secondary, fast tertiary and slow tertiary reserves.

Besides that, in April 2016 CNTEE Tranelectrica SA has organised auctions for acquiring reserves on the competitive component for secondary reserve, fast tertiary and slow tertiary reserve.

The relationship between regulated and competitive components on the Ancillary Services Market (ASM) as well as the main concentration indicators on each type of reserve (secondary, fast tertiary and slow tertiary) are presented in the following table, for April 2016.

Concentration indicators on ASM - April 2016 -		Secondary reserve	Fast tertiary reserve	Slow tertiary reserve
regulated component	contracted quantity (h*MW)	14400	14400	331200
	C1 (%)	93.2	100.0	100.0
	C3 (%)	100.0	100.0	100.0
competitive component	contracted quantity (h*MW)	303600	480450	172800
	C1 (%)	65.1	86.6	83.3
	C3 (%)	96.7	95.9	100.0
	HHI	4893	7564	10000

Source: Monthly reports of CN Transelectrica SA – processed by MG

Concentration Indexes for the Day Ahead Market

Day Ahead Market (DAM) is a voluntary market, opened both for buying and selling for all types of market participants: generators, suppliers, grid operators, under applicable regulations.

The concentration indicators on DAM reflects the level of competition between sellers and between buyers respectively, the dynamics of both influencing the price level. The following table presents C1, C3 and HHI for buying and for selling side of DAM based on quantities traded by participants on this market.

Concentration indicators on DAM - April 2016 -	C1 (%)	C3 (%)	HHI
Selling	28.91	51.45	1226
Buying	19.04	33.00	581

Source: Monthly reports of Opcom SA – processed by MG

7. Price evolution on wholesale electricity market

Starting 19.11.2014 the Romanian DAM is working coupled with the spot markets from Hungary, Slovakia and Czech Republic based on the price coupling mechanism, project known as 4M MC. This coordinated correlation mechanism uses an unique European method for price coupling of regions (called *Price Coupling of Regions - PCR*-initiative) in order to fulfil the harmonization of national european markets and create the internal european electricity market.

The functioning of these spot markets is based on coupling algorithm recommended by ACER (Euphemia) and its goal is maximizing the social welfare to the entire area of the coupled markets.

The coupling mechanism is accomplished through the operators OTE-Czech Republic and EPEX Spot (both of them, stock members of PCR initiative), the last one operating as services supplier for OKTE-Slovakia, HUPX-Hungary (neither of these exchanges are PCR members) and Opcom-Romania (who became PCR member at the beginning of 2016). Coupling operators are acting as Coordinators on a monthly rotation basis.

According to EU legislation, coordinated cross border capacity allocation is under the governance of the transmission system operators from the 4 countries and the allocation model to be used is the default allocation on DAM of the available interconnection capacity.

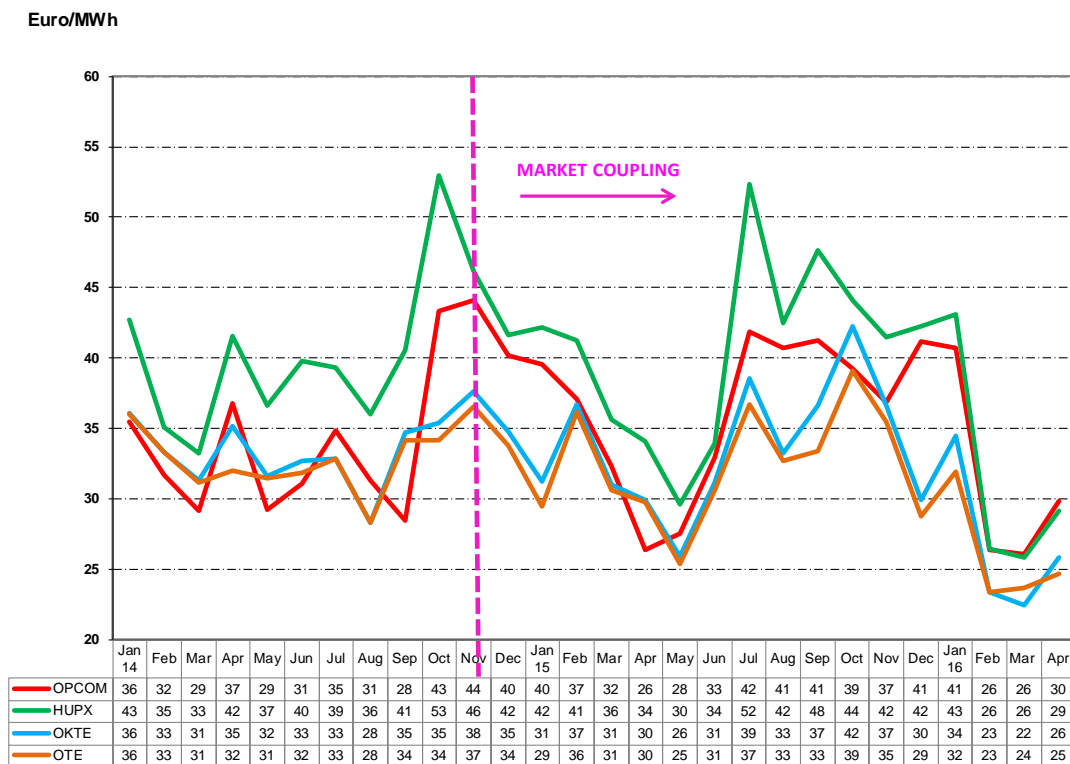
To better meet the purpose of DAM coupling mechanism - electricity transfer at level and direction based on generation and consumption conditions and dependent on the coupled DAM prices - starting with 1st January 2016, TSO operators from Romania and Hungary (CNTEE Transelectrica SA and Mavir ZRt) agreed to reserve a quota from interconnection capacity for DAM allocation based on the authorities recommendations from both countries, ANRE and MEKH. The same rule was adopted for interconnection capacity allocation on Bulgarian border.

Thus, for each month of the year, reserved capacity for DAM allocation is determined as a difference between monthly ATC for each subperiod and 80% from the lowest value between the ATC resulted for subperiods of the month, incremented with the already allocated capacity at the yearly auction but which has been returned to TSO.

Particularly, for Hungarian border, if 80% from the lowest value of the ATC resulted for monthly subperiods is lower than 80 MW, ATC for monthly allocation will be 80% from the ATC calculated for each subperiod incremented with the already allocated capacity at the yearly auction but which has been returned to TSO.

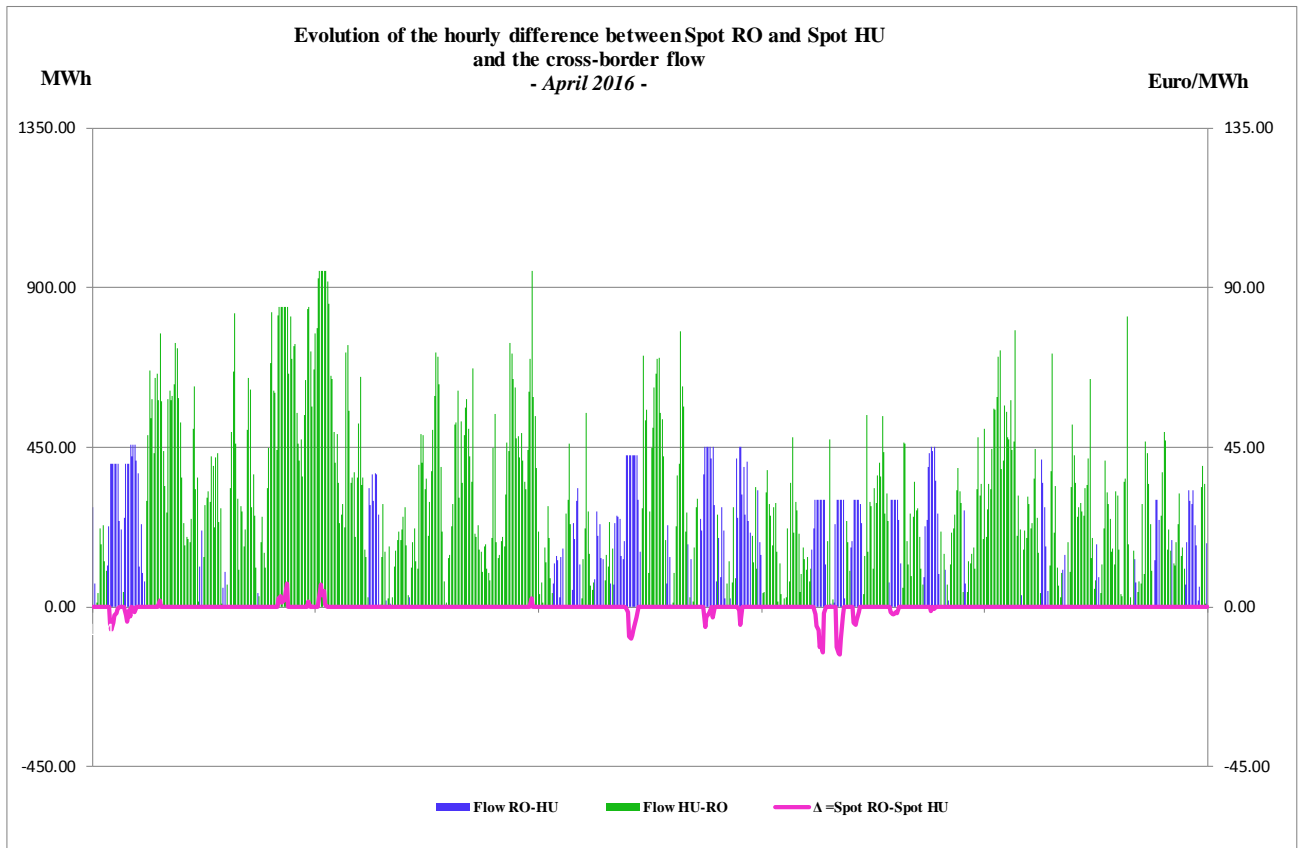
Next graph presents the monthly spot prices of the 4 markets involved in the coupling mechanism starting with January 2014, before and after the start of operational phase.

Monthly spot prices on the 4 markets functioning in market coupling framework
January 2014 - April 2016



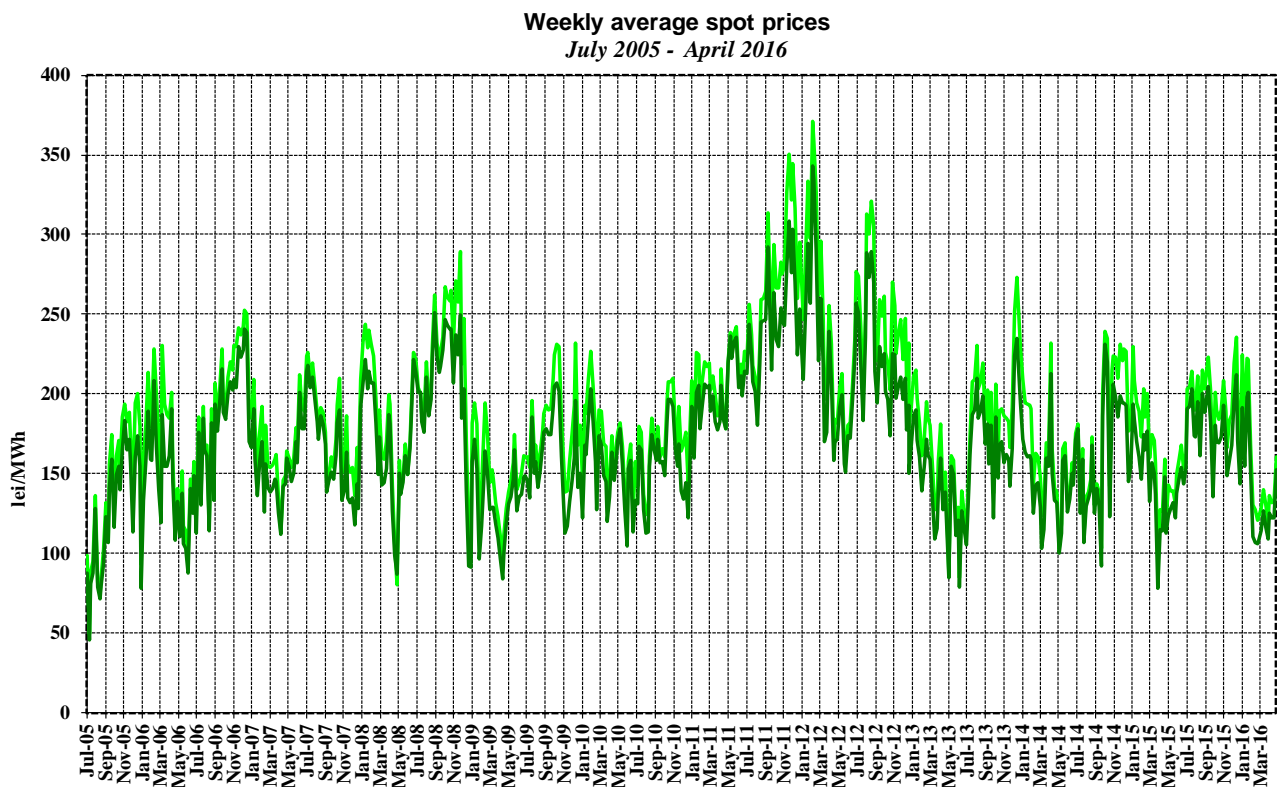
Source: Monthly reports of Opcom SA – processed by MG

The following graph presents the evolution of April 2016 hourly gap between DAM prices in Romania and Hungary as a result of the functioning of coupled markets, correlated with the cross border flows RO-HU for both directions.



Source: Data published by Opcom SA – processed by MG

The following graph presents the evolution of weekly average spot prices starting with July 2005:



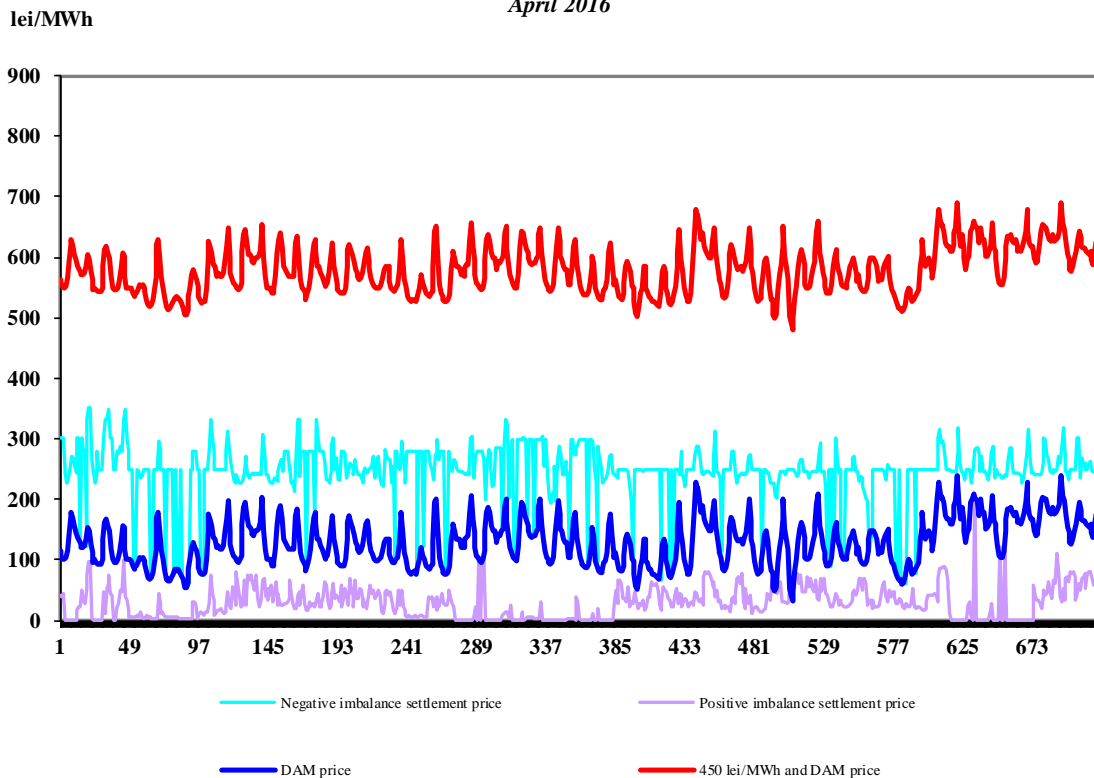
Source: Daily reports of Opcom SA – processed by MG

In order to cover the differences between planned/contracted amounts of consumption/ generation and the real time consumption, the system operator (CNTEE Transelectrica SA) operates the BM by buying or "selling" electricity at prices determined by the merit order of dispatchable generators' offers. The participants generating imbalances, grouped in BRPs, have to bear the imbalances costs. For the negative imbalances, they have to pay the settlement price resulting from the upward bids accepted on the BM, while for the positive imbalances they receive the settlement price resulting from the downward bids accepted on the BM.

The settlement prices (MCP on DAM, negative imbalance settlement price and positive imbalance settlement price) are represented on the same graph, showing the two markets correlation degree. In the first graph the prices are expressed in hourly values, in the second graph in hourly average values compared to internal consumption, and in the last graph in average monthly values.

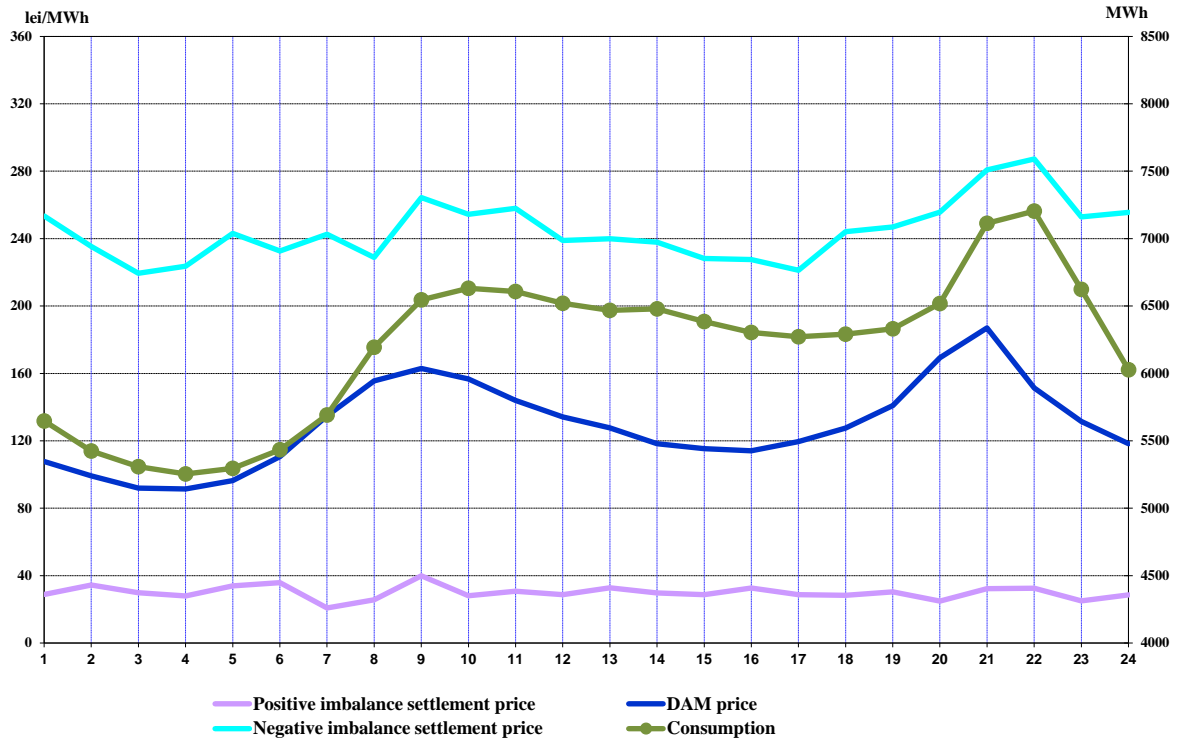
Hourly settlement prices

April 2016



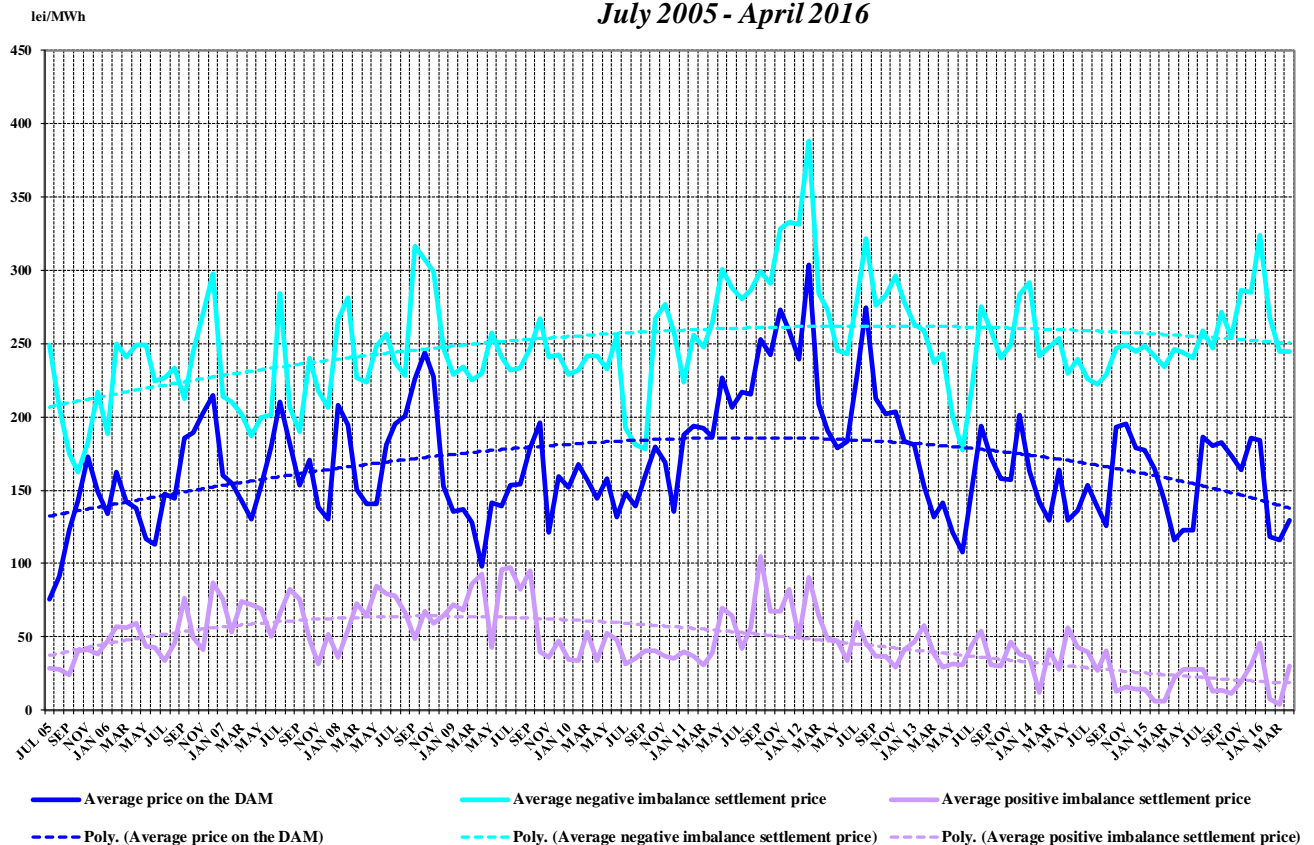
Source: Daily/monthly reports of Opcom SA – processed by MG

Hourly average settlement prices and internal consumption
April 2016



Source: Monthly reports of Opcom SA and CN Transelectrica SA – processed by MG

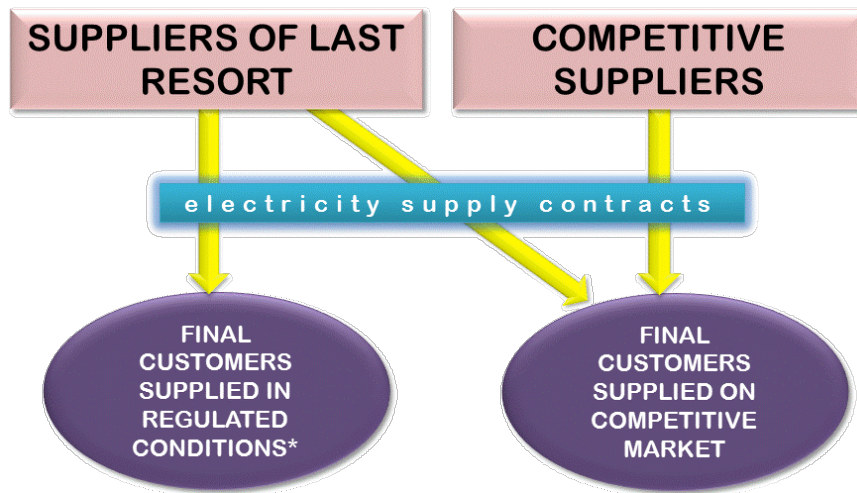
Monthly average prices on DAM and BM
July 2005 - April 2016



Source: Monthly/daily reports of Opcom SA – processed by MG

III. RETAIL ELECTRICITY MARKET

1. Structure of the retail electricity market

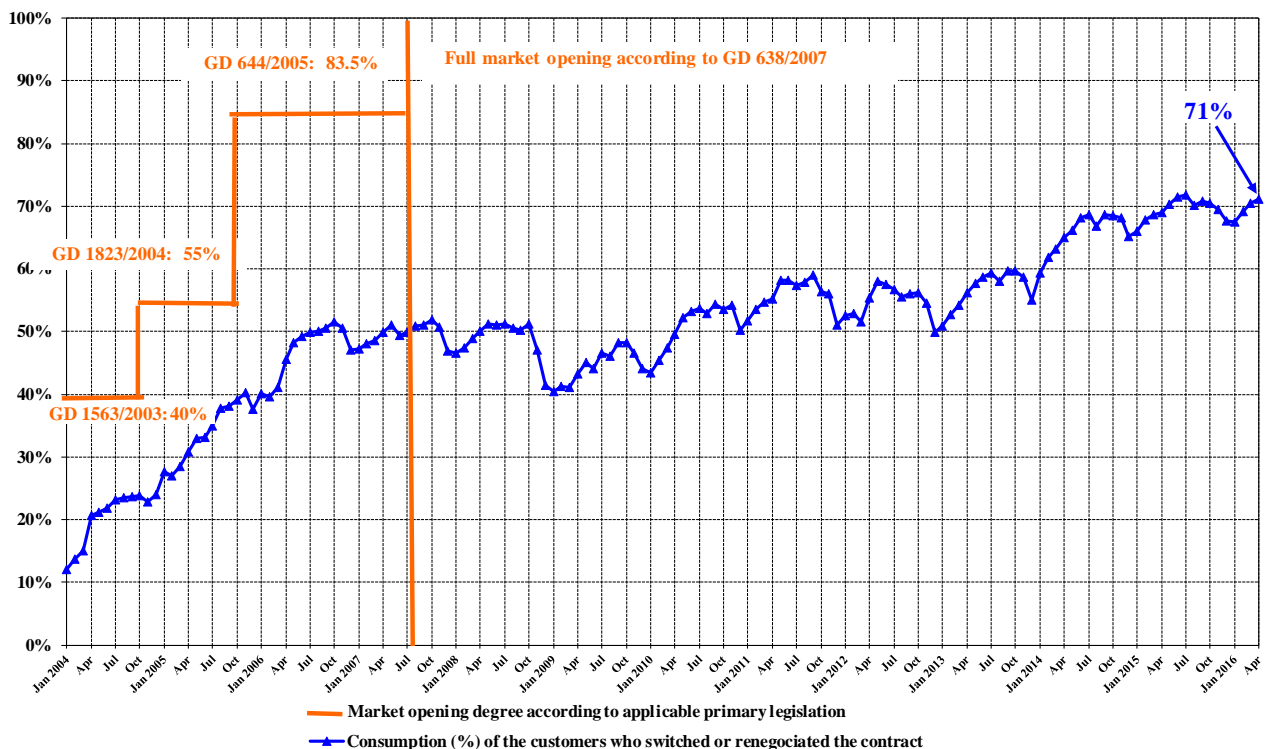


* according to art. 53 (2) and art. 55 (1) from Electricity and Gas Law no. 123/2012

2. Electricity market opening degree

The following graph contains the quota of the consumption from total consumption, of the customers who switched their supplier or renegotiated their contracts with the suppliers operating on the regulated market, between January 2004 – April 2016. The values presented are cumulated from the beginning of the opening process and are presented monthly:

Opening degree evolution of electricity market
January 2004 - April 2016

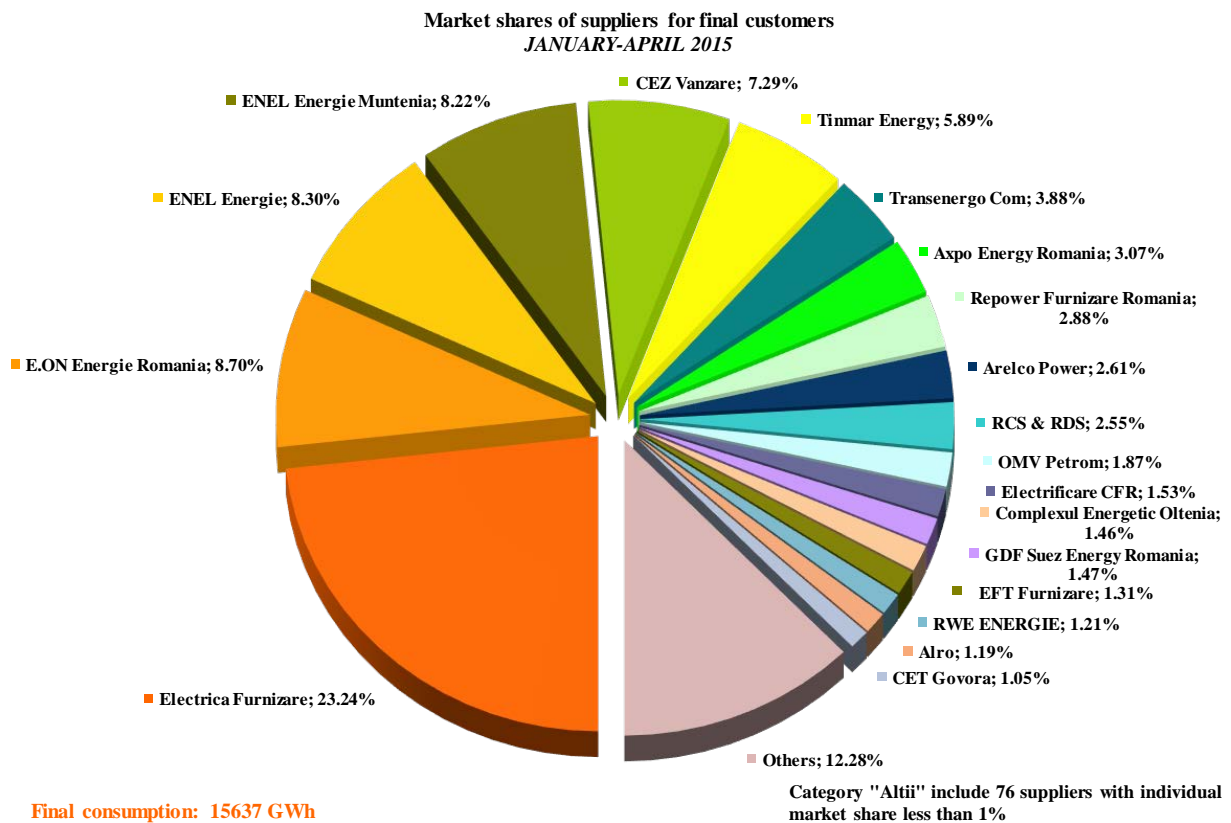


Source: Monthly reports of the final customers' suppliers – processed by MG

3. Market shares of the electricity suppliers

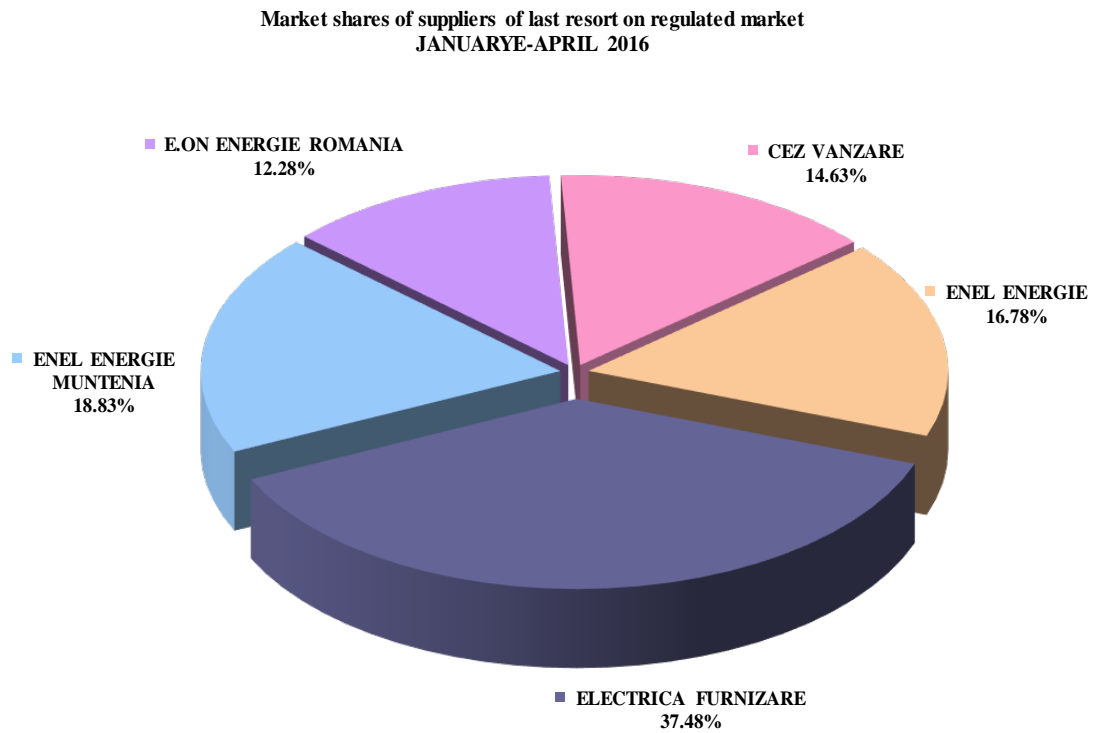
In the following three graphs there are presented the market shares of electricity suppliers on the retail market, calculated:

- a) for all suppliers acting on REM, including the suppliers of last resort, based on the electricity supplied to the final customers (on regulated, Competitive Market Component and last resort tariffs) in US and last resort regime, as well as to the customers who switched their supplier or renegotiated their contract;



Source: Monthly reports of suppliers for final customers – processed by MG

- b) for suppliers of last resort - based on the electricity supplied to the final customers in US and last resort regime;

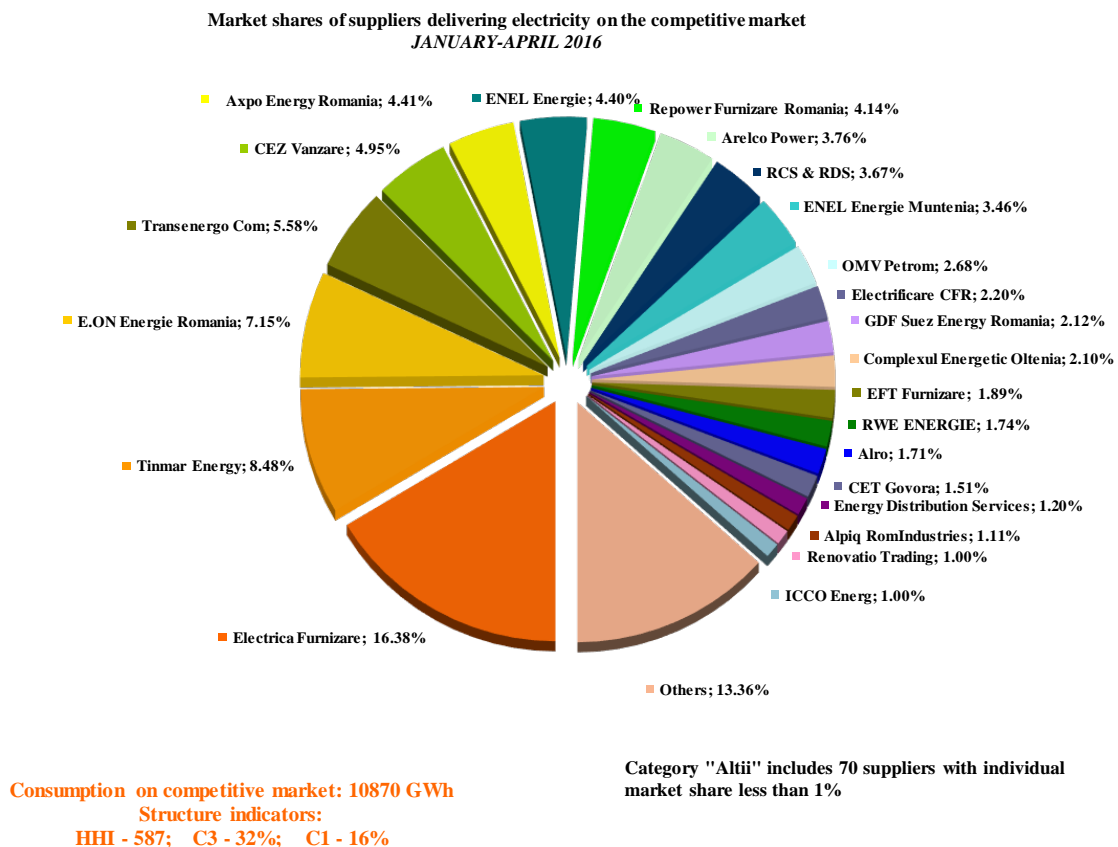


Consumption of customers supplied at regulated tariffs and CMC: 4767 GWh

Source: Monthly reports of the suppliers of last resort – processed by MG

and

- c) for all suppliers (including the suppliers of last resort) based on the electricity supplied for the customers at negotiated prices on competitive component of REM:



Source: Monthly reports of the competitive suppliers– processed b MG

The values of market indicators were calculated without taking into consideration the dominance principle. The delivered electricity used for determining the market share of each supplier comprises the self-consumption of the largest industrial customer which owns a supply license and based on it acquired its electricity from the WEM as a competitive supplier.

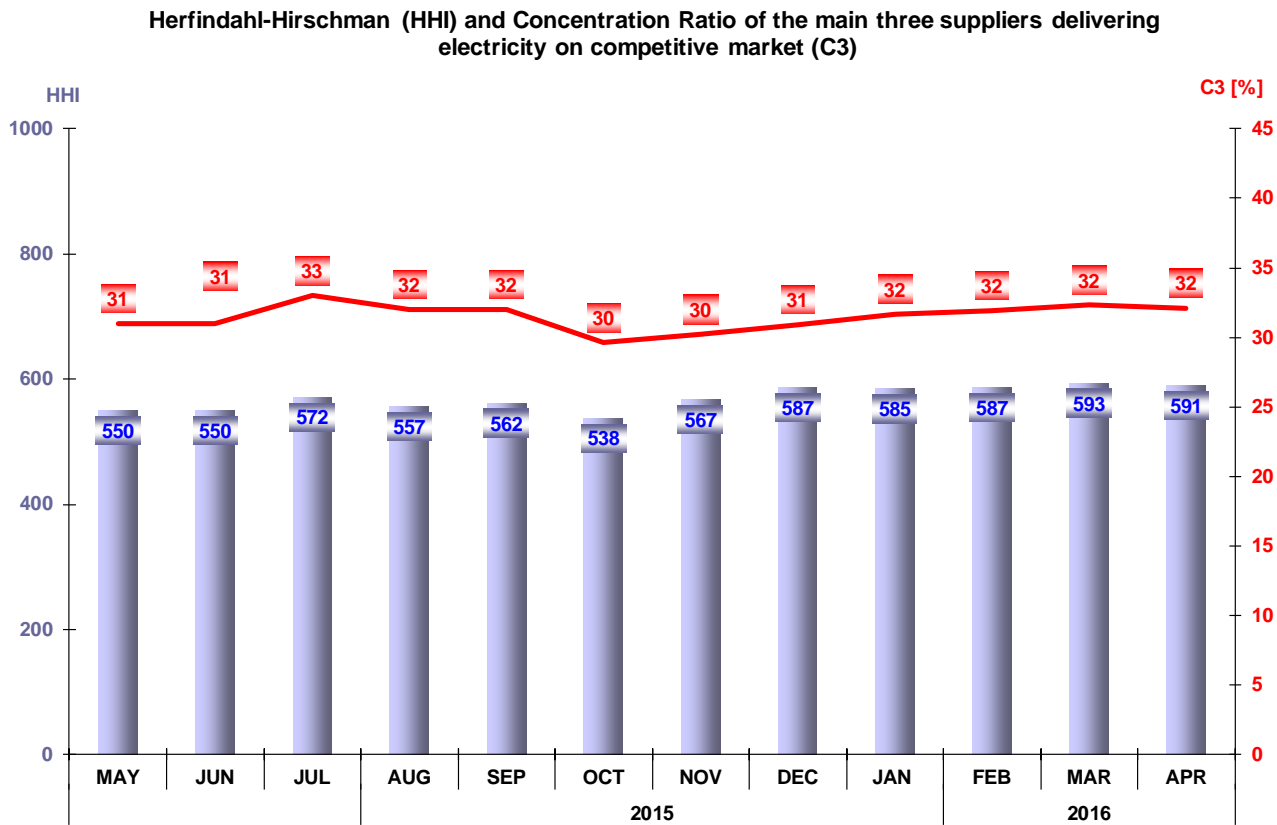
The electricity supplied to the final customers used for calculating the market share of every supplier includes also the self-consumption of that particular supplier (e.g. customers with supply license who buy electricity for themselves from WEM as competitive suppliers).

The analysis of the competitive suppliers' activity on the competitive REM component compared to their activity on the WEM is developed based on the weight of the electricity sold to final customers in total electricity sales. The table below presents the number of suppliers acting on the REM, grouped into categories of sales weight during April 2015:

Number of suppliers	Share of sales to final customers from total sales transactions			
	100%	75% - 100%	50% - 75%	<50%
Competitive	8	27	7	30
Of last resort	1	3	1	0

4. Concentration indicators of the competitive retail electricity market

The monthly evolution of concentration indicators (C3, HHI) determined on the competitive component of the REM is presented for May 2015 – April 2016 in the following graph:



Source: Monthly reports of the suppliers – processed by MG

The table below shows the values of structure indicators of competitive component of REM for and the number of active suppliers in April 2016, calculated for each customer category as defined by the Directive 2008/92/EC of the European Parliament and of the Council:

Indicators - Apr 2016	Consumer category							Total REM
	IA	IB	IC	ID	IE	IF	Other	
C1 - % -	26	27	21	15	16	15	16	16
C3 - % -	57	52	39	33	38	43	45	32
HHI	1490	1237	815	606	754	949	990	591
Consumption - GWh -	74.0	310	270	630	389	163	781	2618
No. of SUPPLIERS	68	83	74	68	32	16	18	96
No. of suppliers of last resort	5	5	5	5	4	3	3	5
No. of competitive suppliers	50	65	57	55	25	11	10	72
No. of producers	13	13	12	8	3	2	5	19

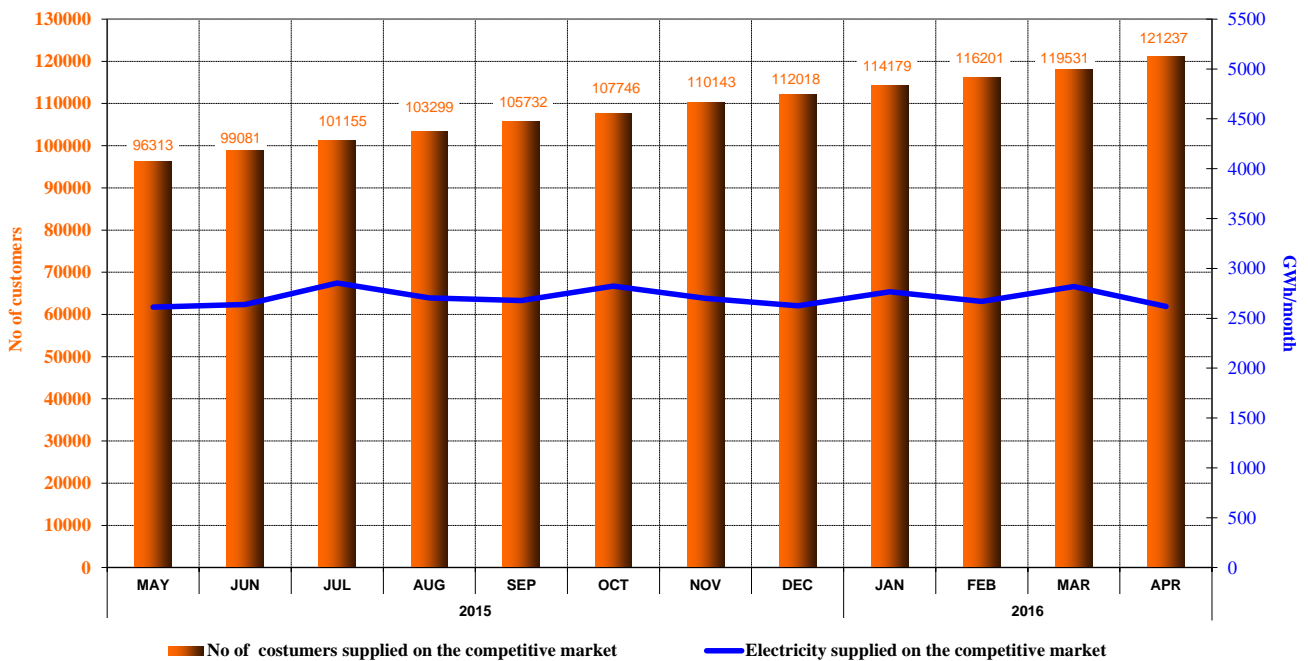
Source: Monthly reports of the suppliers – processed by MG

5. Evolution of customers' number and of electricity delivered

Number of customers supplied on the competitive market is presented as total value from the beginning of the market opening proces, split into categories according to Directive 2008/92/EC of the European Parliament and of the Council provisions. The table below presents the bands of consumption of each category of customers:

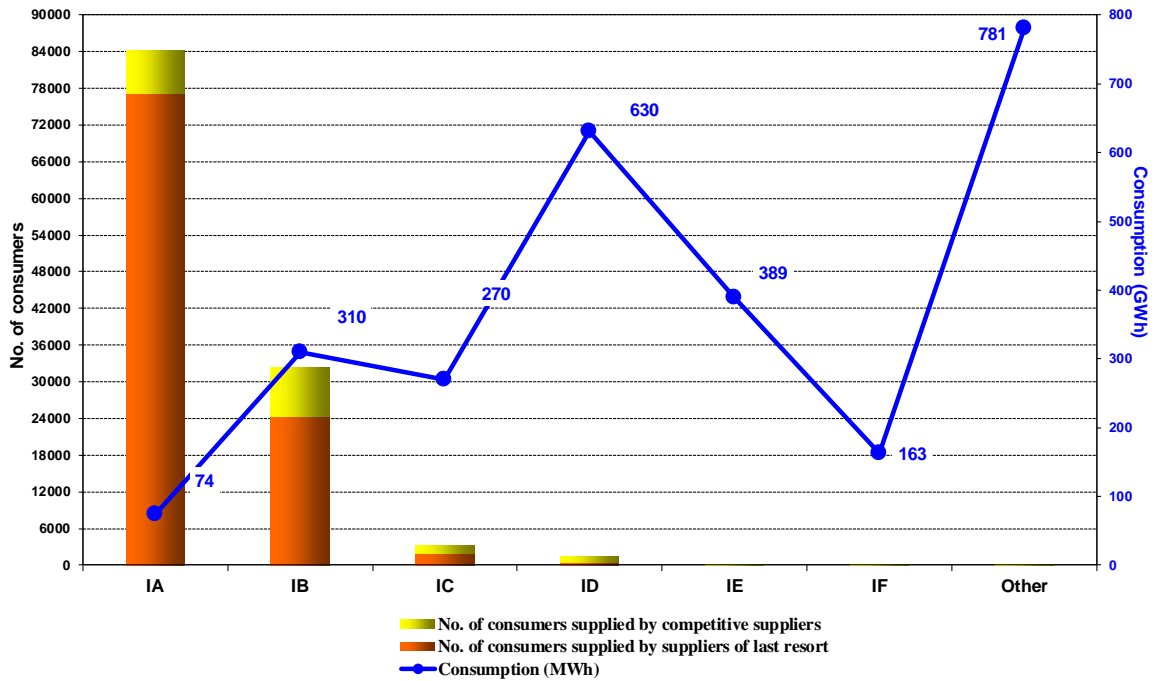
Non-household customers	Annual electricity consumption (MWh) between:	
IA		<20
IB	20	<500
IC	500	<2000
ID	2000	<20000
IE	20000	<70000
IF	70000	<=150000
Others	>150000	

Evolution of the number of supplied customers and delivered electricity on the competitive market



Source: Monthly reports of the competitive suppliers – processed by MG

Number of consumers supplied on competitive market and the consumption of each category of consumers
- APRIL 2016 -

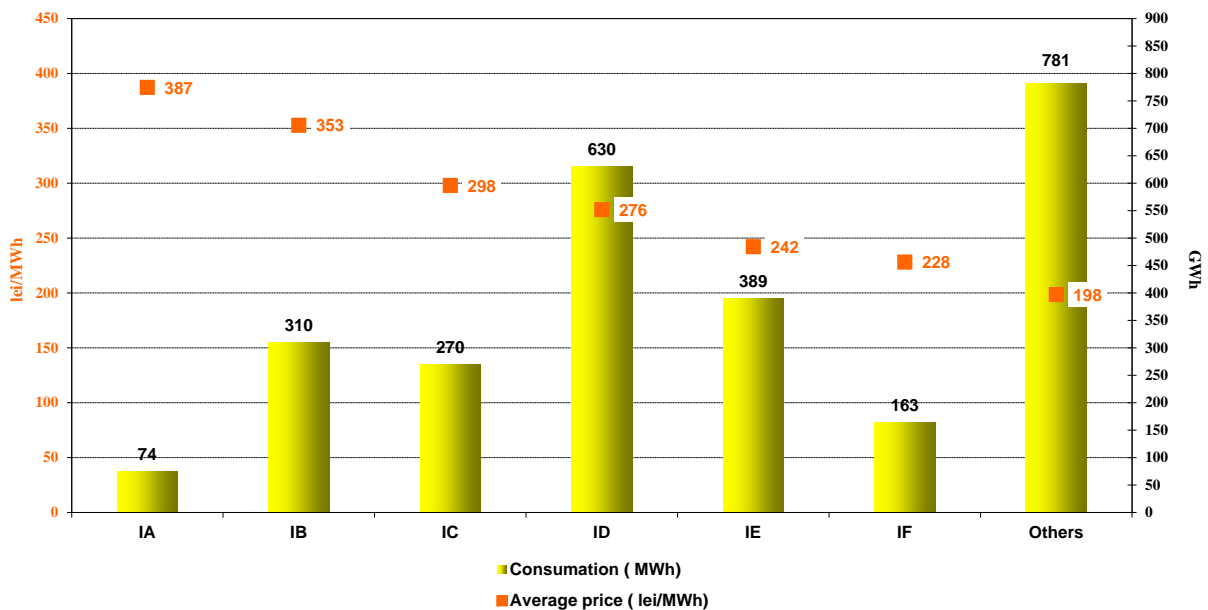


Source: Monthly reports of the suppliers – processed by MG

6. Average selling prices of customers supplied on the competitive market

The following graph presents the average selling prices of customers supplied on the competitive market, based on the structure defined according to the Directive 2008/92/EC of the European Parliament and of the Council for April 2016.

Average price and energy consumption on types of consumers applied on competitive market
- APRIL 2016 -



Source: Monthly reports of the competitive suppliers – processed by MG

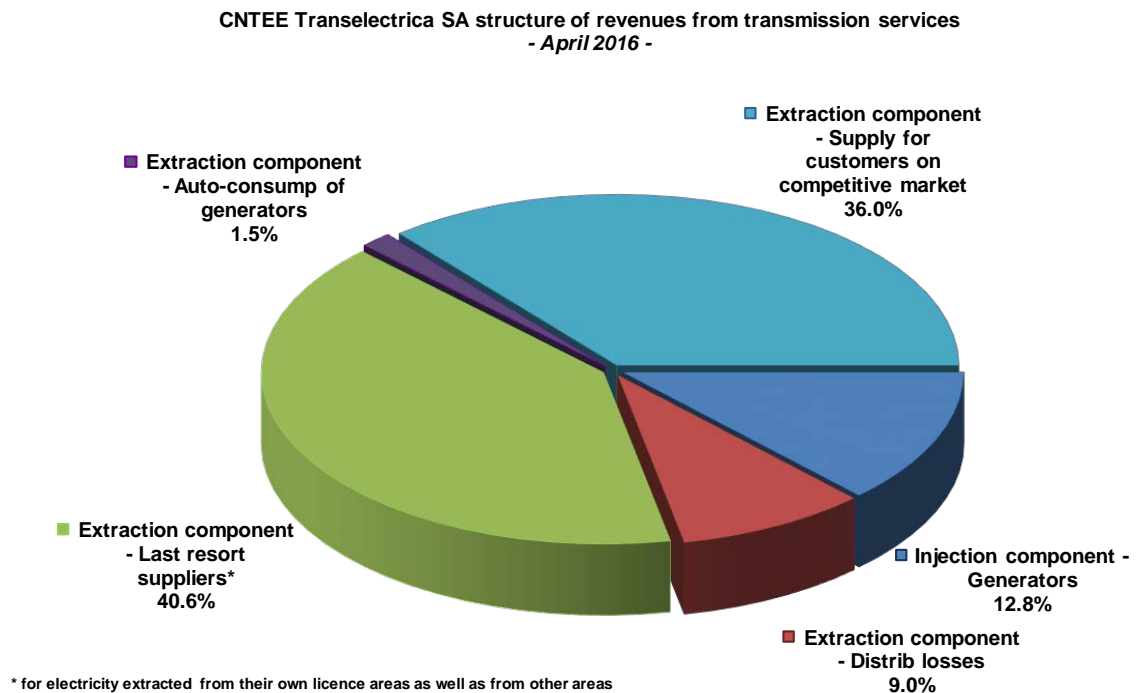
Note: The average selling price on each category was calculated as weighted average of prices applied by suppliers with quantities supplied according to the provisions of the European Directive. The average prices do not include VAT, excise or other taxes but include the corresponding services (transmission, system services, distribution tariffs, imbalance, BRP aggregated tax, metering). Splitting customers into categories was based on their annual consumption forecast, according to the provisions of above mentioned Directive.

IV. TRANSMISSION AND SYSTEM OPERATOR CNTEE TRANSELECTRICA S.A.

CNTEE Transelectrica SA performs the electricity transmission service at regulated regional and average tariffs, depending on the impact of introduction or extraction of electricity in/from transmission grid in NES functioning regime. Setting the regional transmission tariffs for both components, injection and extraction, aims locational transmission signals to determine an optimum geographic positioning of the new power units, respective an equilibrate positioning into the territory of the new customers.

Methodological principles for establishing the transmission service tariffs, was modified starting with 1st of July 2015, in an attempt to comply with EU regulations and ACER recommendations.

The following graph presents the structure of CNTEE Transelectrica SA revenues from performing the transmission services and reflects the structure of its clients benefiting from this type of service in April 2016.

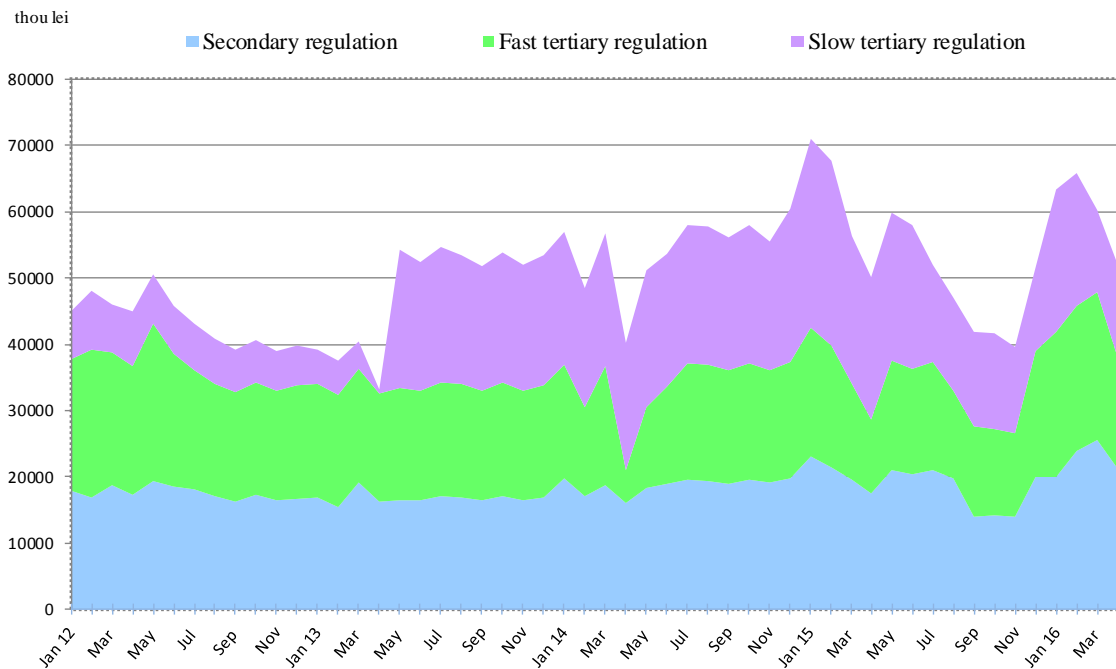


Source: Monthly reports of CN Transelectrica SA – processed by MG

In order to perform the system operator tasks, CNTEE Transelectrica SA assesses and contracts reserves (ancillary services) from qualified generators, which are integrated on BM. The ancillary services which may be used are reserves for secondary, fast tertiary, slow tertiary regulation and reactive energy.

The following graph represents the cost evolution of ancillary services acquisition which were paid by the transmission and system operator starting with January 2012. The tariffs applied for this type of services may be regulated (for the quantities approved through decision by ANRE) and/or competitive (in case the TSO organizes competitive sessions).

Structure of CNTEE Tranelectrica costs with ancillary services acquired from qualified generators starting with January 2012



Source: Monthly reports of CN Tranelectrica SA – processed by MG

V. EVOLUTION OF MARKET RULES IN APRIL 2016

In April 2016, ANRE issued the following regulations with impact on the wholesale and retail electricity markets:

- ANRE Order no. 16/2016 for approving the modification of Methodology for establishing the annual compulsory quota for electricity generated from RES benefitting from the promotion system for green certificates, approved by ANRE Order no. 101/2015;
- ANRE Order no. 17/2016 for approving the modification of Regulation for organising and functioning of green certificates market, approved by ANRE Order no. 60/2015;
- ANRE Order no. 18/2016 for approving the modification of limit values of green certificates trading and the value of an unpurchased green certificate;
- ANRE Decision no. 627/2016 on approving the quantities produced in highly efficient cogeneration units which benefit of bonus scheme in March 2016;

VI. EXPLANATIONS AND ABBREVIATION

1. Explanations

- *Electricity delivered into the grid* includes also the own consumption of auto-generators such as RAAN and OMV Petrom together with the electricity sold by the generators through direct lines or consumed by themselves at other consumption sites.

- *Self-consumption of generators* – in the graph regarding the revenues of CN Transelectrica SA the self-consumption exclusively represents the generators consumption at consumption places other than the generation sites.
- *Internal consumption* represents the electricity covered by the wholesale market participants and calculated as *Delivered electricity + Import – Export*.
- *Consumption of final customers on regulated market* represents the consumption of customers supplied at regulated tariffs and CMC by suppliers of last resort.
- *Consumption of final customers on competitive market* represents the consumption of customers supplied at negotiated prices.
- *Fuel consumption* represents the fuel consumed for generating electricity and heat.
- *Competitive supplier* represents the supplier which is active on the competitive retail market.

2. Abbreviation

- MG – Monitoring Group
- WEM – Wholesale Electricity Market
- REM – Retail Electricity Market
- CMBC – Centralised Market of Bilateral Contracts
- CMC – Competitive Market Component
- DAM – Day Ahead Market
- ID – Intraday Market
- BM – Balancing Market
- MCP – Market Clearing Price
- PCSU – Centralised Market of Universal Service (Romanian abbreviation)
- 4M MC – Price coupling mechanism for spot markets from Romania, Hungary, Slovakia and Czech Republic
- BRP – Balancing Responsible Party
- TG/TL – injection / extraction component of the transmission tariff
- OU-NPD – Operational Unit-National Power Dispatch
- US – Universal Service
- ATC – Available Transmission Capacity